

**\*\* COMPLETE THIS FORM TO INITIATE SUPPLIER SCOUTING \*\***

**MEPNN Supplier Scouting Opportunity Synopsis**

*(To view in larger text, press Ctrl + Simultaneously)*

The submitting entity agrees to notify NIST MEP of the status of actions taken as a result of this scouting instance within 30 days after receiving a results report. I agree

Number of days to be posted if other than 30

Item to be Scouted Aluminum tubing

Please describe the item application/the end use of the item Aluminum tubing for pneumatic air gun extensions.

Supplier Customer/Product NAICS Code, if known

**TECHNICAL INFORMATION**

**1. Supplier Information**

1a. Type of supplier being sought Other

If other, please specify type of supplier Any source is acceptable. MFR, distributor, anyone with surplus material.

1b. Reason for scouting submission Other

If other, please specify reason Experiencing exceptionally long delivery times.

**2. Summary of Technical Specifications and Performance Requirements**

2a. Describe the manufacturing process Aluminum extrusion and anodizing.

2b. Provide dimensions, size, tolerances, and performance specifications for the item 0.75" OD, 0.083" wall thickness, variable length(s) some flexibility on wall thickness. Minimum acceptable ID is 0.56"

2c. List required materials needed to make the product, including materials of product components 6064-T6 aluminum, or similar

2d. Are there applicable certification requirements? No

If yes, please explain applicable certification requirements N/A

2e. Are there applicable regulations? No

If yes, please explain applicable regulations N/A

2f. Are there any other standards, requirements, etc.? No

If yes, please explain other standards, requirements, etc. N/A

2g. Additional Comments

**BUSINESS INFORMATION**

**3. Volume and Pricing**

3a. Estimated potential business volume (i.e. # Units per day/month/year) Annual purchase qty is 500,000 linear feet, usually ~100k feet at a time

3b. Estimated target price/unit cost information (flexible and negotiable not accepted) \$2-3 per foot. Company will entertain any offer with reasonable delivery times.

**4. Delivery Requirements**

4a. When is it needed by? (immediate, 30 days, 6 months, etc.) Immediate

4b. Describe packaging requirements (i.e. individually/group packaging) Palletized or boxed andlt's also anodized and wrapped in paper to protect the finish in shipment .

4c. Where will this item be shipped? Chicopee, MA

**5. Additional Comments**

Supplier Scouting Number (NIST MEP use only)

2022-029

Created at 3/9/2022 9:16 AM by  Richard Sullivan  
Last modified at 3/14/2022 4:25 PM by  Andrew C. Peterson

CLOSE

---

### MEP Connect

- [Home](#)
- [MEIS](#)
- [National Calendar](#)
- [Contact MEP](#)
- [Ask the Network](#)

### Resources

- [Privacy Policy / Security](#)
- [Notice / Accessibility Statement](#)
- [Disclaimer](#)
- [FOIA](#)
- [Information Quality](#)

### Follow Us

### General Information

The **Manufacturing Extension Partnership (MEP)** connects the MEP National Network and is a program within the **National Institute of Standards and Technology (NIST)**.  
For assistance using MEP Connect, please contact the **webmaster**.  
NIST is an agency of the **U.S.Commerce Department**  
For information on other federal programs, see **USA.gov**

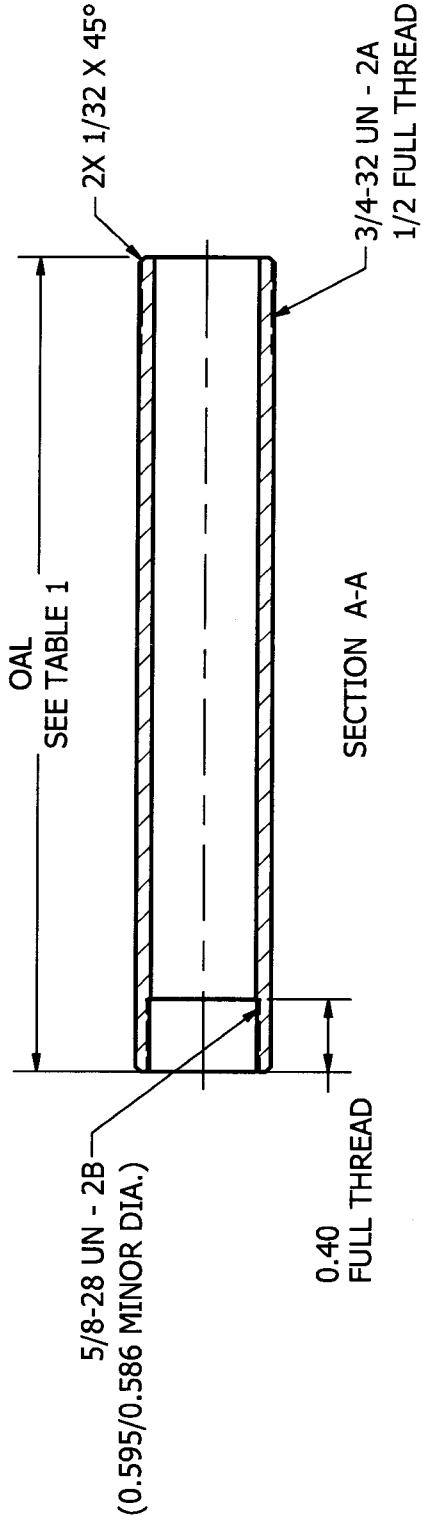
---

1  
 2  
 1  
 2  
 1  
 2

REV	DESCRIPTION	DATE	ECN
H	CHANGED OD TOLERANCE FROM ±0.005 TO ±0.007	7/21/2015	0717

**TABLE 1: EXTENSIONS**

EXTENSION	OAL
4	2 1/2
6	4 1/2
12	10 1/2
18	16 1/2
24	22 1/2
30	28 1/2
36	34 1/2
48	46 1/2
60	58 1/2
72	70 1/2



- NOTES:**
1. MATERIAL: 0.750±0.007 OD X 0.083±0.005 WALL TUBE, 6063-T6 ALUMINUM  $\triangle H$
  2. PERMODIZE® PATTERN PER SHOP ORDER

THESE DRAWINGS AND SPECIFICATIONS ARE THE PROPERTY OF GUARDAIR CORPORATION AND SHALL NOT BE REPRODUCED OR COPIED OR USED AS THE BASIS FOR THE MANUFACTURE OR SALE OF APPARATUS WITHOUT PERMISSION  INTERPRET DRAWING IN ACCORDANCE WITH ANSI Y14.5M  THIRD ANGLE PROJECTION	UNLESS OTHERWISE SPECIFIED DIMENSIONS ARE IN INCHES  TOLERANCE ON DECIMALS 0.00 ± 0.015 FRACTIONS ± 1/32 ANGLES ± 1°  CONCENTRICITY 0.005 TIR ALL MACHINED SURFACES 63 RMS MAX REMOVE BURRS & SHARP EDGES	DATE DRAWN 12/28/2000 DRAWN BY MWY REVISED BY VWP ENG CHECK MWY MFG CHECK CJC QA CHECK KAP NDW NO	<b>GUARDAIR CORPORATION</b>  EXTENSION TUBE	
	SCALE	1" = 1"	SIZE	A
	DRAWING NO	75EA	REV	H
	DO NOT SCALE THIS DRAWING		SHEET	1 OF 1