

## Supplier Scouting Opportunity Synopsis 2023-043

**Item to be scouted:** PVC Tube

**Days:** 30

**Item description:** It is an extruded PVC tube approximately 100cm long, made in both 40F and 36F in diameter. The tube has two interior lumens, with a hole pattern drilled into the distal end of the tubing in one of the lumens only. The tube also comes with a rounded tip that is used to cap the distal end of the tube. The tube is pad printed with measurement markings.

### Technical Information

-----

#### Supplier Information

-----

**Type of supplier being sought:** Distributor

**Reason for scouting submission:** Market Research

### Summary of technical specifications and performance requirements

-----

**Describe the manufacturing processes (elaborate to provide as much detail as possible):** It is an extruded PVC tube approximately 100cm long, made in both 40F and 36F in diameter. The tube has two interior lumens, with a hole pattern drilled into the distal end of the tubing in one of the lumens only. The tube also comes with a rounded tip that is used to cap the distal end of the tube. The tube is pad printed with measurement markings.

**Provide dimensions / size / tolerances / performance specifications for the item:** The tube is approximately 100cm long, made in both 40F and 36F in diameter. Smooth finish and colorite 18064D, a clear, flexible, non-toxic vinyl compound

**List required materials needed to make the product, including materials of product components:** Colorite 18064D, a clear, flexible, non-toxic vinyl compound

**Are there applicable certification requirements?:** Needs to meet the requirements for ISO 13485

**Are there applicable regulations?:** No

**Are there any other standards, requirements, etc.?:** No

### Business Information

-----

#### Volume and pricing

-----

**Estimated potential business volume:** Anticipated Volume: 5,000-10,000 units annually for the first year, with anticipated growth

**Estimated target price / unit cost information (if unavailable explain):** Unavailable - New Product Startup

**Delivery requirements**

-----

**When is it needed by?:** 1 month

**Describe packaging requirements:** must be shipped straight, not curled up.

**Where will this item be shipped?:** Pittsburgh, Pennsylvania

**Additional Information**

-----

**Photos or diagrams of the item**

-----

**Check if you uploaded file(s) to Box.com:** Yes

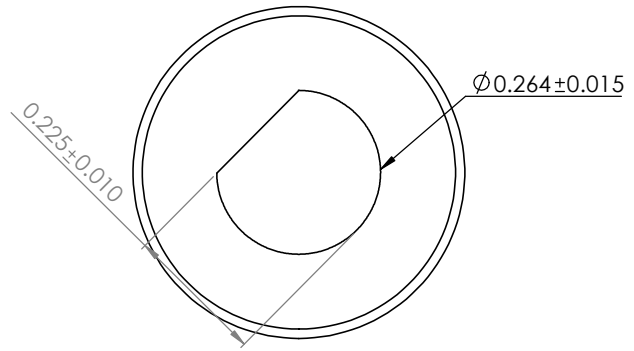
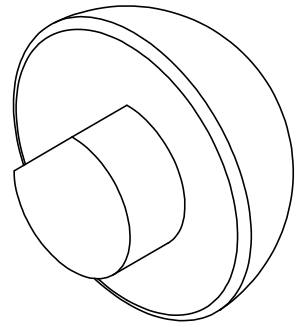
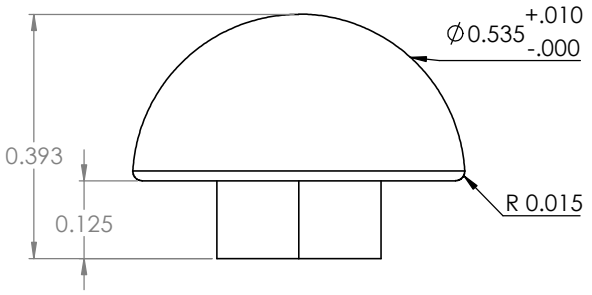
4

3

2

1

REVISIONS		
REV.	DESCRIPTION	DATE
1	RELEASED	2/16/23



NOTE:  
1. MATERIAL IS PVC NATURAL, COLORITE 18064D

UNLESS OTHERWISE SPECIFIED	DO NOT SCALE DRAWING	
DIMENSIONS ARE IN INCHES	NAME	DATE
TOLERANCES:	DRAWN	JMC 2/16/23
FRACTIONAL: $\pm 1/8$	CHECKED	
ANGULAR: $\pm 0.5$ (degree)	ENG APPR.	
TWO PLACE DECIMAL: $\pm .050$	MFG APPR.	
THREE PLACE DECIMAL: $\pm .010$	Q.A	
INTERPRET GEOMETRIC TOLERANCING PER:	COMMENTS	
MATERIAL		
FINISH		

PROPRIETARY AND CONFIDENTIAL  
THE INFORMATION CONTAINED IN THIS DRAWING IS THE SOLE PROPERTY OF THE MANUFACTURER. ANY REPRODUCTION IN PART OR AS A WHOLE WITHOUT THE WRITTEN PERMISSION IS PROHIBITED.

TITLE:		
40 Fr Tip		
Size	DWG NO.	Rev
<b>B</b>	DWG-GCT-002-40	<b>1</b>
SCALE:		SHEET 1 OF 1

4

3

2

1

B

B

A

A

4

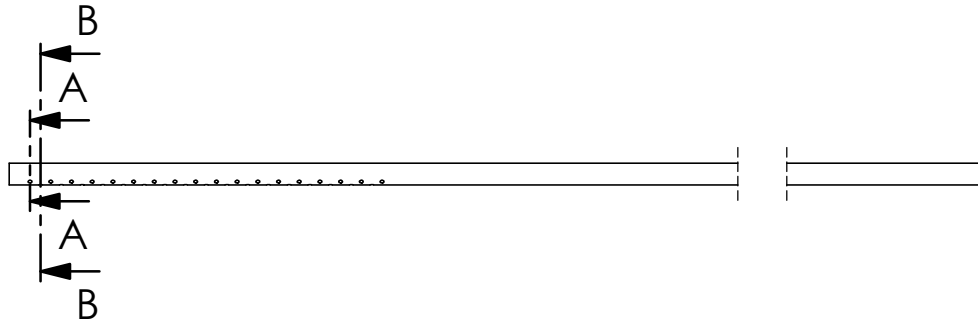
3

2

1

REVISIONS		
REV.	DESCRIPTION	DATE
1	Released	2/Dec/2021
2	Material was GLS TPE Shore 70A Added hole location tolerance Added clarification on number of holes	6/July/2022
3	Added OD to drawing	9/15/2022
4	Corrected tolerances to match manufacturing specifications. Added Inspection dimensions.	12/21/2022
5	Added note #6 to reference drawing GCT-001-01 for pad print specifications.	2/21/2023
6	Deleted note #3, and X,Y axis reference from note #4.	3/1/2023

$\phi .525 \pm .010$



8.50

$0.500 \pm .020$

17X 0.50  
EQUALLY SPACED  
(18 Holes)

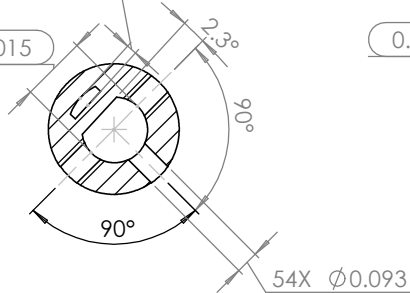
[19.177]  
 $0.755 \pm .020$

16X 0.50  
EQUALLY SPACED  
(17 Holes)

36.000

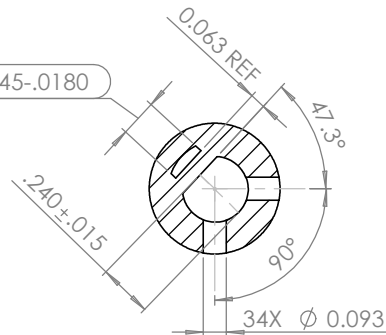
$0.040-0.080$

$0.264 \pm 0.015$



SECTION A-A  
SCALE 2 : 1

$0.145-.0180$



SECTION B-B  
SCALE 2 : 1

Notes:

1. Catheter Material: Colorite 18064D
2. Dimensions: Inches
3. All Materials and Processes Must Be Approved by Endolumik Prior to Manufacture
4. Measure OD in 2 places, 90 degrees apart. Average must be within specification
5. See drawing GCT-001-01 for pad print marking specifications

PROPRIETARY AND CONFIDENTIAL  
THE INFORMATION CONTAINED IN THIS  
DRAWING IS THE SOLE PROPERTY OF THE  
MANUFACTURER. ANY REPRODUCTION IN  
PART OR AS A WHOLE WITHOUT THE  
WRITTEN PERMISSION IS PROHIBITED.

UNLESS OTHERWISE SPECIFIED	DO NOT SCALE DRAWING	
DIMENSIONS ARE IN INCHES	NAME	DATE
TOLERANCES:	DRAWN	JMC
FRACTIONAL: $\pm 1/8$	CHECKED	3/1/2023
ANGULAR: $\pm 10$ (degree)	ENG APPR.	
TWO PLACE DECIMAL: $\pm .050$	MFG APPR.	
THREE PLACE DECIMAL: $\pm .010$	Q.A	
INTERPRET GEOMETRIC TOLERANCING PER:	COMMENTS	
MATERIAL		
FINISH		

TITLE:		
40F Gastric Calibration Tube with Hole Pattern		
Size	DWG NO.	Rev
B	DWG-GCT-001-40	6
SCALE: 1:3		SHEET 1 OF 1

4

3

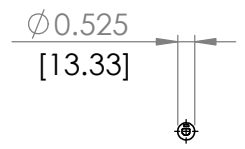
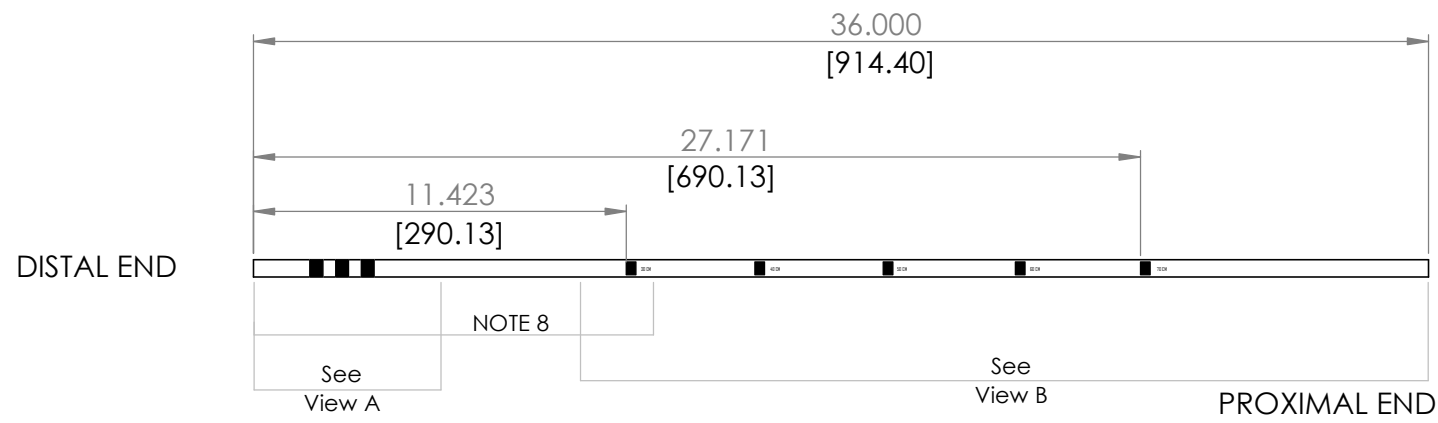
2

1

4 3 2 1

REVISIONS		
REV	DESCRIPTION	DATE
1	New	02/Dec/2021
2	Fixed Orientation of Centimeter Marks	08/Dec/2021
3	Fixed Markings on Distal End	24/June/2022
4	Fixed Markings on Distal End, Added Tolerances	28/June/2022

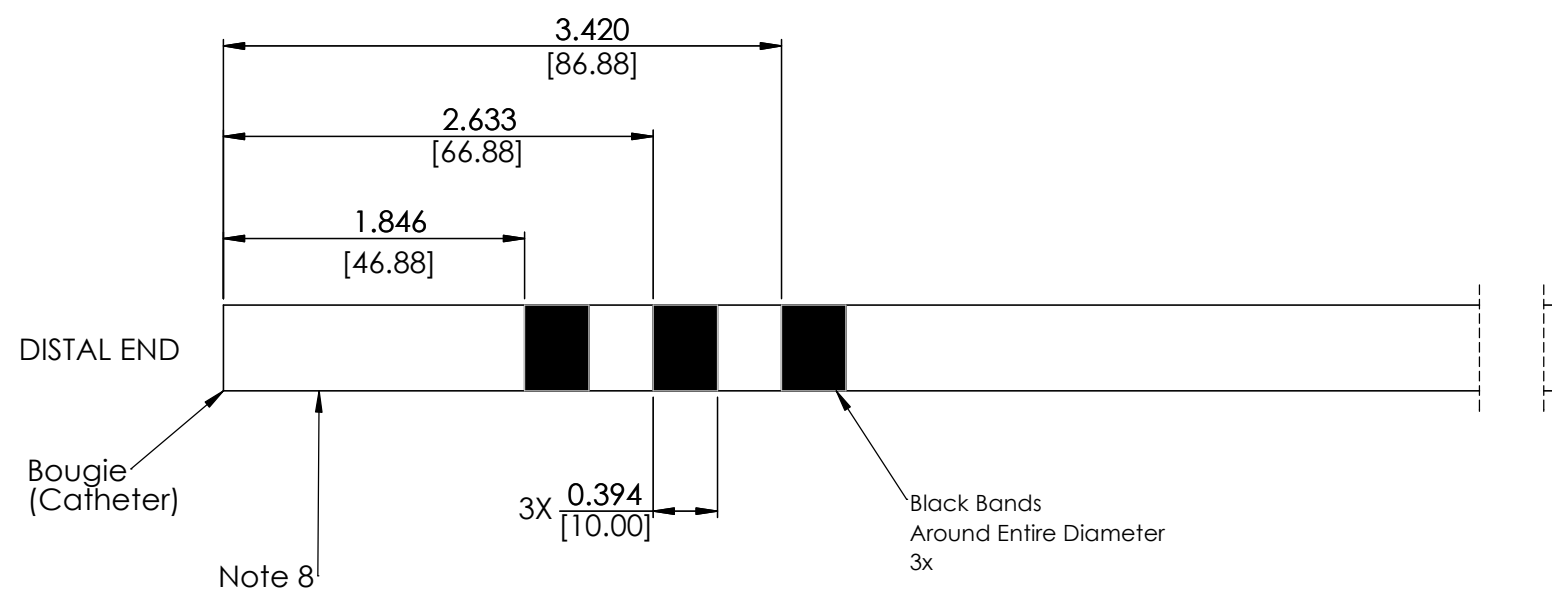
B



B

Notes:

1. Pad Print Indicated Markings on Tubing
2. Ink: Tampa Star TPR
3. Process: Pad Print
4. Dimensions: Inches / [Millimeters]
5. Tolerance on Location of Markings:  $\pm .020$  in [  $\pm 0.5$  mm]
6. Catheter Material: Colorite 18064D
7. All Materials and Processes Must Be Approved Prior to Manufacture
8. Catheter Has 118 Holes,  $.093 \pm 0.010$ " Dia, Throughout First 12 Inches of Distal End. See View C and Catheter Drawing.



**VIEW A**

A

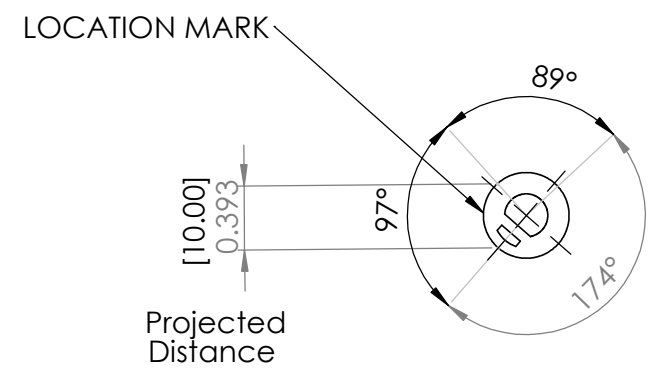
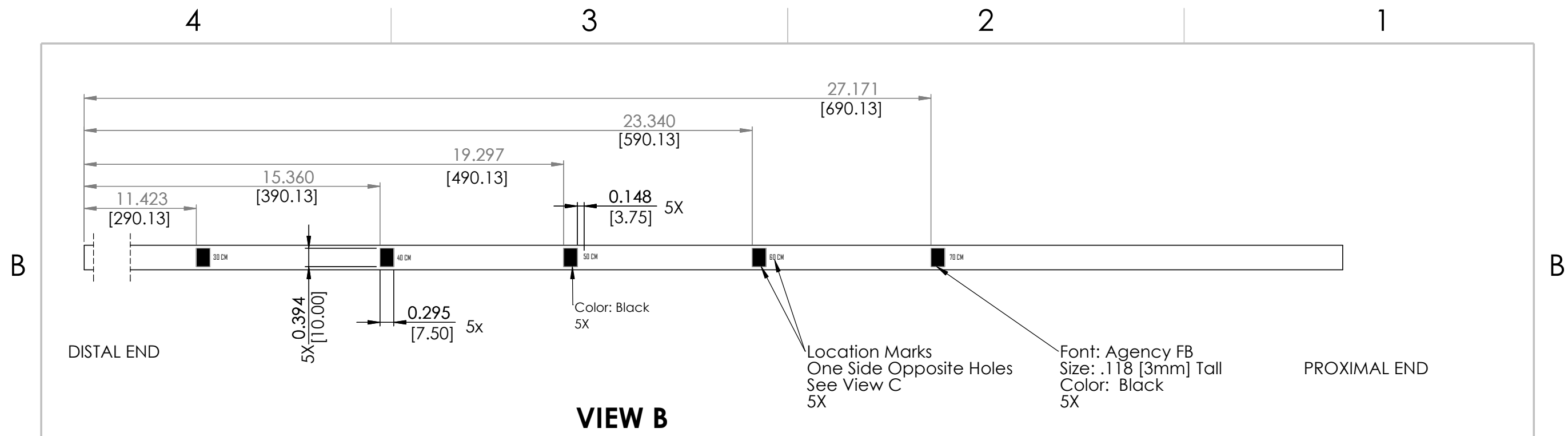
A

PROPRIETARY AND CONFIDENTIAL  
THE INFORMATION CONTAINED IN THIS DRAWING IS THE SOLE PROPERTY OF THE MANUFACTURER. ANY REPRODUCTION IN PART OR AS A WHOLE WITHOUT THE WRITTEN PERMISSION IS PROHIBITED.

UNLESS OTHERWISE SPECIFIED	DO NOT SCALE DRAWING	
DIMENSIONS ARE IN INCHES	NAME	DATE
TOLERANCES:	DRAWN	MKC 28/June/2022
FRACTIONAL: $\pm 1/8$	CHECKED	
ANGULAR: $\pm 0.5$ (degree)	ENG APPR.	
TWO PLACE DECIMAL: $\pm .050$	MFG APPR.	
THREE PLACE DECIMAL: $\pm .010$	Q.A	
INTERPRET GEOMETRIC TOLERANCING PER:	COMMENTS	
MATERIAL		
FINISH		

TITLE: <b>Pad Print Markings Gen 2 40Fr Bougie</b>		
Size <b>B</b>	DWG NO. <b>DWG-GCT-001-1</b>	Rev <b>4</b>
SCALE:	SHEET 1 OF 2	

4 3 2 1



SEE NOTES SHEET 1

PROPRIETARY AND CONFIDENTIAL  
 THE INFORMATION CONTAINED IN THIS  
 DRAWING IS THE SOLE PROPERTY OF THE  
 MANUFACTURER. ANY REPRODUCTION IN  
 PART OR AS A WHOLE WITHOUT THE  
 WRITTEN PERMISSION IS PROHIBITED.

UNLESS OTHERWISE SPECIFIED	DO NOT SCALE DRAWING	
DIMENSIONS ARE IN INCHES	DRAWN	NAME
TOLERANCES:	CHECKED	DATE
FRACTIONAL: ± 1/8	ENG APPR.	
ANGULAR: ± 0.5 (degree)	MFG APPR.	
TWO PLACE DECIMAL: ± .050	Q.A	
THREE PLACE DECIMAL: ± .010	COMMENTS	
INTERPRET GEOMETRIC TOLERANCING PER:		
MATERIAL		
FINISH		

TITLE: <b>Pad Print Markings Gen 2 40Fr Bougie</b>		
Size <b>B</b>	DWG NO. <b>DWG-GCT-001-1</b>	Rev <b>4</b>
SCALE:	SHEET 2 OF 2	

4 3 2 1

4 3 2 1

B

B

A

A