

# ITEM OPPORTUNITY SYNOPSIS

**Name of the item to be scouted:** Pump Housing Hopper & Pump Housing Flanged

**State item to be used in:** Pennsylvania

## **Describe the Item:**

**Please describe the item application/the end use of item.** Pump Housing for a progressive cavity pump in different variations and sizes.

## **Supplier Information:**

**Type of Supplier being sought (select from list below)**

**Manufacturer**

**Contract Manufacturer**

**Distributor**

**Other (please specify)**

**Reason for scouting submission (select from list below)**

**2<sup>nd</sup> Supplier**

**Price**

**Re-Shore**

**Past supplier no longer available**

**New Product Startup**

**Other (please specify)** Price and Leadtime

## **Summary of Technical Specifications and Performance Requirements:**

**Describe the manufacturing processes (elaborate to provide as much detail as possible).** Cutting, bending, welding, machining

**Provide dimensions / size / tolerances / performance specifications of the item.** Hopper: 15-43" long, 5-12" diameter, hopper opening 18-20" Flanged: 15-43" long, 5-12" diameter

**List required materials needed to make the product, including materials of product components, if applicable.** 304, 316, 1020 or similar (A-36) steel sheet metal, round stock to make standard flanges, custom flanges

**Are there applicable certification requirements?**

**Yes**

**No**

**Please Explain:** Welder to be certified to ASME AWS D1.1, D1.3 and D1.6 or similar

**Are there any applicable regulations that apply to the production of this item?**

**Yes**

**No**

**Please Explain:**

**Are there any other standards, requirements?**

**Yes**

**No**

**Please Explain:**

**Additional Comments:**

**Additional technical comments:** custom housings. Usually made to order and lot sizes 1-5 pcs max.

**Volume and Pricing:**

**Estimated Potential Business Volume (i.e. #Units per day, month, year):** Hopper: total business volume 50-100pcs of custom housings per year Flanged: total business volume 100-200pcs of custom housings per year

**Estimated Target Price / Unit Cost Information:** depending on size and material. can be discussed later

**Delivery Requirements:**

**When is it needed by? (Immediate, 30 days, 6 months, etc)** next 1-3 month planned to start up

**Describe packaging requirements (i.e., individually/ group packaging).** skids or boxes depending on size

**Where will this item be shipped?** Exton, PA

**Additional Comments:**

**Is there other information you would like to include?** please see attached pdf with photos. variation can be wall thickness (up to 3/8"), flanges position, number of ports, length and diameter of housing, material used.

# NETZSCH

Proven Excellence.■

Pumps & Systems

**NETZSCH**

Proven Excellence.

## Welding and Fabrication RFQ package

Localizing welding and fabrication capabilities  
Thorsten Thiebach

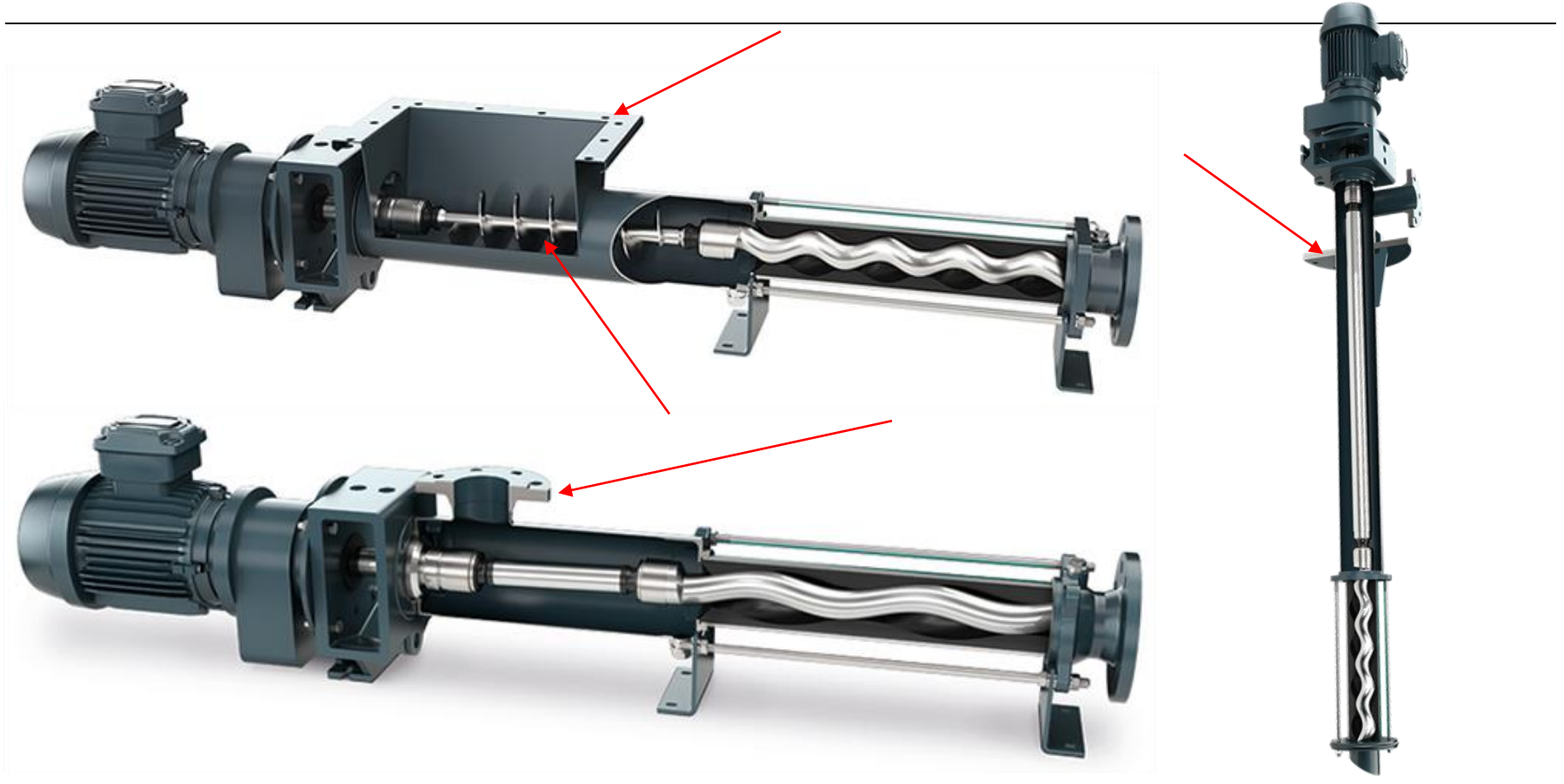
- Localization of sheet metal welding and machining
- Building up a domestic and strategic partner that can fulfill the requirements at a competitive level compared to our current footprint

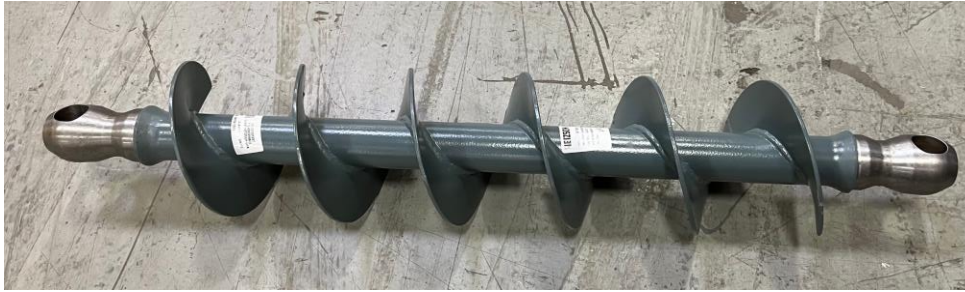
*Attached are photos, descriptions and drawings of typical components. These are examples of a certain size and execution.*

- Size of your company (revenue, locations, etc)?
- Number of employees?
- In business since?
- What welding certificates and procedures do you have in place?
- Are you welders certified?
- Please provide photos of similar products you have manufactured in the past.
- Please list your machinery relevant to manufacture the requested components.
- Are you ISO9001 certified?
- Do you have your own delivery trucks?

Product pictures with components highlight in this RFQ package

**NETZSCH**





Full view



Welded flights

Coupling rod machined





---

**Range:**

- Up to 1100mm/43" long
- Mainly between 400-700mm/15"-27" long

**Basic material:**

- AISI316
- AISI1020

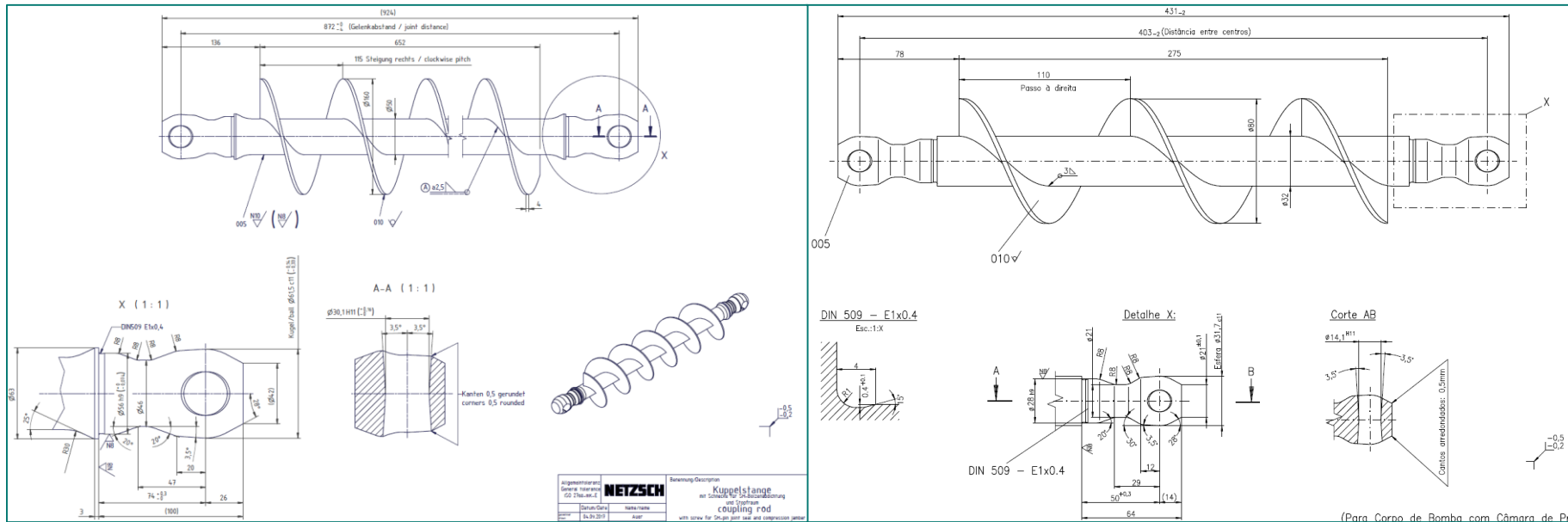
**Comments:**

- Diameter and pitch of flights varies
- Painting for 1020 optional

**Estimated quantity p.a.:**

- 50-100 pcs

## Coupling Rod with Screw





Full view



Machining  
top: stator side  
bottom: lantern side



Welding inside

---

## Range:

- length 400mm-1000mm/15"-40"
- Diameter 130mm-300mm/5"-12"

## Basic Materials:

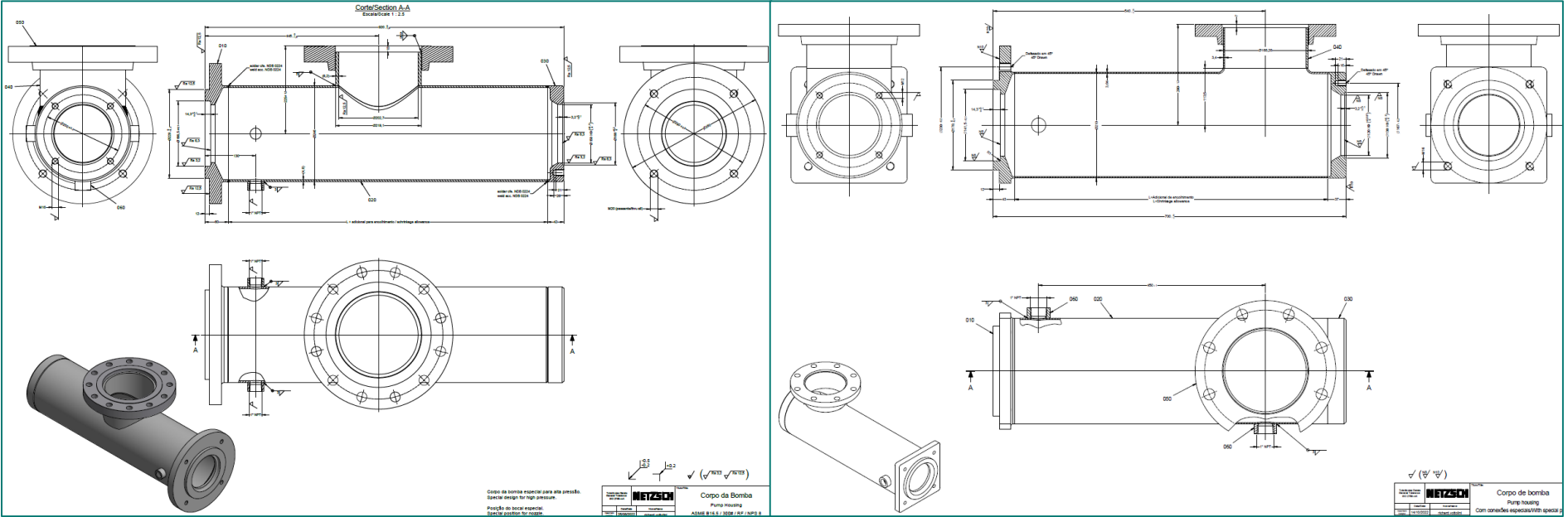
- AISI316
- AISI304
- AISI1020

## Comments:

- Consists off standard flange with welded neck, stator adapter flange, lantern flange and formed sheet metal or round tube.
- Wall thickness of housing can vary between 3mm-6mm/0.125"-0.25"

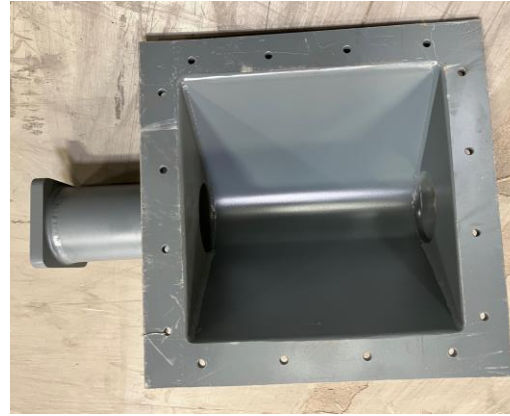
## Estimated quantity p.a.:

- 200-400pcs





Full view



Welding inside



Machining  
lantern side



Machining  
stator side

---

### Range:

- Housing length up to approx. 1100mm/43"
- Hopper opening can vary based on customer requirements, approx. up to 450mm wide

### Basic Materials:

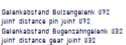
- AISI316
- AISI1020

### Comments:

- Design of bolt connection can be changed to welded flat bar instead of folding
- Design: flange + sheet metal welded to pipe + hopper welded + flange

### Estimated quantity p.a.:

- 50-100pcs







Full view



Welding below  
mounting plate



Welding above  
mounting plate



Machining requirements  
toward lantern

---

## Range:

- Mounting plate approx. 250-500mm/9"-20"
- Housing length approx. 500-2000mm/20"-78"

## Basic Materials:

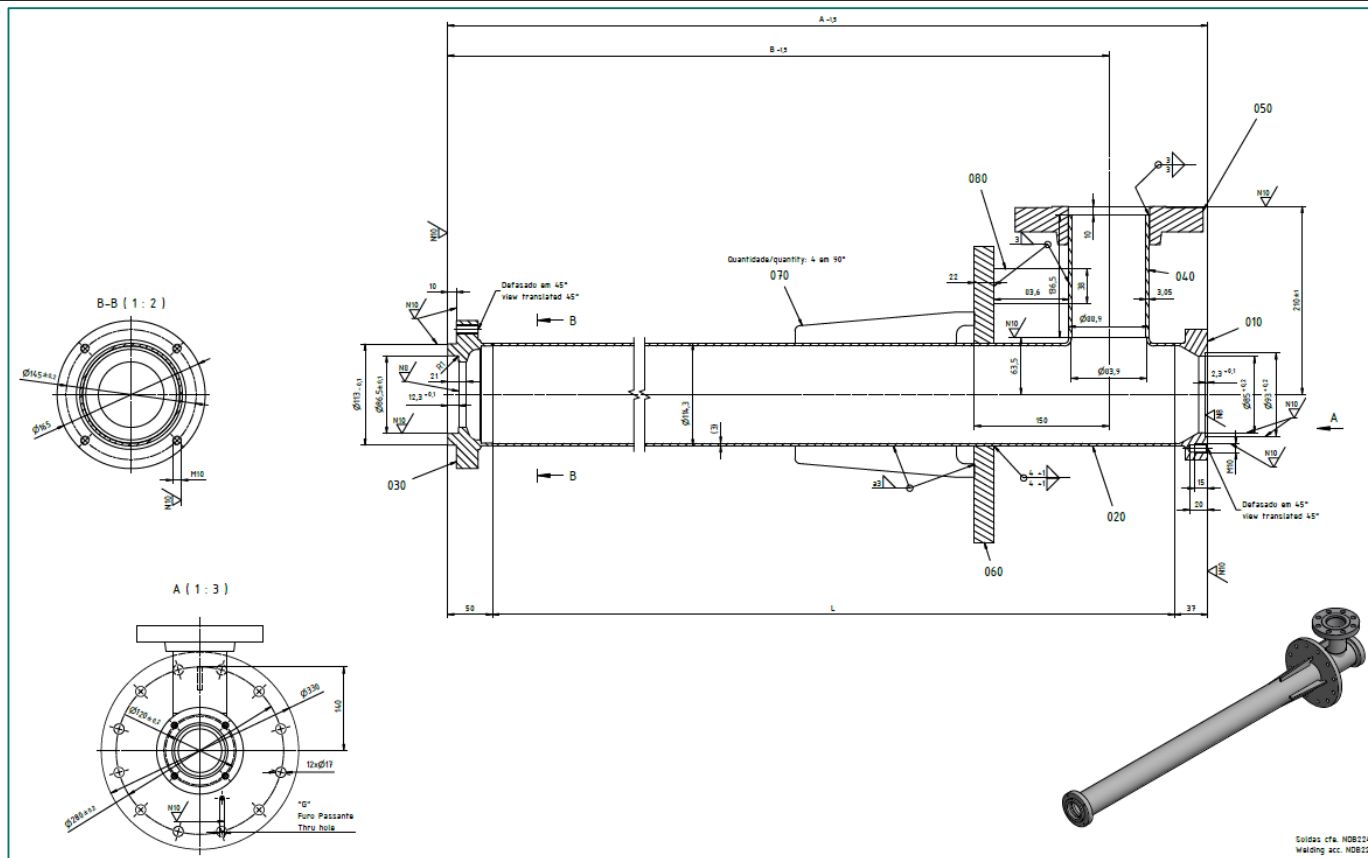
- AISI1020

## Comments:

- Custom design, mounting plate and immersion depth vary based on customer requirements

## Estimated quantity p.a.:

- 10-20pcs





# NETZSCH

Proven Excellence.

You can rely on NETZSCH.