

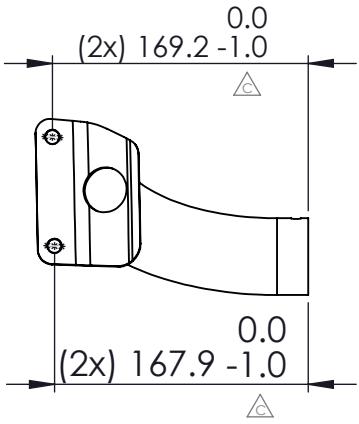
ITEM OPPORTUNITY SYNOPSIS

Scouting Number:	2024-064
Name of the item to be scouted:	Grill Guard Tube
State item to be used in:	Wisconsin
Describe the Item:	
Please describe the item application/the end use of the item.	Grill guard tube for light bar. Mounted to the bumper of a Jeep Wrangler or Gladiator. The grille guard is really more for looks than structure. The mounting hardware will not allow a lot of force to be placed on the tube. TYRI currently provides this to MOPAR using a 2" diameter tube, TYRI is going to introduce a custom version with a 2 1/2" diameter tube. Parts should be zinc plated and then powder coated with black paint. TYRI Americas will do the final assembly of the grille guard tubes to the light.
Supplier Information:	
Type of Supplier Being Sought (select from the list below):	
Manufacturer	x
Contract Manufacturer	
Distributor	
Other (Please Specify)	
Reason for Scouting Submission (select from the list below)	
2nd Supplier	
Price	
Re-Shore	
Past supplier no longer available	
New Product Startup	x
BABA	
Other (Please Specify)	
Summary of Technical Specifications and Performance Requirements:	
Describe the manufacturing processes (elaborate to provide as much detail as possible)	The attached drawing is just for reference. The difference would be that we use a 2 1/2 inch tube instead of 2 inch, the height is taller, and the plating/painting specs would be different. The supplier would need to bend the tube, add the holes/slots in the tube, provide the bent plate "feet", weld the feet to the tubes, and then zinc plate and paint the weldment.
Provide dimensions / size / tolerances / performance specifications of the item	2 1/2 inch tube. See specification for other dimensions. Mounting plate would be welded to the tube by MIG welding, with a 1/8" weld bead, welded all around.
List required materials needed to make the product, including materials of product components, if applicable	See Specification for coating.
Are there applicable certification requirements?	
Yes	
No	x
Please explain:	
Are there any applicable regulations that apply to the production of this item?	
Yes	
No	x
Please explain:	
Are there any other standards / requirements?	
Yes	
No	x
Please explain:	
Additional Comments:	

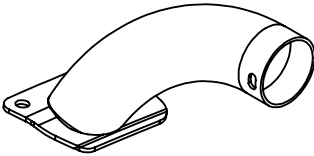
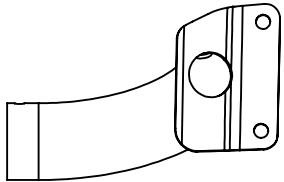
<p>Additional technical comments:</p>	<p>* See the attached image (Application_picture.pdf) for the current version sold to MOPAR. If you look up 82216457AB (current MOPAR part number) on the internet you will find information/images on the 2-inch diameter tube version. * See the attached for the final assembled light. TYRI provides the light, need to find a supplier for the bend tube with the welded on plate. The attached 06-381 drawing shows the 2 inch diameter tubes that we currently use for MOPAR. This is made by bending the entire tube section, welding on the mounting plates and then cutting out the middle section of the tube. This makes for easier fixturing to weld the mounting plates and keep them consistent. If a supplier has a different way of doing this we are open to it. We are looking for something like this only with a 2 ½" diameter tube.</p>
<p>Volume and Pricing:</p>	
<p>Estimated Potential Business Volume (i.e. #units per day, month, year):</p>	<p>This is a start-up. Price and quantities are yet to be determined. Our hope would be that one set (a left hand and a hand weldment) could be purchased for \$40-\$45. This will be a production part with estimated volume of 500 – 2000 per year.</p>
<p>Estimated Target Price/Unit Cost Information:</p>	<p>This is a start-up. Price and quantities are yet to be determined. Our hope would be that one set (a left hand and a hand weldment) could be purchased for \$40-\$45. This will be a production part with estimated volume of 500 – 2000 per year.</p>
<p>Delivery Requirements:</p>	
<p>When is it needed by? (Immediate, 30 days, 6 months, etc.)</p>	<p>As soon as possible.</p>
<p>Describe packaging requirements (i.e. individually/group packaging, etc.)</p>	<p>The parts should be packed in bulk such that they will not be damaged.</p>
<p>Where will this item be shipped?</p>	<p>TYRI Americas in Stevens Point Wisconsin</p>
<p>Additional Comments:</p>	
<p>Is there other information you would like to include?</p>	

Refer to solid model for undimensioned geometry.
Ensure to have the latest release.

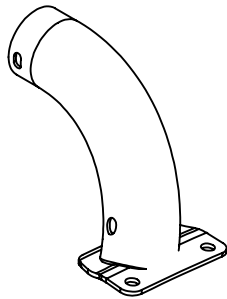
REVISIONS		
REV.	DESCRIPTION	DATE
C	Added Tolerances	2022-5-10



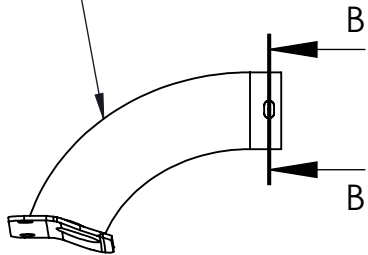
VIEW A



ISOMETRIC VIEW



Tyri Part No. **06-381**
Grille Guard Tube for
Light Bar, Left side part

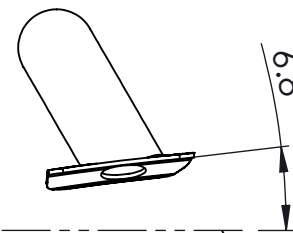
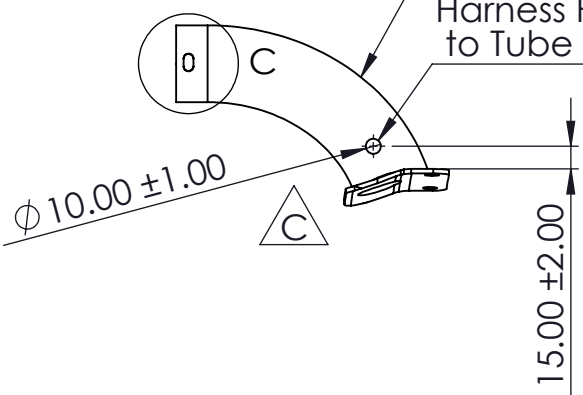


VIEW B

Symmerty Plane

Tyri Part No. **06-382**
Grille Guard Tube for
Light Bar, Right side part

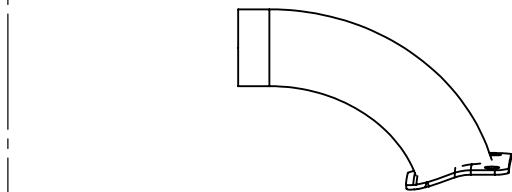
Harness Hole Perpendicular
to Tube Center Axis



VIEW C

Horizontal Plane

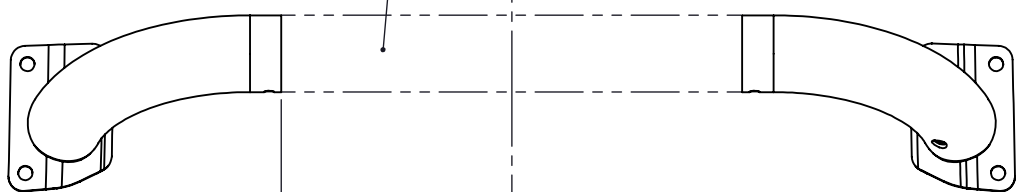
Symmerty Plane



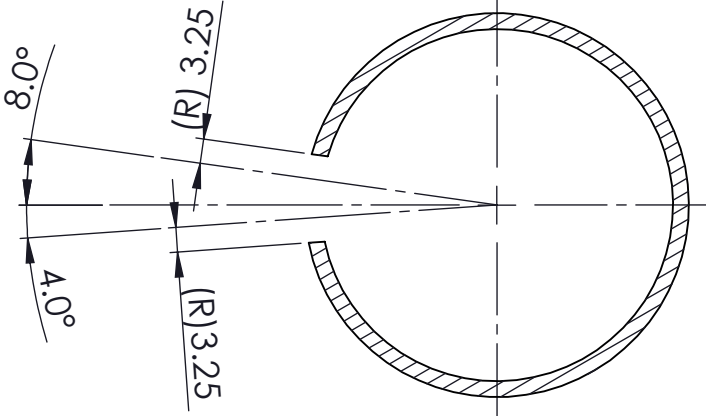
VIEW D

Tube section to be removed

Symmerty Plane

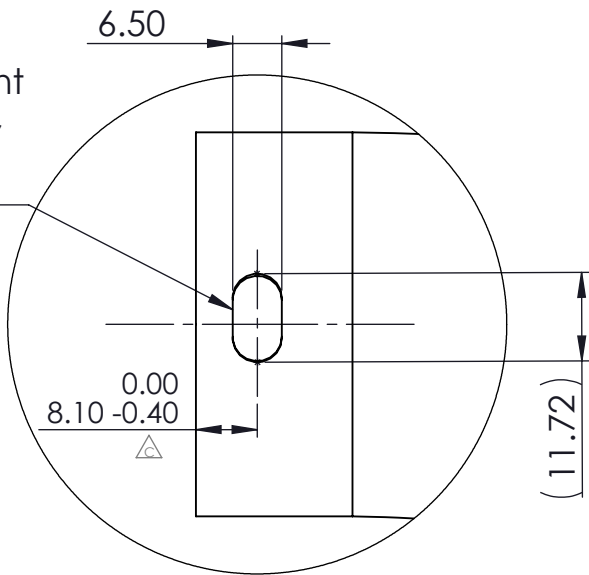


VIEW E



SECTION B-B
SCALE 1 : 1

Slot shape dimensions
shown are meant to represent
the planar machining profile,
and is not to be defined by
the tube OD surface



DETAIL C
SCALE 1 : 1

Grille Guard Tube for Light Bar	
06-381	Left side part
06-382	Right side part

MANUFACTURED USING FCA PART NUMBER 82215351

DIMENSIONS FOR PROCESS CONTROL SHOWN IN BOX

TOLERANCES UNLESS OTHERWISE STATED: 2.0 A B C

NO BURRS. NO SHARP EDGES

MACHINE BEFORE SURFACE TREATMENT

SURFACE FINISH SPECIFICATIONS:
BLACK POWDER COAT OVER CLEAR ZINC
1. SURFACE TREATMENT - ZINC PHOSPHATE CHEMICAL PER PS-508.
2. ZINC PLATING - PS.50036 C8 PLAIN.
3. SURFACE FINISH - POWDER COAT AW038RXF JET BLACK.
MS-PE-16-2 AND PAINT CONTINUOUS PERFORMANCE PF-7501.
4. E-COAT PER MS-90124 AND PS-7232.

This document and its content is the property of TYRI International and must not be reproduced,
disclosed to any third party or used in any unauthorized manner without written consent.
© Copyrights 2016 TYRI International.

Material (FCA PART NUMBER 82215351)		Drawn by - Date BB 2020-06-08	Approved by - Date BB 2021-04-07	Unless otherwise stated: Sharp edges broken Dimension before surface treatment		
Surface Treatment Other, See Note on Drawing		Color Other, See Note on Drawing		Min Draft Angle 0.3°	Fillet Radii 0.25	Ra 3.2
Title/Name (English) Grille Guard Tube for Light Bar, Left and Right Parts		Phase Released		General Tolerances (ISO 2768-class) mK	Projection Method 	
Drawing Number 06-381	Page number 1 of 1	Revision C	Scale 1:5	Size A2		

