

## ITEM OPPORTUNITY SYNOPSIS

<b>Scouting Number:</b>	2024-187
<b>Name of the item to be scouted:</b>	32 oz Plastic Bottles
<b>State item to be used in:</b>	Puerto Rico
<b>Describe the Item:</b>	
Please describe the item application/the end use of the item.	A client is looking for a plastic bottle manufacturer due to low bottle inventory. It's a 32oz High Density Polyethylene (HDPE) plastic bottle used to store milk.
<b>Supplier Information:</b>	
<b>Type of Supplier Being Sought (select from the list below):</b>	
Manufacturer	x
Contract Manufacturer	
Distributor	
Other (Please Specify)	
<b>Reason for Scouting Submission (select from the list below)</b>	
2nd Supplier	x
Price	
Re-Shore	
Past supplier no longer available	
New Product Startup	
BABA	
Other (Please Specify)	
<b>Summary of Technical Specifications and Performance Requirements:</b>	
Describe the manufacturing processes (elaborate to provide as much detail as possible)	The manufacturing process needed for this product is blow molding.
Provide dimensions / size / tolerances / performance specifications of the item	The dimensions and specifications of this product can be found on the pdf diagram attached below, which will include container weight, neck dimensions, bottle dimensions, material, overflow capacity, fill capacity, and tolerances required.
List required materials needed to make the product, including materials of product components, if applicable	HDPE Plastic
Are there applicable certification requirements?	
Yes	x
No	
Please explain:	FDA
Are there any applicable regulations that apply to the production of this item?	
Yes	
No	x
Please explain:	
Are there any other standards / requirements?	
Yes	
No	x
Please explain:	
<b>NAICS CODES:</b>	
NAICS 1	326160 Plastics bottle manufacturing
NAICS 2	
<b>Additional Comments:</b>	
Additional technical comments:	
<b>Volume and Pricing:</b>	
Estimated Potential Business Volume (i.e. #units per day, month, year):	Estimated volume of 200,000 bottles per year
Estimated Target Price/Unit Cost Information:	The target prices \$0.15 a bottle to manage lotistics cost to San Juan, Puerto Rico. However, we have the flexibility because the logistics would depend on your location.
<b>Delivery Requirements:</b>	
When is it needed by? (Immediate, 30 days, 6 months, etc.)	As soon as possible
Describe packaging requirements (i.e. individually/group packaging, etc.)	Standard packaging methods. Bulk crates
Where will this item be shipped?	San Juan, PR

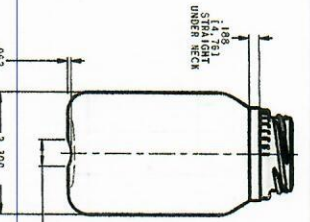
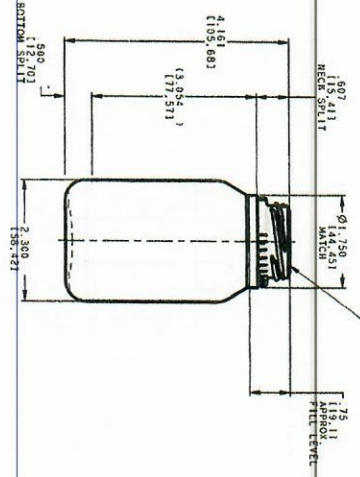
**Additional Comments:**

Is there other information you would like to include?

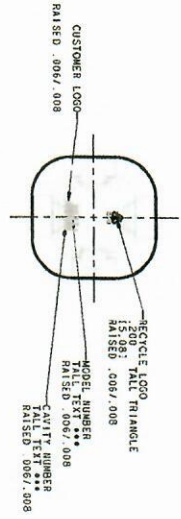
REV	DESCRIPTION	BY	DATE



3MM BULGE/WRAP MODIFIED SUPER QUID SPIN-TWIN NECK FINISH  
SEE DRAWING 1010-6417 FOR DIMENSIONS NOT SHOWN



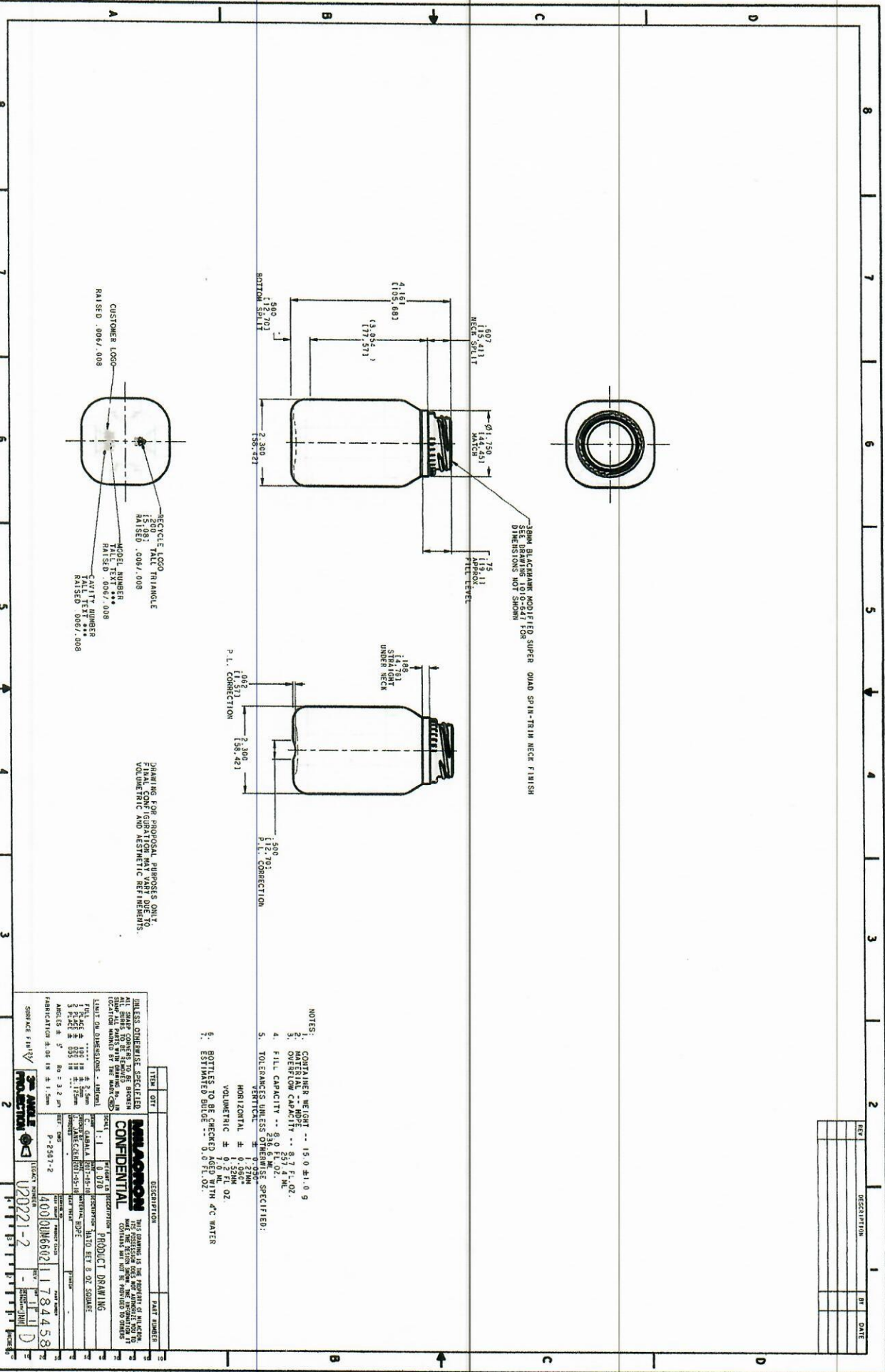
P.L. CORRECTION ± 0.002 (1.151)  
P.L. CORRECTION ± 0.002 (1.511)



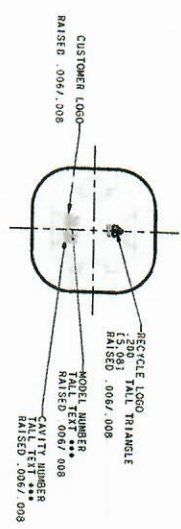
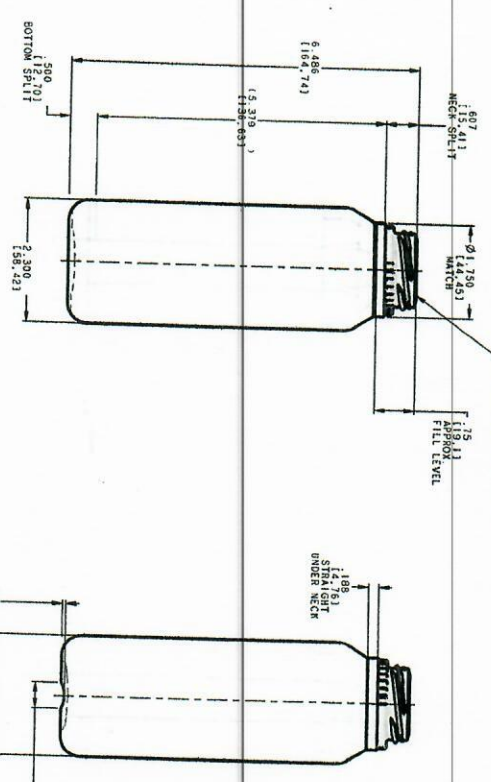
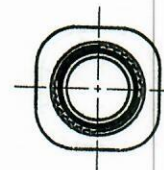
DRAWING FOR PROPOSAL PURPOSES ONLY.  
FINAL CONFEIGATION MAY VARY DUE TO VOLUMETRIC AND AESTHETIC REFINEMENTS.

- NOTES:
1. CONTAINER WEIGHT -- 15.0 ± 1.0 g
  2. MATERIAL -- HDPE -- 8.7 FL. OZ.
  3. MATERIAL CAPACITY -- 297.4 ML.
  4. FILL CAPACITY -- 296.5 ML.
  5. TOLERANCES UNLESS OTHERWISE SPECIFIED:  
 VERTICAL: ± 0.25MM  
 HORIZONTAL: ± 0.50MM  
 VOLUMETRIC: ± 0.2 FL. OZ.  
 ESTIMATED BUFG: ± 0.0 FL. OZ.

TITLE	QTY	DESCRIPTION	PART NUMBER
		UNLESS OTHERWISE SPECIFIED	
		CONFIDENTIAL	
		PRODUCT DRAWING	
		REV: 1	784458
		DATE: 1/11/11	784458
		BY: [Signature]	784458
		CHECKED: [Signature]	784458
		APPROVED: [Signature]	784458
		DATE: 1/11/11	784458



1402.



DRAWING FOR PROPOSAL PURPOSES ONLY  
FINAL CONFIGURATION AND DIMENSIONS TO BE DETERMINED BY THE MANUFACTURER.  
VOLUMETRIC AND AESTHETIC REFINEMENTS.

- NOTES:
1. CONTAINER WEIGHT -- 20.0 ± 0.1 g
  2. OVERFLOW CAPACITY -- 14.7 FL. OZ.
  3. OVERFLOW CAPACITY -- 425.0 ML
  4. FILL CAPACITY -- 14.0 ± 0.2 FL. OZ.
  5. TOLERANCES UNLESS OTHERWISE SPECIFIED:  
VERTICAL ± 0.125MM  
HORIZONTAL ± 0.250MM  
VOLUMETRIC ± 0.4 FL. OZ.  
6. BOTTLES TO BE CHECKED AHEAD WITH HOT WATER  
7. ESTIMATED BLEBS -- 0.0 FL. OZ.

REV	DESCRIPTION	BY	DATE

ITEM	QTY	DESCRIPTION	PART NUMBER

UNLESS OTHERWISE SPECIFIED  
ALL DIMENSIONS TO BE IN MILLIMETERS  
DIMENSIONS IN PARENTHESES ARE IN INCHES  
LOCATION MARKED BY THE MANUFACTURER  
LIMIT DIMENSIONS -- MINIMUM

FILL CAPACITY ± 0.125mm  
OVERFLOW CAPACITY ± 0.125mm  
WEIGHT ± 0.125g  
VOLUMETRIC ± 0.125mm

REVISIONS

REV	DATE	DESCRIPTION

400010660211784445  
U30194-2

