

ITEM OPPORTUNITY SYNOPSIS

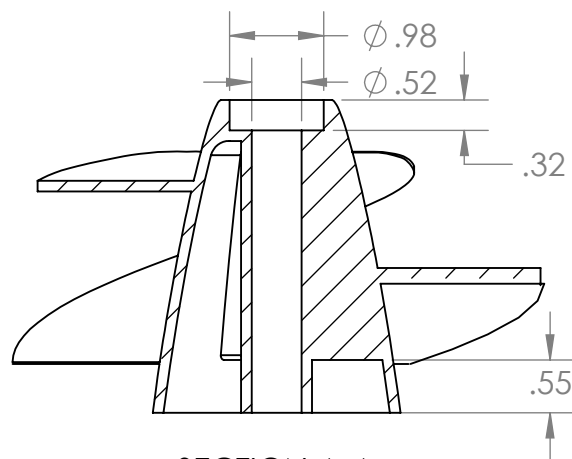
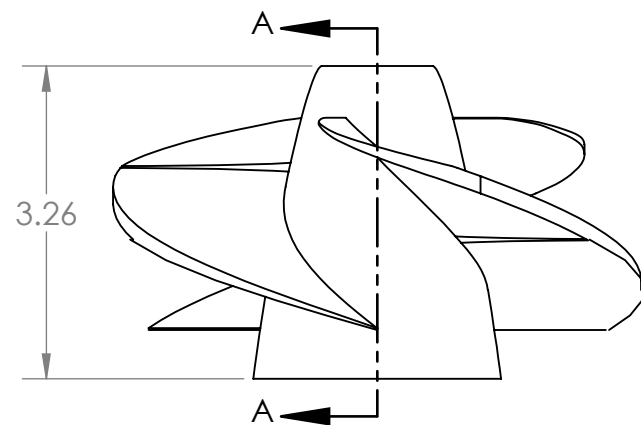
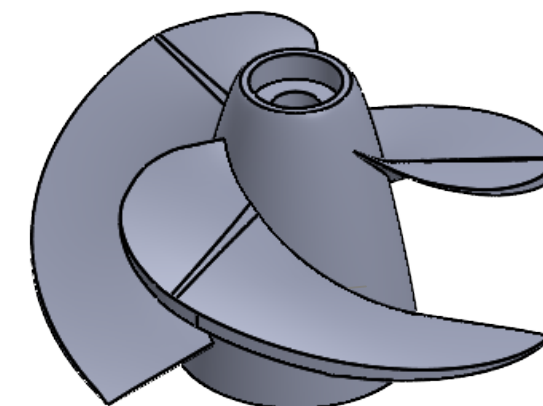
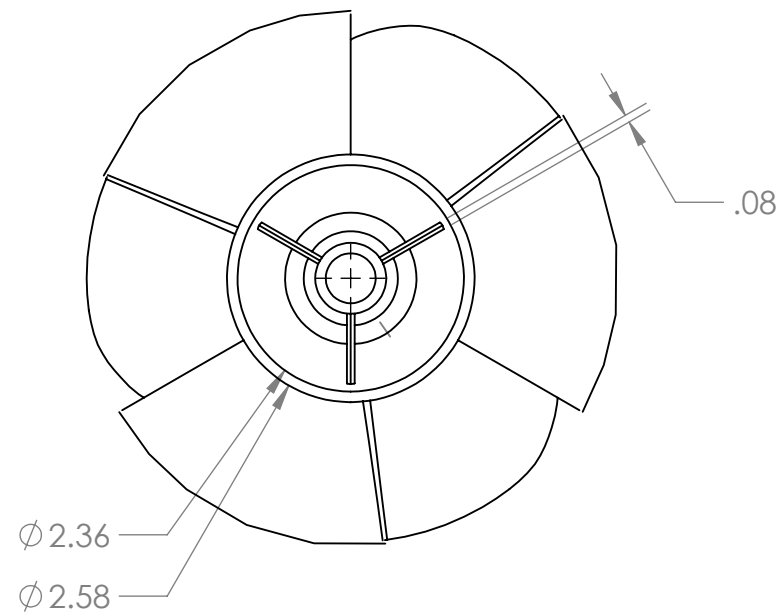
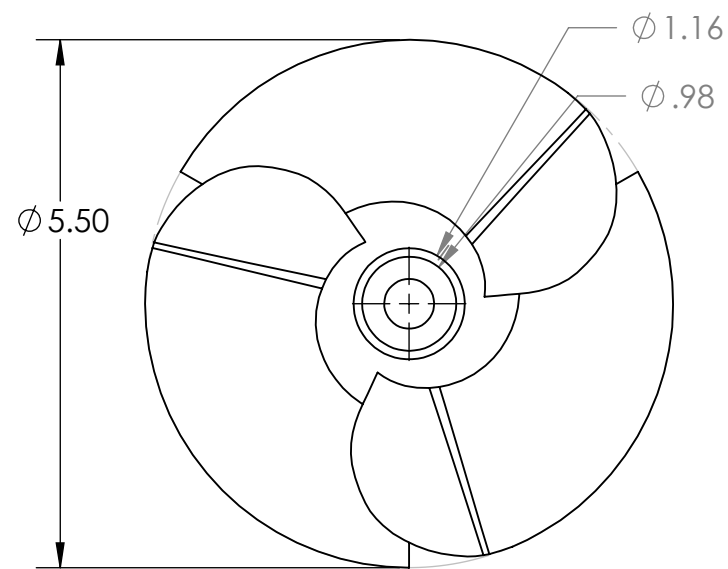
Scouting Number:	2024-303
Name of the item to be scouted:	Renegade Marine Jet Drive
State item to be used in:	Idaho
Describe the Item:	
Please describe the item application/the end use of the item.	This product is a progressive pitch impeller for jet pumps.
Supplier Information:	
Type of Supplier Being Sought (select from the list below):	
Manufacturer	x
Contract Manufacturer	
Distributor	
Other (Please Specify)	
Reason for Scouting Submission (select from the list below)	
2nd Supplier	x
Price	
Re-Shore	
Past supplier no longer available	
New Product Startup	
BABA	
Other (Please Specify)	
Summary of Technical Specifications and Performance Requirements:	
Describe the manufacturing processes (elaborate to provide as much detail as possible)	(Casting + Machining) or (Conventional Machining)
Provide dimensions / size / tolerances / performance specifications of the item	Dimensions: See drawing
List required materials needed to make the product, including materials of product components, if applicable	316 Stainless Steel
Are there applicable certification requirements?	
Yes	
No	x
Please explain:	
Are there any applicable regulations that apply to the production of this item?	
Yes	
No	x
Please explain:	
Are there any other standards / requirements?	
Yes	
No	x
Please explain:	
NAICS CODES:	
NAICS 1	
NAICS 2	
Additional Comments:	
Additional technical comments:	
Volume and Pricing:	
Estimated Potential Business Volume (i.e. #units per day, month, year):	8 different SKUS 10-50 per depending on demand.
Estimated Target Price/Unit Cost Information:	TBD - this is the initial run for these components.
Delivery Requirements:	
When is it needed by? (Immediate, 30 days, 6 months, etc.)	3-4 months
Describe packaging requirements (i.e. individually/group packaging, etc.)	Must be delivered undamaged.
Where will this item be shipped?	Boise, Idaho, United States
Additional Comments:	
Is there other information you would like to include?	This request is in regard to an updated design for a Marine Jet Drive Impeller manufacture we are working with. They are uncertain whether the process to make this will be through conventional machining or casting, then machining.

4

3

2

1



SECTION A-A

NOTE: STARTING ANGLE FOR THE FIN IS 23.5 DEGREES

NOTE: GENERAL DIMENSIONS ARE GIVEN. FOR MORE SPECIFIC DIMENSIONS, SEE 3D MODEL.

PROPRIETARY AND CONFIDENTIAL
 THE INFORMATION CONTAINED IN THIS DRAWING IS THE SOLE PROPERTY OF <INSERT COMPANY NAME HERE>. ANY REPRODUCTION IN PART OR AS A WHOLE WITHOUT THE WRITTEN PERMISSION OF <INSERT COMPANY NAME HERE> IS PROHIBITED.

		UNLESS OTHERWISE SPECIFIED:	NAME	DATE	TITLE: 5.5" Impeller
		DIMENSIONS ARE IN INCHES	DRAWN		
		TOLERANCES: FRACTIONAL ± ANGULAR: MACH ± BEND ± TWO PLACE DECIMAL ± THREE PLACE DECIMAL ±	CHECKED		
			ENG APPR.		
		INTERPRET GEOMETRIC TOLERANCING PER:	MFG APPR.		SIZE DWG. NO. REV B 1
		MATERIAL	Q.A.		
NEXT ASSY	USED ON	FINISH	COMMENTS:		
APPLICATION		DO NOT SCALE DRAWING			SCALE: 1:2 WEIGHT: SHEET 1 OF 1

4

3

2

1

B

B

A

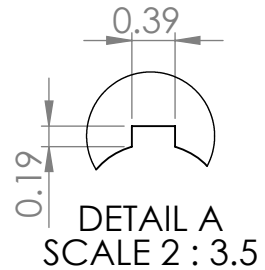
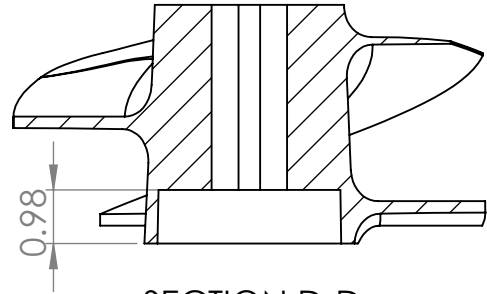
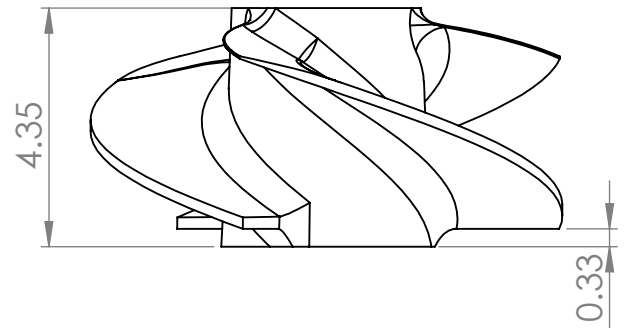
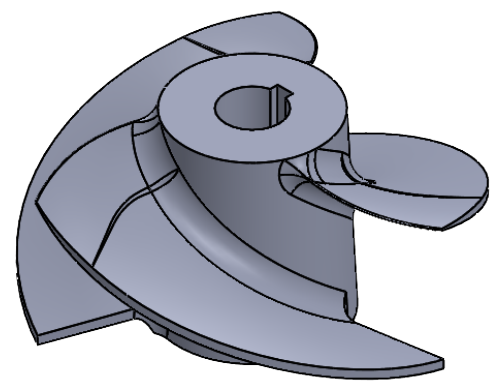
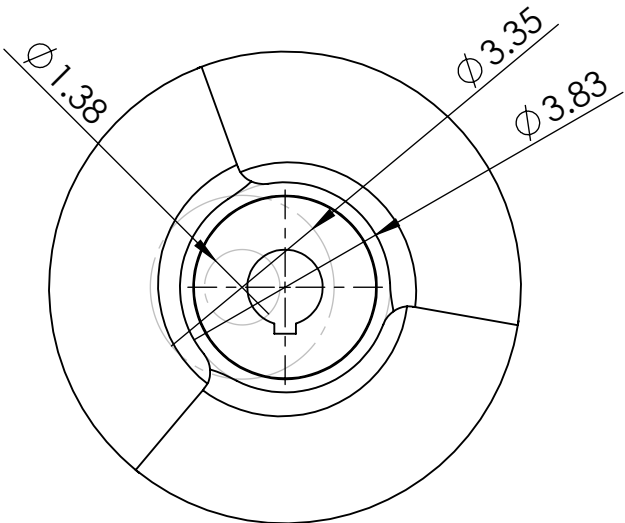
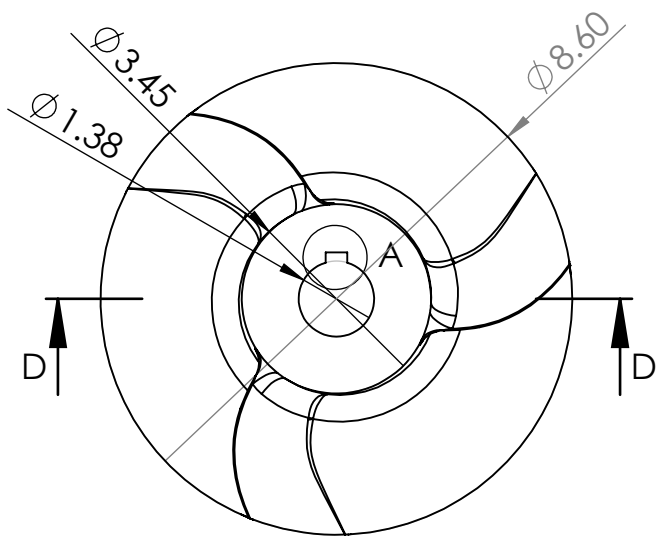
A

2

1

B

B



SECTION D-D
SCALE 1 : 3.5

DETAIL A
SCALE 2 : 3.5

NOTE: FINS ARE AT A CONSTANT ANGLE OF 19 DEGREES

NOTE: GENERAL DIMENSIONS ARE GIVEN FOR SPECIFIC DIMENSIONS SEE 3D MODEL

A

A

PROPRIETARY AND CONFIDENTIAL
THE INFORMATION CONTAINED IN THIS DRAWING IS THE SOLE PROPERTY OF <INSERT COMPANY NAME HERE>. ANY REPRODUCTION IN PART OR AS A WHOLE WITHOUT THE WRITTEN PERMISSION OF <INSERT COMPANY NAME HERE> IS PROHIBITED.

		UNLESS OTHERWISE SPECIFIED:		NAME	DATE
		DIMENSIONS ARE IN INCHES	DRAWN	MM	5/15/23
		TOLERANCES:	CHECKED		
		FRACTIONAL ±	ENG APPR.		
		ANGULAR: MACH ± BEND ±	MFG APPR.		
		TWO PLACE DECIMAL ±	Q.A.		
		THREE PLACE DECIMAL ±	COMMENTS:		
		INTERPRET GEOMETRIC TOLERANCING PER:			
		MATERIAL			
		FINISH			
NEXT ASSY	USED ON				
APPLICATION		DO NOT SCALE DRAWING			

NPD LAB - TECHHELP

TITLE:
8.5" SPRINTER REAR

SIZE	DWG. NO.	REV
A	1	
SCALE: 1:5	WEIGHT:	SHEET 1 OF 1

2

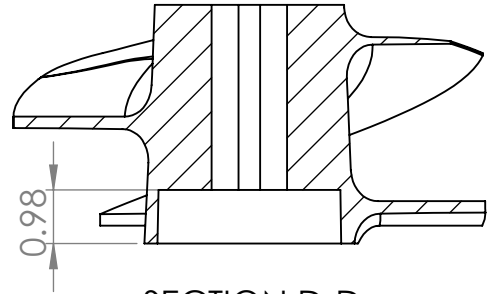
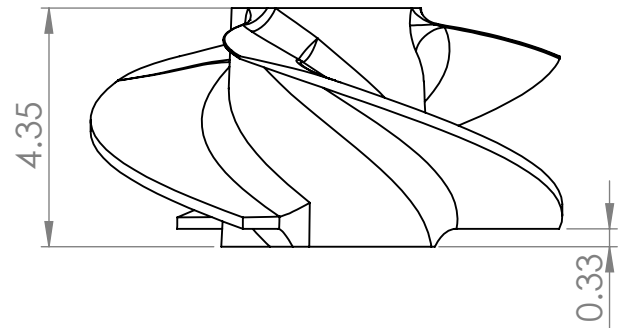
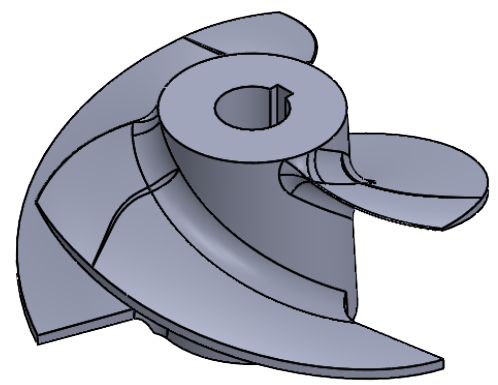
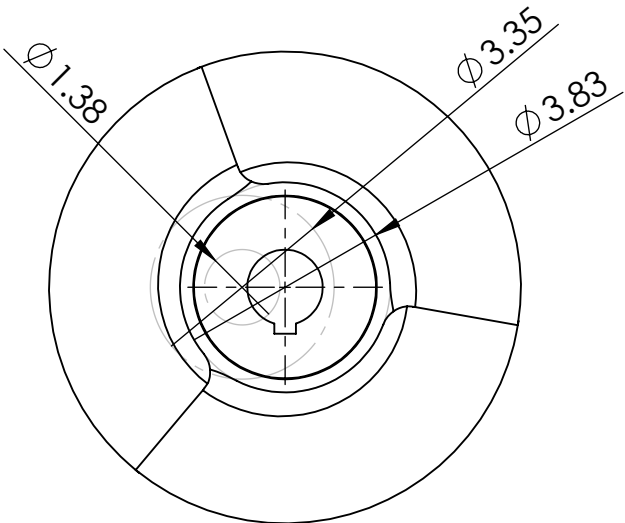
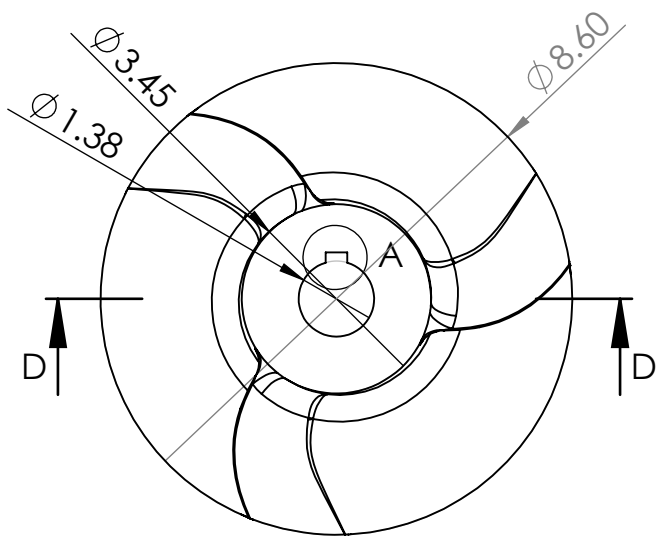
1

2

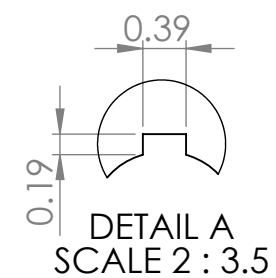
1

B

B



SECTION D-D
SCALE 1 : 3.5



DETAIL A
SCALE 2 : 3.5

NOTE: FINS ARE AT A CONSTANT ANGLE OF 19 DEGREES

NOTE: GENERAL DIMENSIONS ARE GIVEN FOR SPECIFIC DIMENSIONS SEE 3D MODEL

A

A

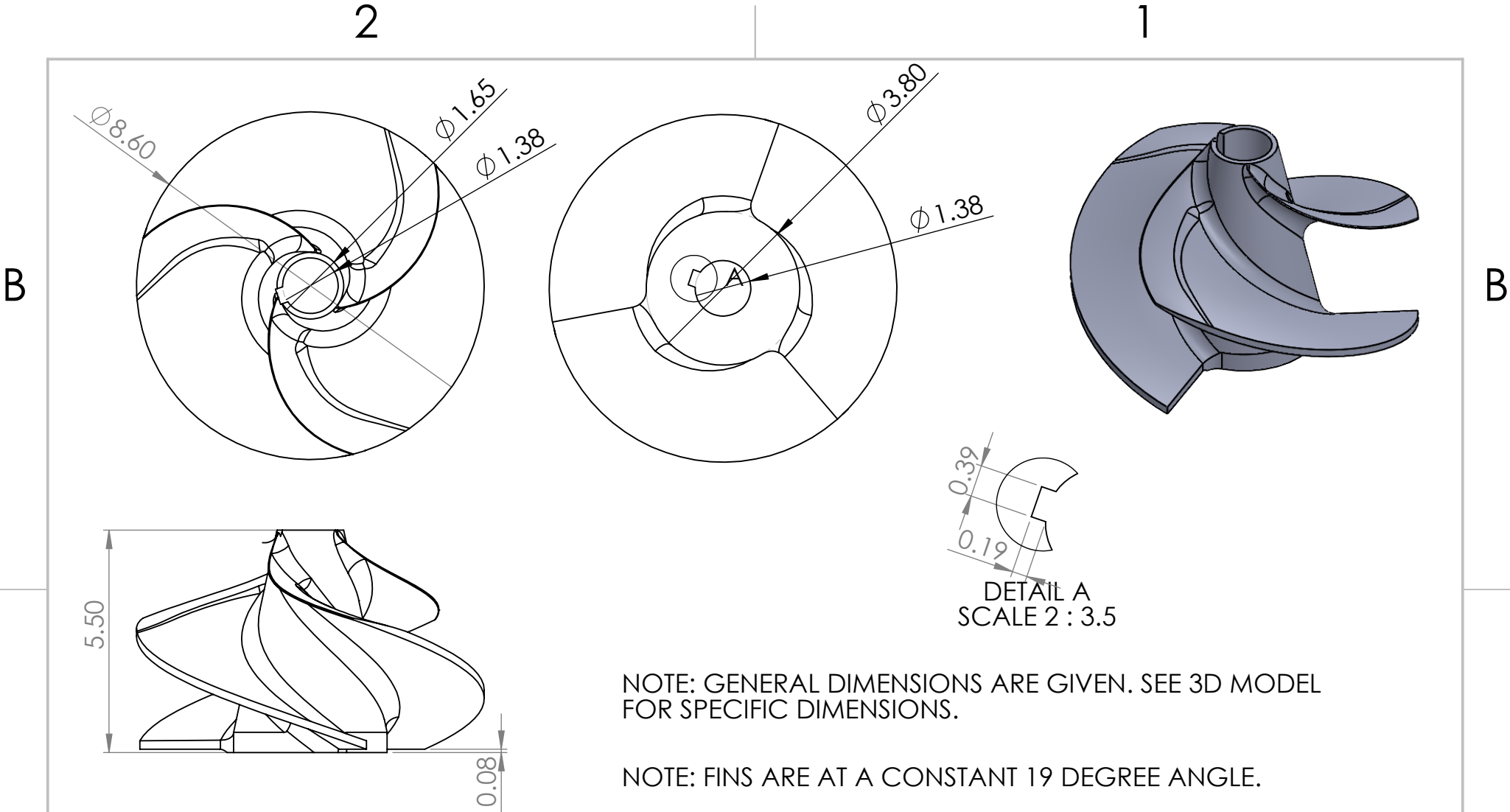
PROPRIETARY AND CONFIDENTIAL
THE INFORMATION CONTAINED IN THIS DRAWING IS THE SOLE PROPERTY OF <INSERT COMPANY NAME HERE>. ANY REPRODUCTION IN PART OR AS A WHOLE WITHOUT THE WRITTEN PERMISSION OF <INSERT COMPANY NAME HERE> IS PROHIBITED.

		UNLESS OTHERWISE SPECIFIED:		NAME	DATE
		DIMENSIONS ARE IN INCHES	DRAWN	MM	5/15/23
		TOLERANCES:	CHECKED		
		FRACTIONAL ±	ENG APPR.		
		ANGULAR: MACH ± BEND ±	MFG APPR.		
		TWO PLACE DECIMAL ±	Q.A.		
		THREE PLACE DECIMAL ±	COMMENTS:		
		INTERPRET GEOMETRIC TOLERANCING PER:			
		MATERIAL			
NEXT ASSY	USED ON	FINISH			
APPLICATION		DO NOT SCALE DRAWING			

NPD LAB - TECHHELP		
TITLE:		
8.5" SPRINTER REAR		
SIZE	DWG. NO.	REV
A	1	
SCALE: 1:5	WEIGHT:	SHEET 1 OF 1

2

1



NOTE: GENERAL DIMENSIONS ARE GIVEN. SEE 3D MODEL FOR SPECIFIC DIMENSIONS.

NOTE: FINS ARE AT A CONSTANT 19 DEGREE ANGLE.

A

PROPRIETARY AND CONFIDENTIAL
 THE INFORMATION CONTAINED IN THIS DRAWING IS THE SOLE PROPERTY OF <INSERT COMPANY NAME HERE>. ANY REPRODUCTION IN PART OR AS A WHOLE WITHOUT THE WRITTEN PERMISSION OF <INSERT COMPANY NAME HERE> IS PROHIBITED.

		UNLESS OTHERWISE SPECIFIED:		NAME	DATE
		DIMENSIONS ARE IN INCHES	DRAWN	MM	5/15/23
		TOLERANCES:	CHECKED		
		FRACTIONAL ±	ENG APPR.		
		ANGULAR: MACH ± BEND ±	MFG APPR.		
		TWO PLACE DECIMAL ±	Q.A.		
		THREE PLACE DECIMAL ±	COMMENTS:		
		INTERPRET GEOMETRIC TOLERANCING PER:			
		MATERIAL			
		FINISH			
NEXT ASSY	USED ON				
APPLICATION		DO NOT SCALE DRAWING			

NPD LAB - TECHHELP

TITLE:
8.5" SPRINTER FRONT

SIZE	DWG. NO.	REV
A	1	
SCALE: 1:5	WEIGHT:	SHEET 1 OF 1

2

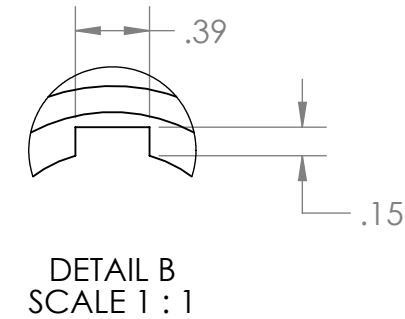
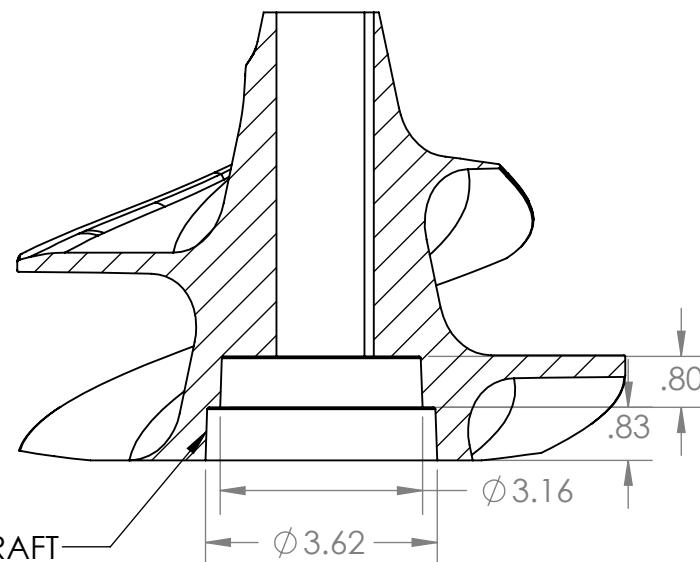
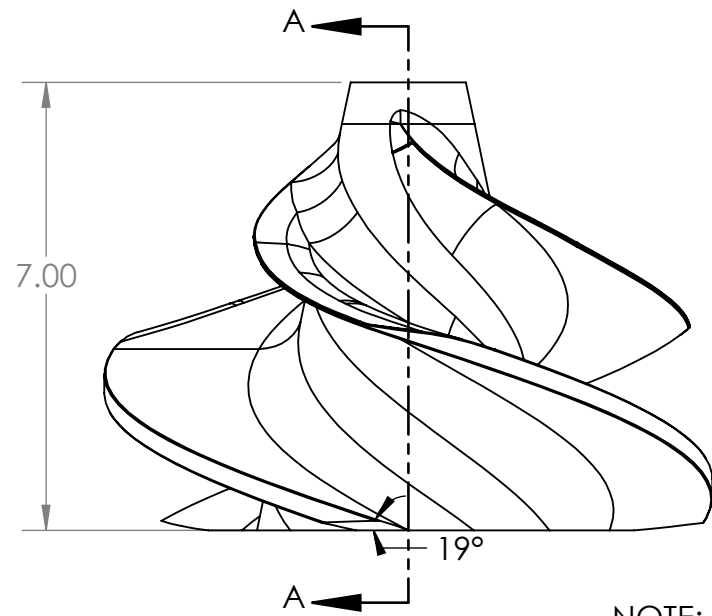
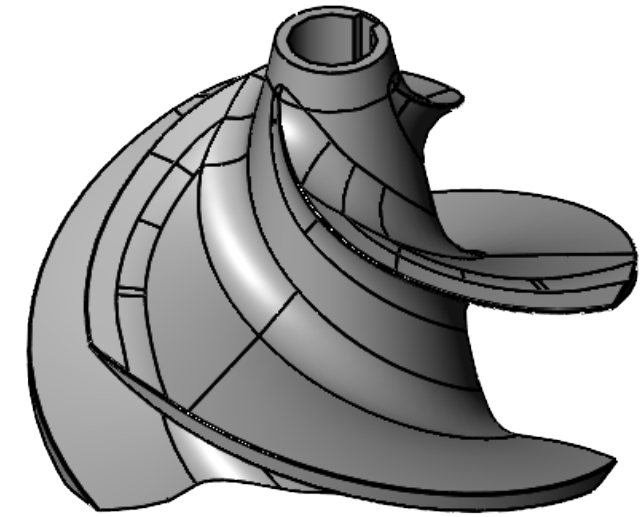
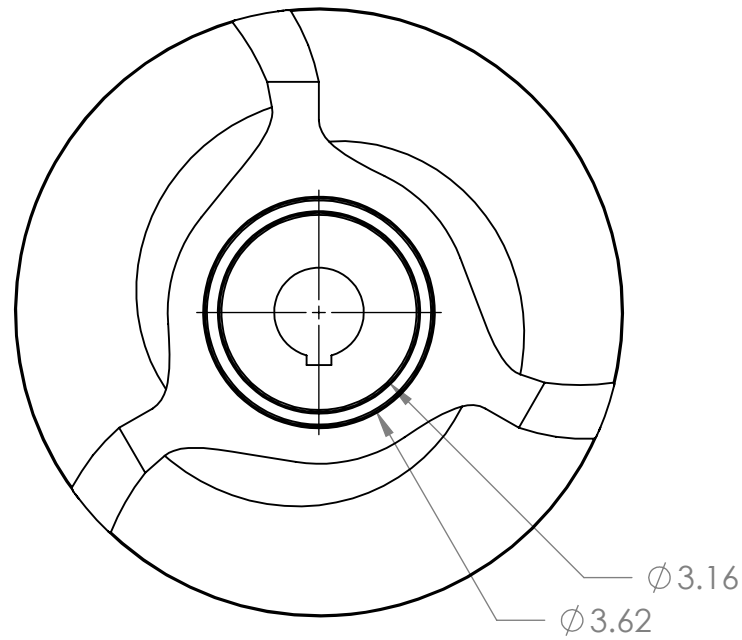
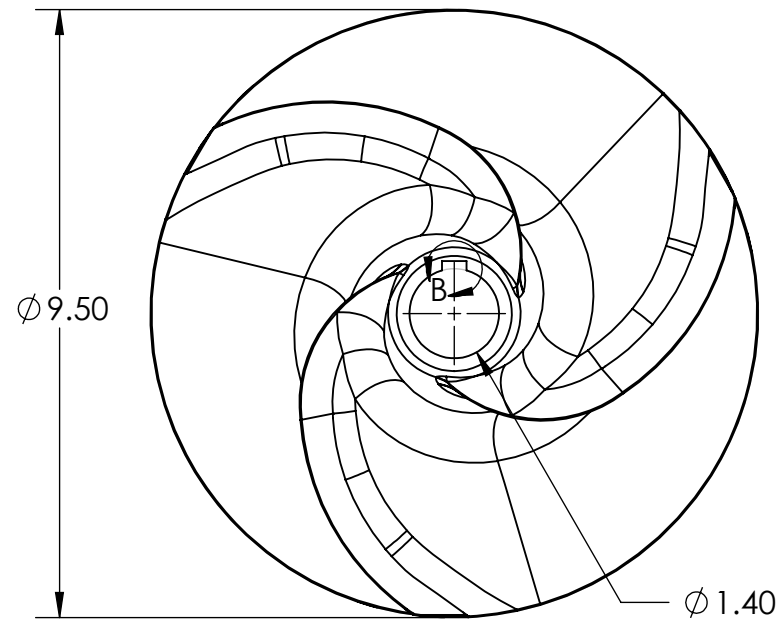
1

4

3

2

1



NOTE: 1 DEGREE DRAFT

NOTE: STARTING ANGLE IS 19 DEGREES. ANGLE IS SLIGHTLY PROGRESSIVE. SEE 3D MODEL FOR MORE DETAILS.

SECTION A-A
SCALE 1 : 3

NOTE: GENERAL DIMENSIONS ARE GIVEN. SEE 3D MODEL FOR MORE SPECIFIC DIMENSIONS

PROPRIETARY AND CONFIDENTIAL
THE INFORMATION CONTAINED IN THIS DRAWING IS THE SOLE PROPERTY OF <INSERT COMPANY NAME HERE>. ANY REPRODUCTION IN PART OR AS A WHOLE WITHOUT THE WRITTEN PERMISSION OF <INSERT COMPANY NAME HERE> IS PROHIBITED.

		UNLESS OTHERWISE SPECIFIED:		NAME	DATE
		DIMENSIONS ARE IN INCHES		DRAWN	
		TOLERANCES:		CHECKED	
		FRACTIONAL \pm		ENG APPR.	
		ANGULAR: MACH \pm BEND \pm		MFG APPR.	
		TWO PLACE DECIMAL \pm		Q.A.	
		THREE PLACE DECIMAL \pm		COMMENTS:	
		INTERPRET GEOMETRIC TOLERANCING PER:			
		MATERIAL			
NEXT ASSY	USED ON	FINISH			
APPLICATION		DO NOT SCALE DRAWING			
TITLE: 9.5" Impeller					
SIZE	DWG. NO.	REV			
B	1				
SCALE: 1:4		WEIGHT:		SHEET 1 OF 1	

4

3

2

1