

MEPNN Supplier Scouting Opportunity Synopsis

Section 1: General Information

Scouting Number	2024-305
Item to be Scouted	Aluminum Clad Wood Windows
Days to be scouted	21
Response Due By	10/30/2024
Description	<p>Aluminum Clad Wood Windows: windows for a Veteran's State Nursing Home in Boise, ID.</p> <p>Department of Veterans Affairs - State Home Grant Program (SHCGP): The VA State Veterans Home Construction Grant Program (SHCGP) is a partnership between the U.S. Department of Veterans Affairs (VA) and the States to construct, renovate, or repair State owned and operated nursing homes, domiciliaries, and/or adult day health care facilities. The program is authorized in Title 38 United States Code (USC) Section 8131-8137 and regulated in Title 38 Code of Federal Regulation (CFR) Part 59. VA may participate in up to 65 percent of the cost of construction or acquisition of State nursing homes or domiciliaries or for renovations/repairs to existing State Homes. There are more than 160 State Veterans Homes in 50 states and Puerto Rico with over 30,000 beds. (Homes are owned and operated by one of the 50 States, the District of Columbia, the U.S. Virgin Islands, the Commonwealth of Puerto Rico, Guam, the Commonwealth of the Northern Mariana Islands and American Samoa.)</p> <p>Project Information: Idaho's Division of Veteran Affairs submitted a grant application for federal financial assistance through VA's State Home Construction Grant Program (SHCGP). This project is listed on the FY2024 Priority List and is eligible for grant funding award, once the state can attest to all Federal requirements, including meeting BABA requirements. The state has submitted documentation that 233 of 405 products are not BABA compliant. VA is on the agency due diligence by leveraging NIST's MEP Scouting.</p> <p>Project Grant Information: -Grant #/Location/Title: FAI 16-009: Boise, ID – Bed Replacement: 122 Bed Facility -Project Scope: construct a new, 5-story 186,278 gsf, nursing home bed replacement at 5601 North Five Mile Road, Boise, ID for 122 residents. -Allowable Grant Costs VA Grant Participation (65%) : \$107,728,806.46 VA participation: \$70,023,724.20</p>
Notify Requester Immediately	
State item to be used in	Idaho

Section 2: Technical Information

Type of supplier being sought	Manufacturer
Reason	BABA
Describe the manufacturing processes (elaborate to provide as much detail as possible)	millwork, metal fabrication, glass manufacturing.

Provide dimensions / size / tolerances / performance specifications for the item	varies: window units are a range of 5'-0"/6'-0"/8'-0"/9'-0" W x 6' H with muntins (typically a vertical muntin dividing the unit in half with a horizontal muntin at 4'-0" high and each of the top pane divided vertically in half). Please see attached product description for specifications.
List required materials needed to make the product, including materials of product components	wood, glass, metal/aluminum, paint, gaskets, weather strip, hardware, window blinds.
Are there applicable certification requirements?	No
Are there applicable regulations?	Yes
Details	Must be BABA compliant (Build America, Buy America (BABA) Act, P.L. 117-58, Secs 70911 – 70917).
Are there any other standards, requirements, etc.?	Yes
Details	Please see specifications provided in email response to the MEP Supplier Scouting Team.
NAICS 1	321911 Wood window and door manufacturing
NAICS 2	
Additional Technical Comments	Must be BABA compliant (Build America, Buy America (BABA) Act, P.L. 117-58, Secs 70911 – 70917)

Section 4: Business Information

Estimated potential business volume	~140 windows; one-time purchase for construction of new ID State Veteran Home.
Estimated target price / unit cost information (if unavailable explain)	This is US Department of Veterans Affairs' due diligence for BABA compliance to award a construction grant to ID. VA does not have detailed construction/product cost data. (I contacted the state for their window budget/pricing allowance and have not heard back.) Please provide best available pricing.
When is it needed by?	Estimate ~16 months: 1) VA to due BABA due diligent (4 months*), 2) MIAO BABA waiver process (6 months), and 3) ID to award the construction contract plus time for when windows needed on-site for installation (6 months**). Note: all times are estimates. *Includes NIST MEP scouting time. **I contacted that state and have not heard back. My best estimate based upon past experience.
Describe packaging requirements	Pallets
Where will this item be shipped?	Boise, ID

Additional Comments

Is there other information you would like to include?	Agency: U.S. Department of Veterans Affairs, VA Central Office (Washington, DC); Office of Construction and Facility Management Name/POC: Elizabeth Yo Email address: elizabeth.yo@va.gov
---	---

Aluminum Clad Wood Windows

PART 1 GENERAL

1.03 REFERENCE STANDARDS

- A. AAMA/WDMA/CSA 101/I.S.2/A440 - North American Fenestration Standard/Specification for Windows, Doors, and Skylights; 2022.
- B. AAMA 502 - Voluntary Specification for Field Testing of Newly Installed Fenestration Products; 2021.
- C. ASHRAE Std 90.1 I-P - Energy Standard for Buildings Except Low-Rise Residential Buildings; Most Recent Edition Adopted by Authority Having Jurisdiction, Including All Applicable Amendments and Supplements.
- D. ASTM E783 - Standard Test Method for Field Measurement of Air Leakage Through Installed Exterior Windows and Doors; 2002 (Reapproved 2018).
- E. ASTM E1105 - Standard Test Method for Field Determination of Water Penetration of Installed Exterior Windows, Skylights, Doors, and Curtain Walls, by Uniform or Cyclic Static Air Pressure Difference; 2015 (Reapproved 2023).
- F. ASTM E1996 - Standard Specification for Performance of Exterior Windows, Curtain Walls, Doors, and Impact Protective Systems Impacted by Windborne Debris in Hurricanes; 2023.
- G. AWMAC/WI (NAAWS) - North American Architectural Woodwork Standards; 2021, with Errata.

1.07 DELIVERY, STORAGE, AND HANDLING

- A. Protect factory finished surfaces with wrapping. Do not use adhesive papers or sprayed coatings that bond when exposed to sunlight or weather.

1.06 QUALITY ASSURANCE

- A. Manufacturer Qualifications: Company specializing in manufacturing products specified in this section with not less than three years of documented experience.
- B. Installer Qualifications: Company specializing in performing work of the type specified and with at least three years of documented experience.

1.08 WARRANTY

- A. See Section 01 7700 - Closeout Procedures for additional warranty requirements.
- B. Manufacturer Warranty: Provide 5-year manufacturer warranty for insulated glass units against seal failure, interpane dusting or misting, and replacement of same. Complete forms in Owner's name and register with manufacturer.
- C. Manufacturer Warranty: Provide 2-year manufacturer warranty against defects listed. Complete forms in Owner's name and register with manufacturer or warrantor.
 - 1. Degradation of color finish.
 - 2. Delamination or separation of finish cladding from window member.

PART 2 PRODUCTS

- A. Wood Windows: Wood frame and sash, factory fabricated and assembled.
 - 1. Exterior Finish: Metal clad, painted.
 - a. Exterior Color: [Black].
 - 2. Interior Finish: Factory finish stain, as selected by Architect from full product range of options .
 - 3. Configuration: As indicated on drawings.
 - 4. Window Product Types: FW - Fixed window , in accordance with AAMA/WDMA/CSA 101/I.S.2/A440.
 - 5. Factory glazed; dry glazing method.

6. Wood Species: Clear pine , preservative treated using treatment type suitable for required finish. Factory Finished
7. Metal Cladding: Formed aluminum, factory finished, factory fit to profile of wood members.
8. Glazing: Triple glazed, clear , Low-E coated , argon filled , with glass thicknesses as recommended by manufacturer for specified wind conditions.
 - a. Integral Blind Option: Raise and lower blinds between the glass
9. Weather Stop Flange: Continuous at perimeter of unit.
10. Clearances and Shim Spacing: Minimum required for installation and dynamic movement of perimeter seal.
11. Fasteners: Concealed from view.
12. Internal Drainage of Glazing Spaces to Exterior: Weep holes.

Performance Requirements:

- A. Comply with AAMA/WDMA/CSA 101/I.S.2/A440 requirements for the specific window type in accordance with the following:
 1. Performance Class (PC): CW .
- B. Design Pressure (DP): In accordance with applicable codes.
- C. Fenestration Assembly Thermal transmittance (U-value): Comply with ASHRAE Std 90.1 I-P for building envelope requirements for applicable climate zone.

PART 3 EXECUTION

3.01 EXAMINATION

- A. Verify wall openings and adjoining water-resistive barrier materials are ready to receive wood windows; see Section 07 2500.

3.02 INSTALLATION

- A. Install windows in accordance with manufacturer's instructions.
- B. Attach window frame and shims to perimeter opening to accommodate construction tolerances and other irregularities.
- C. Align window plumb and level, free of warp or twist. Maintain dimensional tolerances and alignment with adjacent work.
- D. Provide thermal isolation where components penetrate or disrupt building insulation. Pack fibrous insulation in shim spaces at perimeter of assembly to maintain continuity of thermal barrier.

3.03 TOLERANCES

- A. Maximum Variation from Level or Plumb: 1/8" inch per 3 ft non-cumulative or 1/4 inch per 10 ft , whichever is less.

3.04 FIELD QUALITY CONTROL

- A. See Section 01 4000 - Quality Requirements for independent field testing and inspection requirements, and requirements for monitoring quality of specified product installations.
- B. Provide field testing of installed wood windows by independent laboratory in accordance with AAMA 502 and AAMA/WDMA/CSA 101/I.S.2/A440 during construction process and before installation of interior finishes.
 1. Perform tests on three individual windows in designated locations as directed by Architect .
 2. Field test for water penetration in accordance with ASTM E1105 using Procedure B - cyclic static air pressure difference; test pressure shall not be less than 1.9 psf.
 3. Field test for air leakage in accordance with ASTM E783 with uniform static air pressure difference of 6.27 psf.
 - a. Maximum allowable rate of air leakage is 1.5 times specified rate of 0.10 cfm/sq ft as indicated in AAMA/WDMA/CSA 101/I.S.2/A440.

C. Repair or replace fenestration components that have failed designated field testing, and retest to verify performance complies with specified requirements.

3.05 CLEANING

A. Refer to Section 01 7419 - Waste Management and Disposal for additional requirements.

B. Remove protective material from factory finished surfaces.

C. Wash surfaces by method recommended and acceptable to window manufacturer; rinse and wipe surfaces clean.

D. Remove excess glazing sealant by moderate use of mineral spirits or other solvent acceptable to sealant manufacturer.

SECTION 08 5200 WOOD WINDOWS

PART 1 GENERAL

1.01 SECTION INCLUDES

- A. Factory-fabricated wood windows.

1.02 RELATED REQUIREMENTS

- A. Section 06 1000 - Rough Carpentry: Rough opening framing.
- B. Section 07 2500 - Weather Barriers: Sealing frames to water-resistive barrier installed on adjacent construction.
- C. Section 07 6200 - Sheet Metal Flashing and Trim

1.03 REFERENCE STANDARDS

- A. AAMA/WDMA/CSA 101/I.S.2/A440 - North American Fenestration Standard/Specification for Windows, Doors, and Skylights; 2022.
- B. AAMA 502 - Voluntary Specification for Field Testing of Newly Installed Fenestration Products; 2021.
- C. ASHRAE Std 90.1 I-P - Energy Standard for Buildings Except Low-Rise Residential Buildings; Most Recent Edition Adopted by Authority Having Jurisdiction, Including All Applicable Amendments and Supplements.
- D. ASTM E783 - Standard Test Method for Field Measurement of Air Leakage Through Installed Exterior Windows and Doors; 2002 (Reapproved 2018).
- E. ASTM E1105 - Standard Test Method for Field Determination of Water Penetration of Installed Exterior Windows, Skylights, Doors, and Curtain Walls, by Uniform or Cyclic Static Air Pressure Difference; 2015 (Reapproved 2023).
- F. ASTM E1996 - Standard Specification for Performance of Exterior Windows, Curtain Walls, Doors, and Impact Protective Systems Impacted by Windborne Debris in Hurricanes; 2023.
- G. AWMAC/WI (NAAWS) - North American Architectural Woodwork Standards; 2021, with Errata.

1.04 ADMINISTRATIVE REQUIREMENTS

- A. Preinstallation Meeting: Convene two weeks before starting work of this section.

1.05 SUBMITTALS

- A. See Section 01 3300 - Submittal Procedures for submittal procedures.
- B. Product Data: Show component dimensions, anchorage and fasteners, glass, and internal drainage details.
- C. Shop Drawings: Indicate opening dimensions, framed opening tolerances, affected related work, and installation requirements.
- D. Manufacturer's Certificate: Certify that products furnished meet or exceed specified requirements.
- E. Test Reports: Prior to submitting shop drawings or starting fabrication, submit test report(s) by independent testing agency showing compliance with performance requirements in excess of those prescribed by specified grade.
- F. Field Quality Control Submittals: Report of field testing for water penetration and air leakage.
- G. Installer's qualification statement.

1.06 QUALITY ASSURANCE

- A. Manufacturer Qualifications: Company specializing in manufacturing products specified in this section with not less than three years of documented experience.
- B. Installer Qualifications: Company specializing in performing work of the type specified and with at least three years of documented experience.

1.07 DELIVERY, STORAGE, AND HANDLING

- A. Protect factory finished surfaces with wrapping. Do not use adhesive papers or sprayed coatings that bond when exposed to sunlight or weather.

1.08 WARRANTY

- A. See Section 01 7700 - Closeout Procedures for additional warranty requirements.
- B. Manufacturer Warranty: Provide 5-year manufacturer warranty for insulated glass units against seal failure, interpane dusting or misting, and replacement of same. Complete forms in Owner's name and register with manufacturer.
- C. Manufacturer Warranty: Provide 2-year manufacturer warranty against defects listed. Complete forms in Owner's name and register with manufacturer or warrantor.
 - 1. Degradation of color finish.
 - 2. Delamination or separation of finish cladding from window member.

PART 2 PRODUCTS

2.01 MANUFACTURERS

- A. Aluminum Clad Wood Windows:
 - 1. Pella Corporation (Basis of Design); Pella Lifestyle Series:
www.pellacommercial.com/#sle.
 - 2. Substitutions: See Section 01 2500 - Substitution Procedures.

2.02 WOOD WINDOWS

- A. Wood Windows: Wood frame and sash, factory fabricated and assembled.
 - 1. Exterior Finish: Metal clad, painted.
 - a. Exterior Color: [Black].
 - 2. Interior Finish: Factory finish stain, as selected by Architect from full product range of options.
 - 3. Configuration: As indicated on drawings.
 - 4. Window Product Types: FW - Fixed window, in accordance with AAMA/WDMA/CSA 101/I.S.2/A440.
 - 5. Factory glazed; dry glazing method.
 - 6. Wood Species: Clear pine, preservative treated using treatment type suitable for required finish. Factory Finished
 - 7. Metal Cladding: Formed aluminum, factory finished, factory fit to profile of wood members.
 - 8. Glazing: Triple glazed, clear, Low-E coated, argon filled, with glass thicknesses as recommended by manufacturer for specified wind conditions.
 - a. Integral Blind Option: Raise and lower blinds between the glass
 - 9. Weather Stop Flange: Continuous at perimeter of unit.
 - 10. Clearances and Shim Spacing: Minimum required for installation and dynamic movement of perimeter seal.
 - 11. Fasteners: Concealed from view.
 - 12. Internal Drainage of Glazing Spaces to Exterior: Weep holes.

2.03 PERFORMANCE REQUIREMENTS

- A. Comply with AAMA/WDMA/CSA 101/I.S.2/A440 requirements for the specific window type in accordance with the following:
 - 1. Performance Class (PC): CW.
- B. Design Pressure (DP): In accordance with applicable codes.
- C. Fenestration Assembly Thermal transmittance (U-value): Comply with ASHRAE Std 90.1 I-P for building envelope requirements for applicable climate zone.

PART 3 EXECUTION

3.01 EXAMINATION

- A. Verify wall openings and adjoining water-resistive barrier materials are ready to receive wood windows; see Section 07 2500.

3.02 INSTALLATION

- A. Install windows in accordance with manufacturer's instructions.
- B. Attach window frame and shims to perimeter opening to accommodate construction tolerances and other irregularities.
- C. Align window plumb and level, free of warp or twist. Maintain dimensional tolerances and alignment with adjacent work.
- D. Provide thermal isolation where components penetrate or disrupt building insulation. Pack fibrous insulation in shim spaces at perimeter of assembly to maintain continuity of thermal barrier.

3.03 TOLERANCES

- A. Maximum Variation from Level or Plumb: 1/8" inch per 3 ft non-cumulative or 1/4 inch per 10 ft, whichever is less.

3.04 FIELD QUALITY CONTROL

- A. See Section 01 4000 - Quality Requirements for independent field testing and inspection requirements, and requirements for monitoring quality of specified product installations.
- B. Provide field testing of installed wood windows by independent laboratory in accordance with AAMA 502 and AAMA/WDMA/CSA 101/I.S.2/A440 during construction process and before installation of interior finishes.
 - 1. Perform tests on three individual windows in designated locations as directed by Architect.
 - 2. Field test for water penetration in accordance with ASTM E1105 using Procedure B - cyclic static air pressure difference; test pressure shall not be less than 1.9 psf.
 - 3. Field test for air leakage in accordance with ASTM E783 with uniform static air pressure difference of 6.27 psf.
 - a. Maximum allowable rate of air leakage is 1.5 times specified rate of 0.10 cfm/sq ft as indicated in AAMA/WDMA/CSA 101/I.S.2/A440.
- C. Repair or replace fenestration components that have failed designated field testing, and retest to verify performance complies with specified requirements.

3.05 CLEANING

- A. Refer to Section 01 7419 - Waste Management and Disposal for additional requirements.
- B. Remove protective material from factory finished surfaces.
- C. Wash surfaces by method recommended and acceptable to window manufacturer; rinse and wipe surfaces clean.
- D. Remove excess glazing sealant by moderate use of mineral spirits or other solvent acceptable to sealant manufacturer.

END OF SECTION

GENERAL SHEET NOTES

- A. CONSTRUCT WALKS, LANDINGS, AND PATIOS TO BE FLUSH WITH FINISH FLOOR AT BUILDING ENTRANCES/EXITS AND TO SLOPE AWAY FROM BUILDING
- B. PROVIDE FACTORY FINISH FOR ALL EXPOSED FLASHING, U.N.O.
- C. COLOR MATCH ALL VENTS, FLASHING, MISC MATERIALS, ETC TO ADJACENT BUILDING COLOR, WHETHER FACTORY FINISH OR FIELD PAINTED, U. N. O.
- D. DIMENSIONS ARE TO FACE OF STUD/CMU, OR TO GRID LINE - TYP, EXCEPT, WHERE CENTERLINE IS USED.
- E. PROVIDE SEALANT AT ALL FINISH PENETRATIONS.
- F. REFER TO DOOR SCHEDULES AND WINDOW DIAGRAM FOR DOOR, FRAME, AND WINDOW TYPES AND SIZES

REFERENCE KEYNOTES

SHEET KEYNOTES

SYMBLE LEGEND

- REFER TO SHEET AED01 FOR ADDITIONAL SYMBOLS
- ARCHITECTURAL REVEAL
SEE DETAIL ... AR
 - CONTROL JOINT SEE
DETAIL ... CJ
 - CORNICE
FC
 - FLUTING
FF
 - KEY
FK
 - MECHANICAL GRILL
 - OVERFLOW DRAIN SPOUT
SEE DETAILS 1.2,3/AE502



1 OVERALL NORTH ELEVATION
1/16" = 1'-0"



2 OVERALL EAST ELEVATION
1/16" = 1'-0"

IDAHO DIVISION OF VETERANS SERVICES
IDAHO STATE VETERANS HOME - BOISE
 320 Collins Road, Boise, Idaho 83702
 DPW PROJECT NO.: 19607

CLIENT CONTACT
Idaho Division of Veterans Services
351 N. Collins Rd.
Boise, Idaho 83702

208-780-1320 T
208-780-1301 F

OWP PROJECT NO. DATE OF ISSUE
2022-009 02-23-2024

REVISIONS	
DELTA	DESCRIPTION DATE

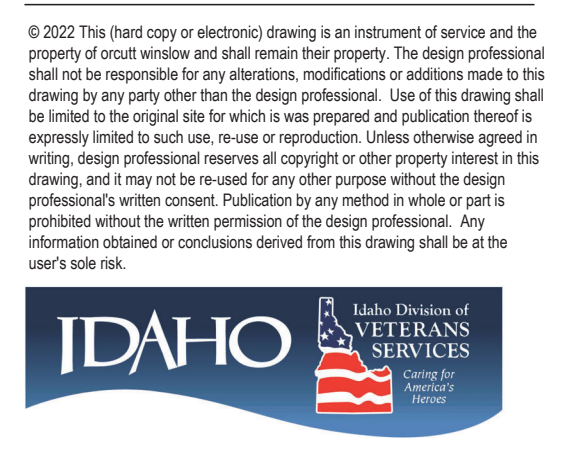
PROJECT TEAM DRAWN BY
SL

PROJECT PHASE
100% Construction Documents (VA)

SHEET CONTENTS
OVERALL BUILDING
ELEVATIONS-PH2

SHEET NO.

AE200



GENERAL SHEET NOTES

- CONSTRUCT WALKS, LANDINGS, AND PATIOS TO BE FLUSH WITH FINISH FLOOR AT BUILDING ENTRANCES/EXITS AND TO SLOPE AWAY FROM BUILDING
- PROVIDE FACTORY FINISH FOR ALL EXPOSED FLASHING, U.N.O.
- COLOR MATCH ALL VENTS, FLASHING, MISC MATERIALS, ETC TO ADJACENT BUILDING COLOR, WHETHER FACTORY FINISH OR FIELD PAINTED, U. N. O.
- DIMENSIONS ARE TO FACE OF STUD/CMU, OR TO GRID LINE - TYP. EXCEPT, WHERE CENTERLINE IS USED.
- PROVIDE SEALANT AT ALL FINISH PENETRATIONS.
- REFER TO DOOR SCHEDULES AND WINDOW DIAGRAMS FOR DOOR, FRAME, AND WINDOW TYPES AND SIZES

REFERENCE KEYNOTES

06 8200.B	30" DEEP FRP CORNICE (PROFILE A)
06 8200.D	18" DEEP FRP CORNICE (PROFILE C)
06 8200.H	15'-10" FLUTED FRP PANEL (FF3)
06 8200.K	13'-10" FLUTED FRP PANEL (FF4)
07 2400.G	ACRYLIC STUCCO FINISH
26 0000.A	LIGHT FIXTURE. REFER TO ELECTRICAL

SHEET KEYNOTES

4	FRP CORNICE PANEL WITH A RECESSED ARCHED KEY
5	3" WIDE ARCHITECTURAL REVEAL
6	STEPPED CORNER - FINISH TO MATCH ADJACENT WALL
7	FRP PANEL ATTACHED TO METAL STUDS TO CREATE THE CENTER KEY EDGE
9	RECESSED NICHE WITH UP-THROW BUILDING LIGHT

SYMBLE LEGEND

REFER TO SHEET AED01 FOR ADDITIONAL SYMBOLS

ARCHITECTURAL REVEAL	AR
CONTROL JOINT SEE DETAIL ...	CJ
CORNICE	FC
FLUTING	FF
KEY	FK
MECHANICAL GRILL	
OVERFLOW DRAIN SPOUT	

SEE DETAILS 1.2,3/AE502

ELEVATION MATERIALS LEGEND

M1	SOLID CMU VENEER MFR: BASALITE FINISH: GROUND FACE COLOR: 615 PATTERN: STACKED BOND
M2	CEMENT BOARD SYSTEM MFR: SENERGY FINISH: FINE COLOR: HORSERADISH (PPG1088-1)
M3	FRP FLUTED PANELS MFR: ARCHITECTURAL MALL, INC. COLOR: HORSERADISH (PPG1088-1)
M4	FRP CAP MFR: ARCHITECTURAL MALL, INC. COLOR: HORSERADISH (PPG1088-1)
M5	FRP CORNICE MFR: ARCHITECTURAL MALL, INC. COLOR: HORSERADISH (PPG1088-1)
M6	ALUMINUM STOREFRONT SYSTEM MFR: ARCADIA COLOR: MATT BLACK FINISH: PAINTED GLASS: CLEAR LOW-E 70 LOUVER: (SEE SPECIFICATIONS)
M7	ALUMINUM CLAD WOOD WINDOWS MFR: PELLA SERIES: LIFESTYLE COLOR: BLACK
M8	METAL FASCIA COLOR: BLACK
M9	METAL CANOPY COLOR: BLACK
M10	FRP DECORATIVE ELEMENT COLOR: HORSERADISH (PPG1088-1)

IDAHO DIVISION OF VETERANS SERVICES
IDAHO STATE VETERANS HOME - BOISE
320 Collins Road, Boise, Idaho 83702
DPW PROJECT NO.: 19607

CLIENT CONTACT
Idaho Division of Veterans Services
351 N. Collins Rd.
Boise, Idaho 83702
208-780-1320 T
208-780-1301 F
OWP PROJECT NO. DATE OF ISSUE
2022-009 02-23-2024

REVISIONS

DELTA	DESCRIPTION	DATE

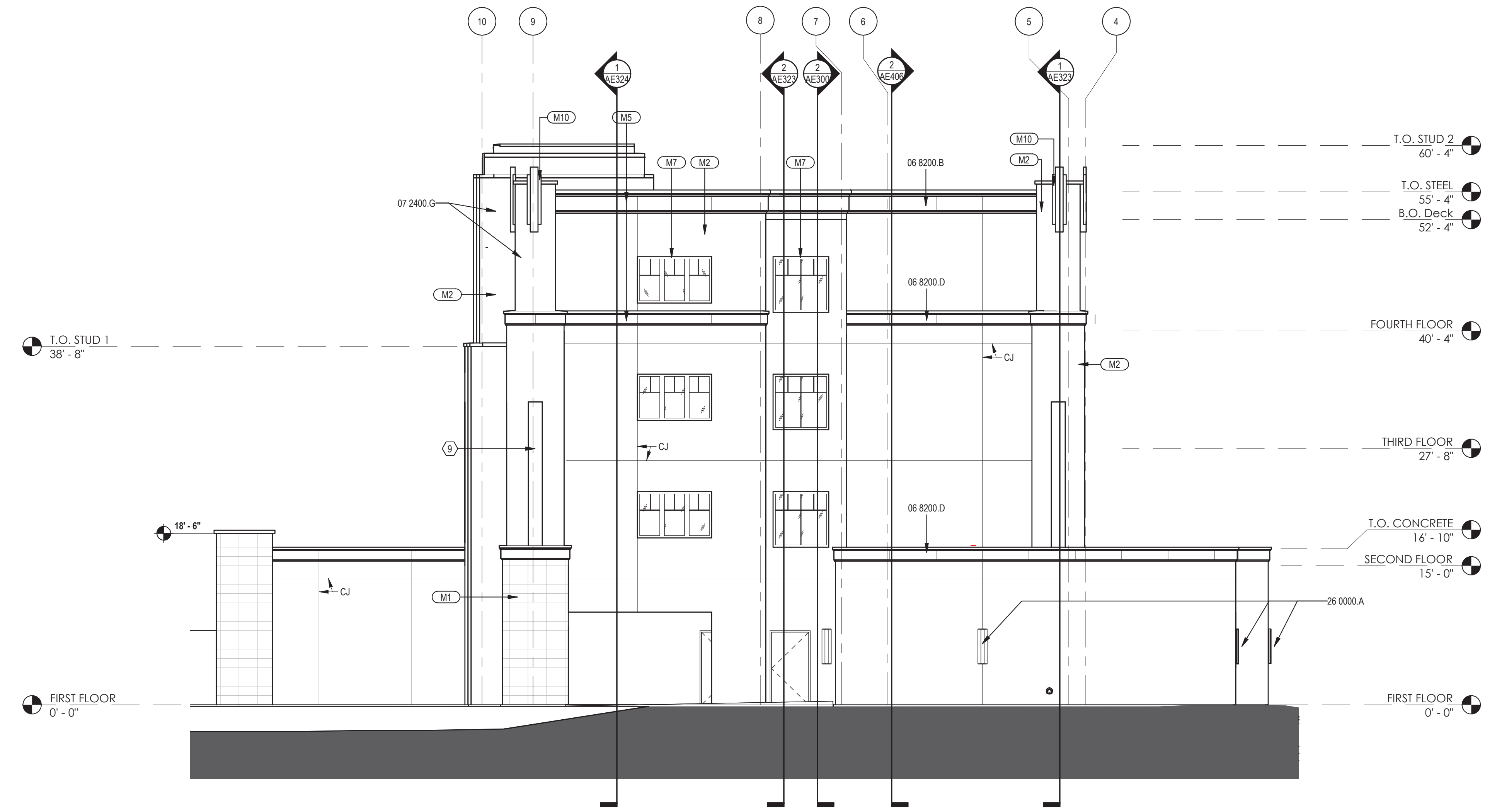
PROJECT TEAM DRAWN BY
SL

PROJECT PHASE
100% Construction Documents (VA)

SHEET CONTENTS
PARTIAL BUILDING
ELEVATIONS-PH2

SHEET NO.

AE213



1 SOUTH END ELEVATION PH 3
1/8" = 1'-0"



2 WEST ELEVATION
1/8" = 1'-0"

GENERAL SHEET NOTES

- A. ALL WINDOWS IN RESIDENT UNITS TO HAVE INTEGRAL BLINDS.
- B. DIMENSIONS INDICATE WINDOW OPENINGS. ROUGH OPENINGS WILL NEED TO BE ACCOUNTED FOR PER MANUFACTURER.
- C. ALL COMMON AREA AND OFFICE WINDOWS SHALL HAVE MECHOSHADE, URBANSHADE MANUAL SHADE SYSTEM, SHADE: SOHO COLLECTION 1600 SERIES, COLOR: T60, 3% OPEN, FASCIA TO MATCH SHADE.

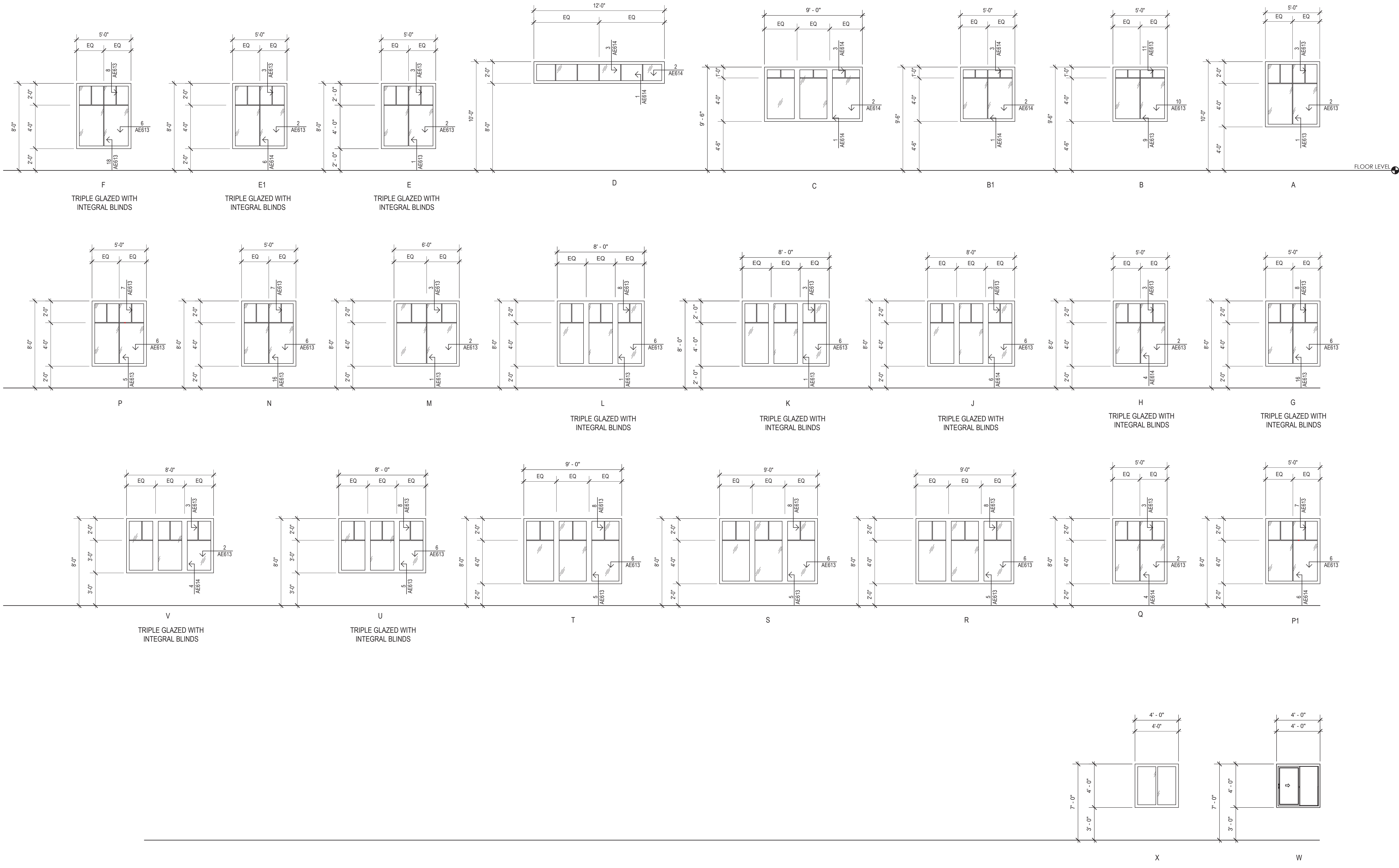
orcutt | winslow

2929 n central ave
eleventh floor
phoenix, az 85012
mail@owp.com
602.257.1764
www.owp.com

LICENSED ARCHITECT
AR-988513
Michael Gerardi
MICHAEL GERARDI
KOLEJKA
STATE OF IDAHO

Date Signed: 2/23/2024

© 2022 This sheet copy or electronic drawing is instrument of service and the property of orcutt | winslow and shall remain their property. The design professional shall not be responsible for any alterations, modifications or additions made to the drawing by any party other than the design professional. Use of this drawing shall be limited to the original use for which it was prepared and no portion thereof is expressly limited to such use, in whole or in part, without the express written consent of the design professional. Publication in any medium is prohibited without the written permission of the design professional. Any information obtained or conclusions derived from this drawing shall be at the user's sole risk.



IDAHO STATE VETERANS HOME - BOISE

IDAHO DIVISION OF VETERANS SERVICES

320 Collins Road, Boise, Idaho 83702
DPW PROJECT NO.: 19607

CLIENT CONTACT
Idaho Division of Veterans Services
351 N. Collins Rd.
Boise, Idaho 83702
208-780-1320 T
208-780-1301 F
OWP PROJECT NO. DATE OF ISSUE
2022-009 02-23-2024

REVISIONS	DATE
DELTA	DESCRIPTION

PROJECT TEAM DRAWN BY
SL

PROJECT PHASE
100% Construction Documents (VA)

SHEET CONTENTS
WINDOW
ELEVATIONS-PH2

SHEET NO.

AE604