

MEPNN Supplier Scouting Opportunity Synopsis

Section 1: General Information

Scouting Number	2024-306
Item to be Scouted	W-Beams with detailed cuts, slots, & holes
Days to be scouted	30
Response Due By	11/08/2024
Description	Projected usage is 1000-1500 units annually. Unit qtrs. in print.
Notify Requester Immediately	Yes
State item to be used in	Tennessee

Section 2: Technical Information

Type of supplier being sought	Manufacturer
Reason	2nd Supplier
Describe the manufacturing processes (elaborate to provide as much detail as possible)	Straight cuts Detailed cuts Chamfers Cut slots
Provide dimensions / size / tolerances / performance specifications for the item	<p>24119-F1 detail is made using W6x25 A992 beam it has straight cuts with 14 slots cut into 2 faces of the beam and is 480" in length. Tolerances are +/- 0.0625" Qty. of 8</p> <p>24119-F2 detail is made using W6x25 A992 beam it has straight cuts with 12 slots cut into one face of the beam and is 480" in length. Tolerances are +/- 0.0625" Qty. of 8</p> <p>24119-F4 detail is made using W6x25 A992 beam it has detailed cuts in the webbing with chamfers located on both ends and 10 slots cut into one face of the beam and is 89.60" in length. Tolerances are +/- 0.0625" Qty. of 8</p> <p>24119-F5 detail is made using W6x25 A992 beam it has detailed cuts in the webbing with chamfers located on both ends and 10 slots cut into one face of the beam and is 89.60" in length. Tolerances are +/- 0.0625" Qty. of 12</p> <p>24119-F3 detail is made using W6x25 A992 beam it has only straight cuts and is 96.5" in length. Tolerances are +/- 0.0625" Qty. of 24</p> <p>24119-F6 detail is made using W6x25 A992 beam it has only straight cuts and is 96.5" in length. Tolerances are +/- 0.0625" Qty. of 8</p> <p>Additional technical comments Materials will be used for Residential / Commercial structure elements.</p>
List required materials needed to make the product, including materials of product components	W6 x 25 (I-Beam) Material Grade: American Society for Testing and Materials (ASTM) A-992
Are there applicable certification requirements?	Yes
Details	American Society for Testing and Materials (ASTM) A992 material certs.
Are there applicable regulations?	No
Are there any other standards, requirements, etc.?	No

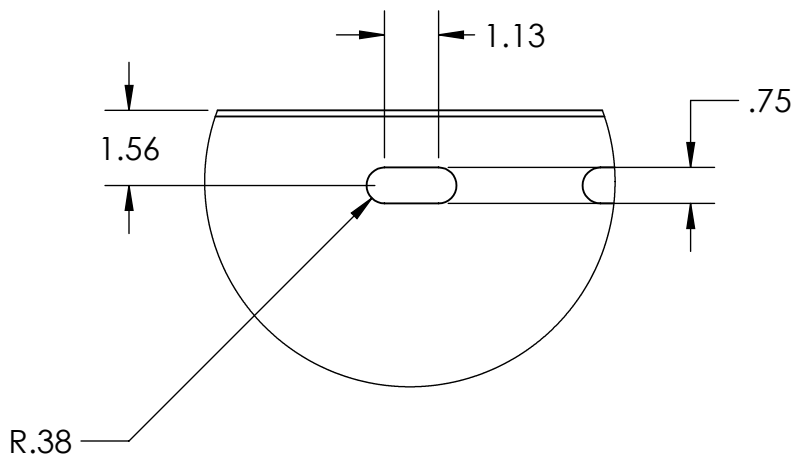
NAICS 1	332312 Fabricated structural metal manufacturing
NAICS 2	
Additional Technical Comments	

Section 4: Business Information

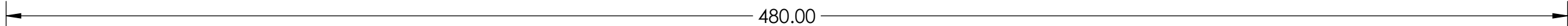
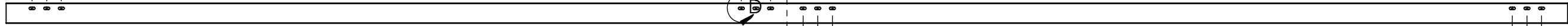
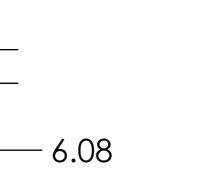
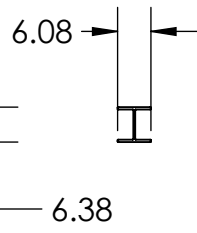
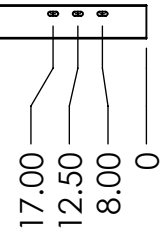
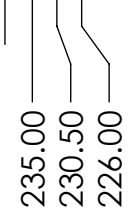
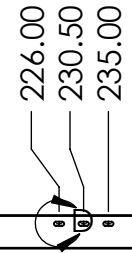
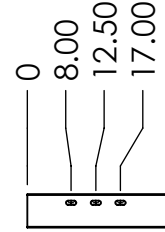
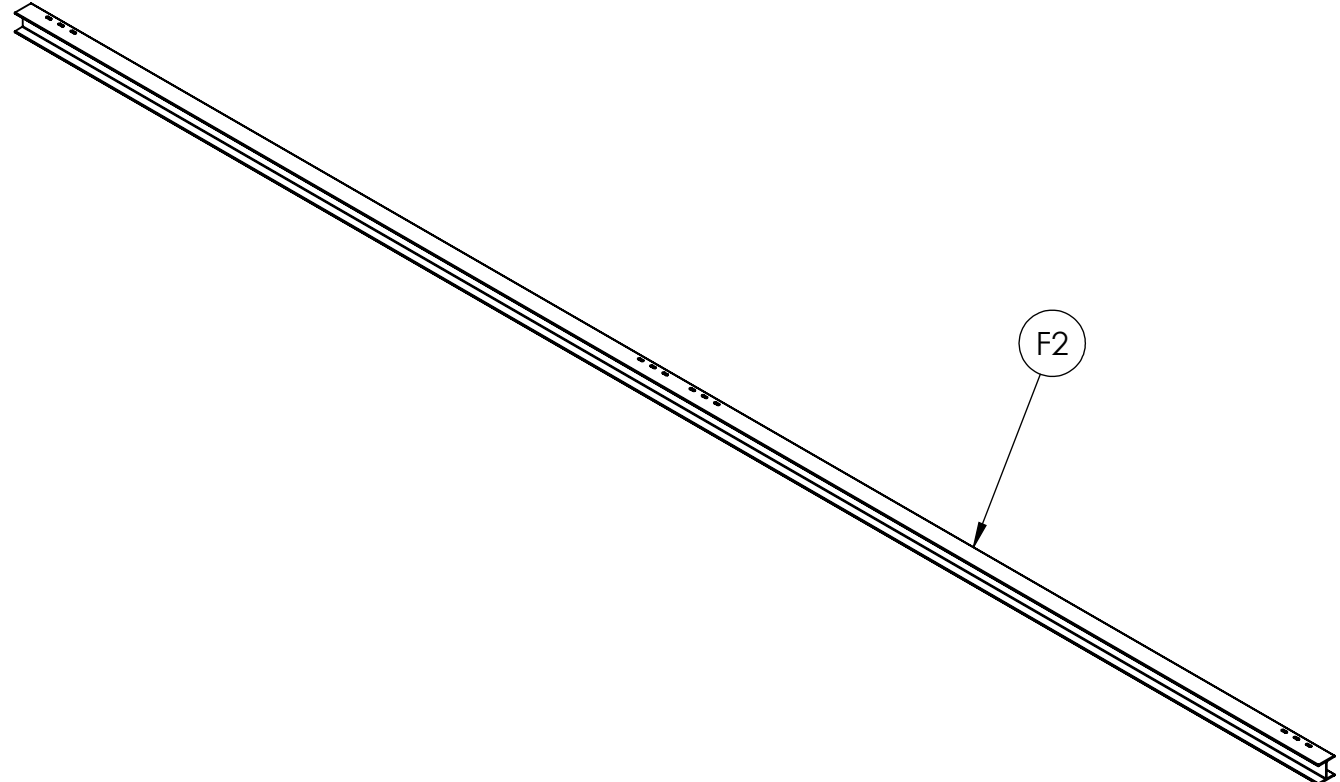
Estimated potential business volume	1 prototype unit and we have a projection of 500-1000 units the first year and increase to 1500-2000 units annually
Estimated target price / unit cost information (if unavailable explain)	Est. target price Estimated target price \$22,500.00-24,500.00 per unit
When is it needed by?	11/03/2024
Describe packaging requirements	No special packaging required
Where will this item be shipped?	Tennessee

Additional Comments

Is there other information you would like to include?	
---	--



DETAIL D
SCALE 1 : 4



UNLESS OTHERWISE SPECIFIED
DIMENSIONS ARE IN INCHES
TOLERANCES: +/- 1/16" or .0625"
Angular: +/- 1/2 degrees

MORRISON INDUSTRIES
211 PROGRESS BLVD.
MORRISON, TN, 37357
PH: 931-668-7909
www.morrisonindustries.com



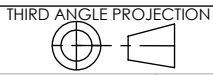
PROPRIETARY AND CONFIDENTIAL
THE INFORMATION CONTAINED IN THIS DRAWING IS THE SOLE PROPERTY OF MORRISON TOOL & FAB. ANY REPRODUCTION IN PART OR AS A WHOLE WITHOUT THE WRITTEN PERMISSION OF MORRISON TOOL & FAB IS PROHIBITED.

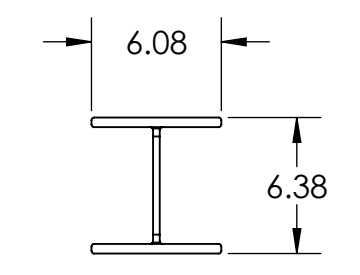
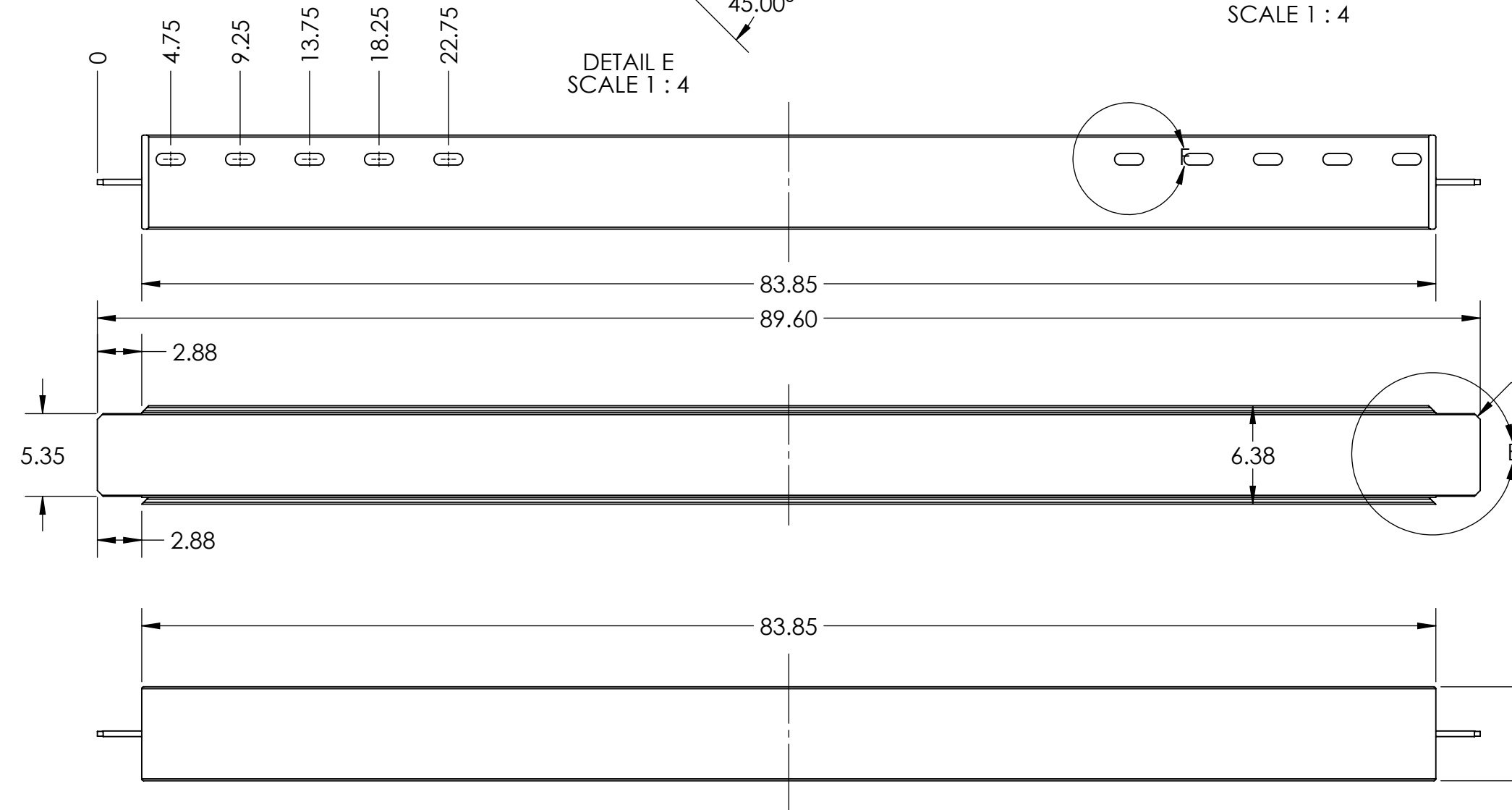
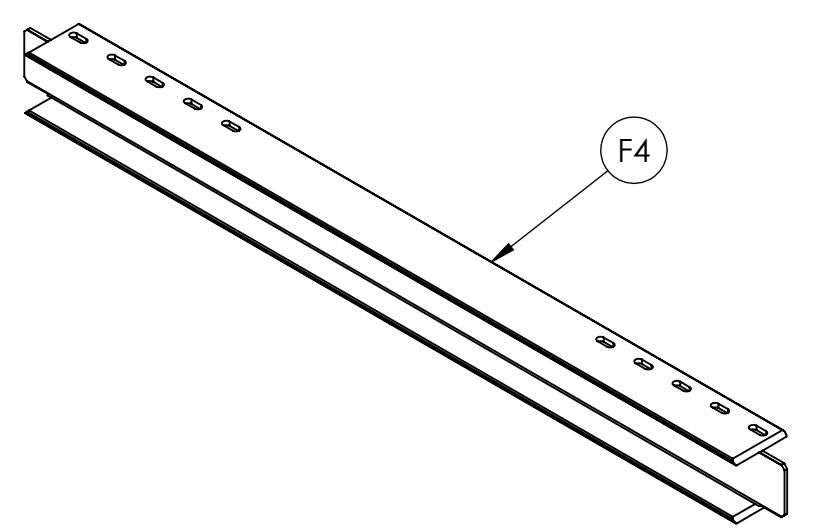
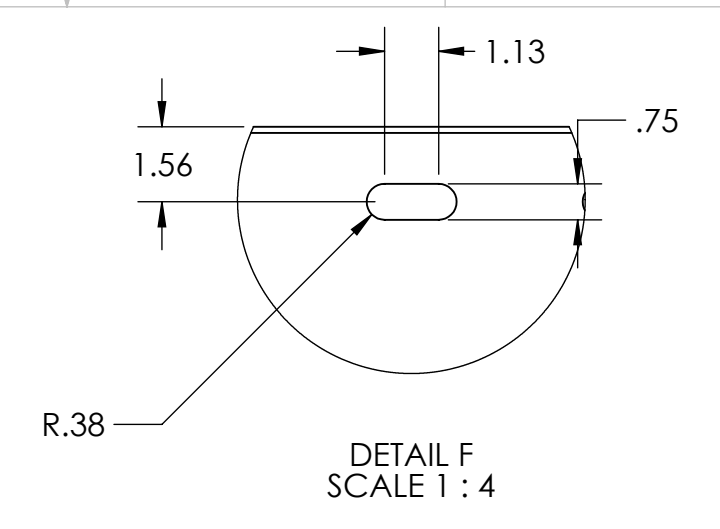
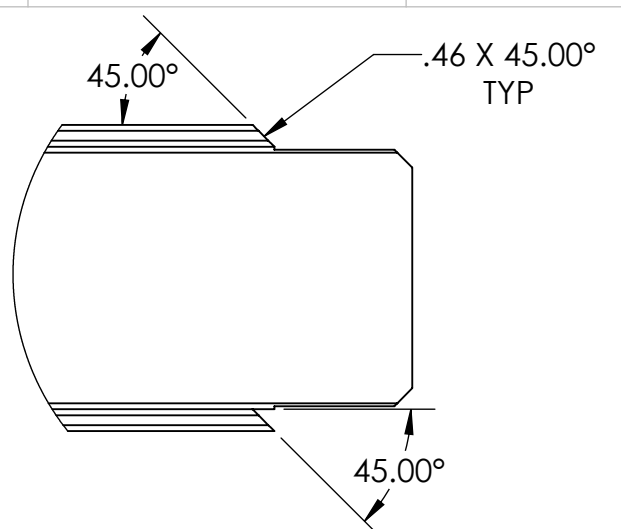
MATERIAL	W6X25 A992	
SIZE	480"	
DO NOT SCALE DRAWING		



DRAWN	JHT	9/10/24
CHECKED	---	---
APPROVED	---	---

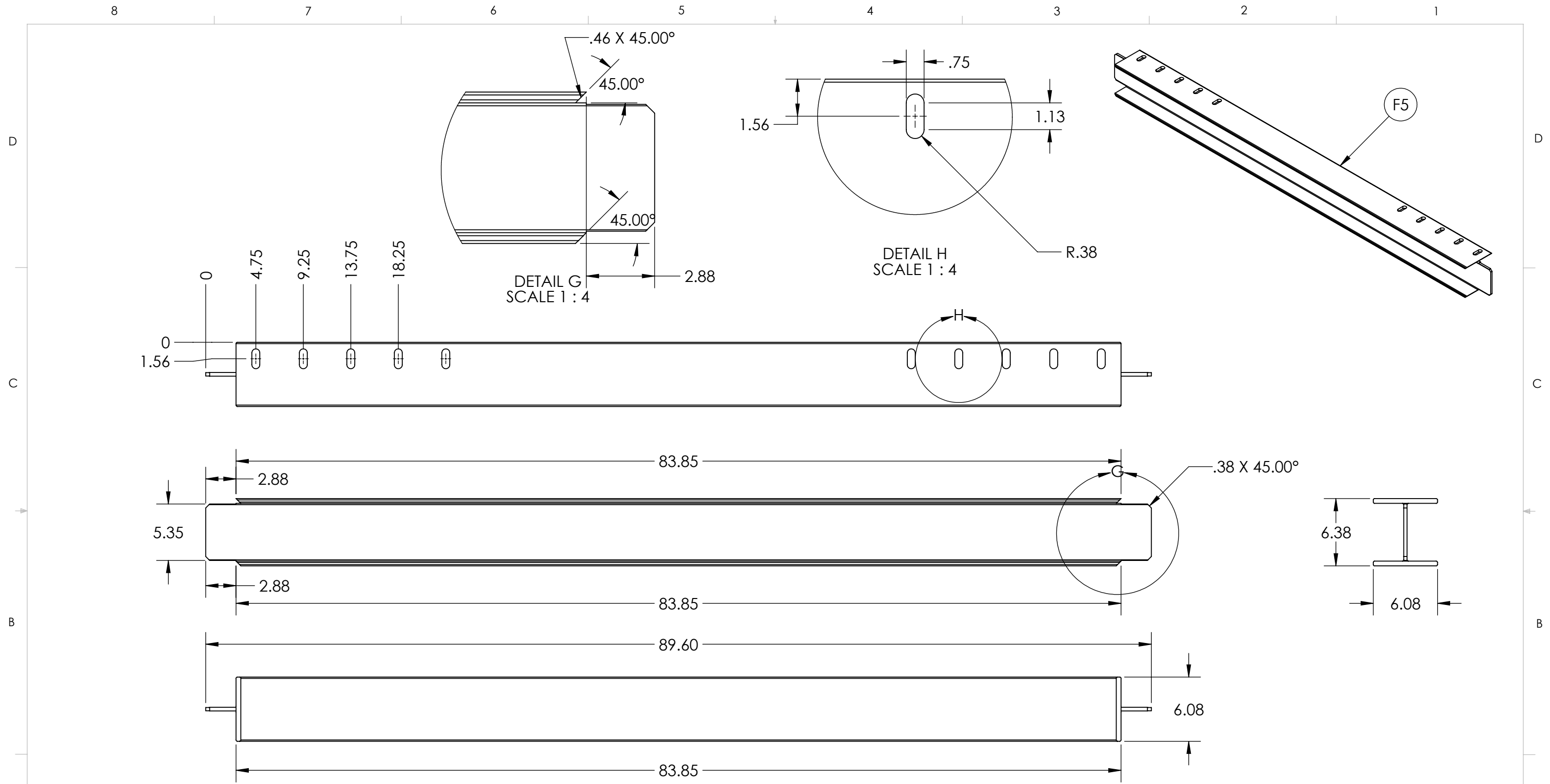
NAME	DATE	PART NAME:
PART NUMBER:	JOB NUMBER:	SCALE: VARIES

PART NAME:		SIDE TOP W-BEAM
PART NUMBER:		24119-F2
JOB NUMBER:		24119
SCALE: VARIES		SHEET 10 OF 14





UNLESS OTHERWISE SPECIFIED		MORRISON INDUSTRIES		 MORRISON INDUSTRIES			
DIMENSIONS ARE IN INCHES TOLERANCES: +/- 1/16" or .0625" Angular: +/- 1/2 degrees		211 PROGRESS BLVD. MORRISON, TN, 37357 PH: 931-668-7909 www.morrisonindustries.com					
MATERIAL	W6X25 A992	NAME	JHT	DATE	9/10/24	PART NAME:	END TOP W-BEAM
SIZE	89.60"	CHECKED	---	---	---	PART NUMBER:	24119-F4
DO NOT SCALE DRAWING	---	APPROVED	---	---	---	JOB NUMBER:	24119
PROPRIETARY AND CONFIDENTIAL THE INFORMATION CONTAINED IN THIS DRAWING IS THE SOLE PROPERTY OF MORRISON TOOL & FAB. ANY REPRODUCTION IN PART OR AS A WHOLE WITHOUT THE WRITTEN PERMISSION OF MORRISON TOOL & FAB IS PROHIBITED.		SCALE: VARIES		THIRD ANGLE PROJECTION 		SHEET 11 OF 14	



UNLESS OTHERWISE SPECIFIED
 DIMENSIONS ARE IN INCHES
 TOLERANCES: +/- 1/16" or .0625"
 Angular: +/- 1/2 degrees

MORRISON INDUSTRIES
 211 PROGRESS BLVD.
 MORRISON, TN, 37357
 PH: 931-668-7909
 www.morrisonindustries.com

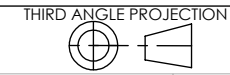


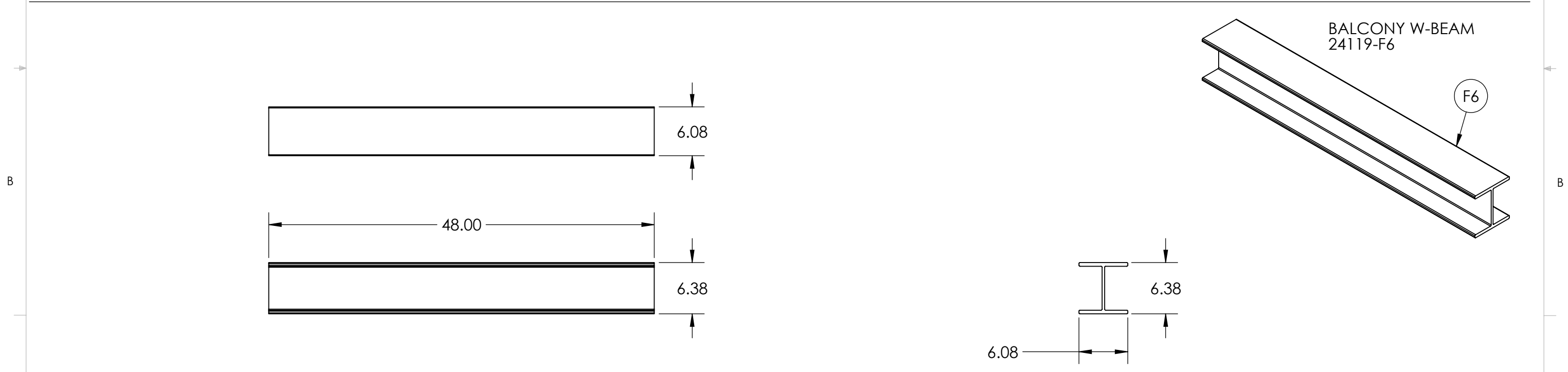
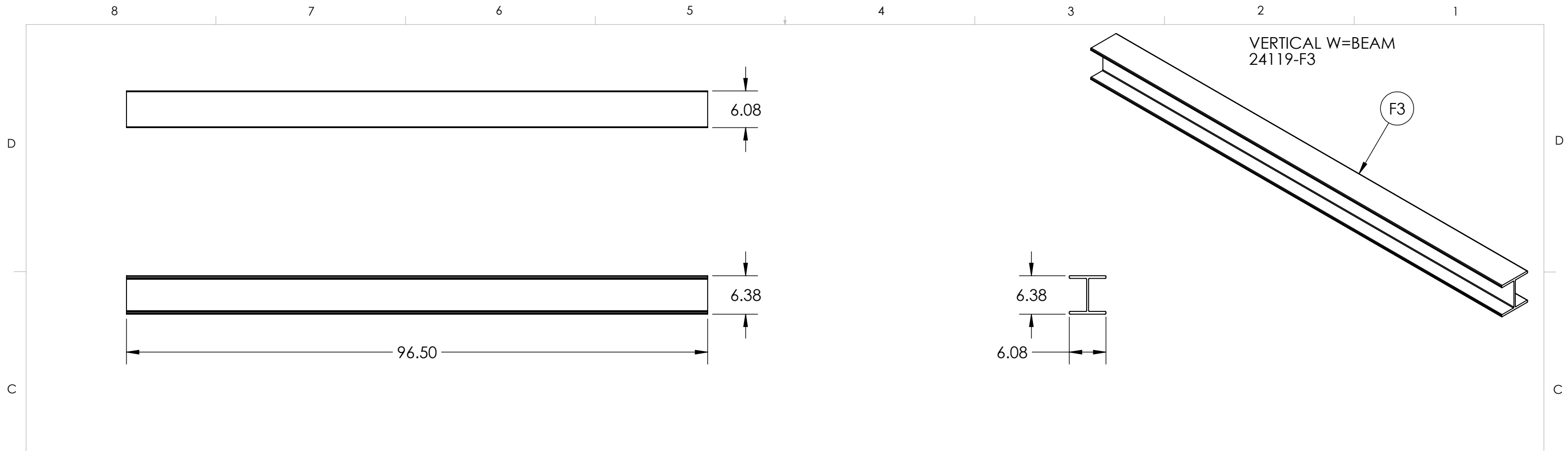
PROPRIETARY AND CONFIDENTIAL
 THE INFORMATION CONTAINED IN THIS DRAWING IS THE SOLE PROPERTY OF MORRISON TOOL & FAB. ANY REPRODUCTION IN PART OR AS A WHOLE WITHOUT THE WRITTEN PERMISSION OF MORRISON TOOL & FAB IS PROHIBITED.



MATERIAL	W6X25 A992	
SIZE	89.60"	
DO NOT SCALE DRAWING		

DRAWN	JHT	9/10/24
CHECKED	---	---
APPROVED	---	---

NAME	DATE	PART NAME:
JHT	9/10/24	END BOTTOM W-BEAM
---	---	PART NUMBER:
---	---	24119-F5
---	---	JOB NUMBER:
---	---	24119
---	---	SCALE: VARIES





UNLESS OTHERWISE SPECIFIED		MORRISON INDUSTRIES 211 PROGRESS BLVD. MORRISON, TN, 37357 PH: 931-668-7909 www.morrisonindustries.com		 MORRISON INDUSTRIES	
DIMENSIONS ARE IN INCHES TOLERANCES: +/- 1/16" or .0625" Angular: +/- 1/2 degrees					
MATERIAL	W6X25 A992	NAME	DATE	PART NAME:	MULTI PARTS
		DRAWN	JHT 9/10/24	PART NUMBER:	24119-F3 & 24119-F6
		CHECKED	---	JOB NUMBER:	24119
		APPROVED	---	SCALE: VARIES	
PROPRIETARY AND CONFIDENTIAL THE INFORMATION CONTAINED IN THIS DRAWING IS THE SOLE PROPERTY OF MORRISON TOOL & FAB. ANY REPRODUCTION IN PART OR AS A WHOLE WITHOUT THE WRITTEN PERMISSION OF MORRISON TOOL & FAB IS PROHIBITED.		DO NOT SCALE DRAWING		THIRD ANGLE PROJECTION 	SHEET 13 OF 14

8 7 6 5 4 3 2 1

D

D

C

C

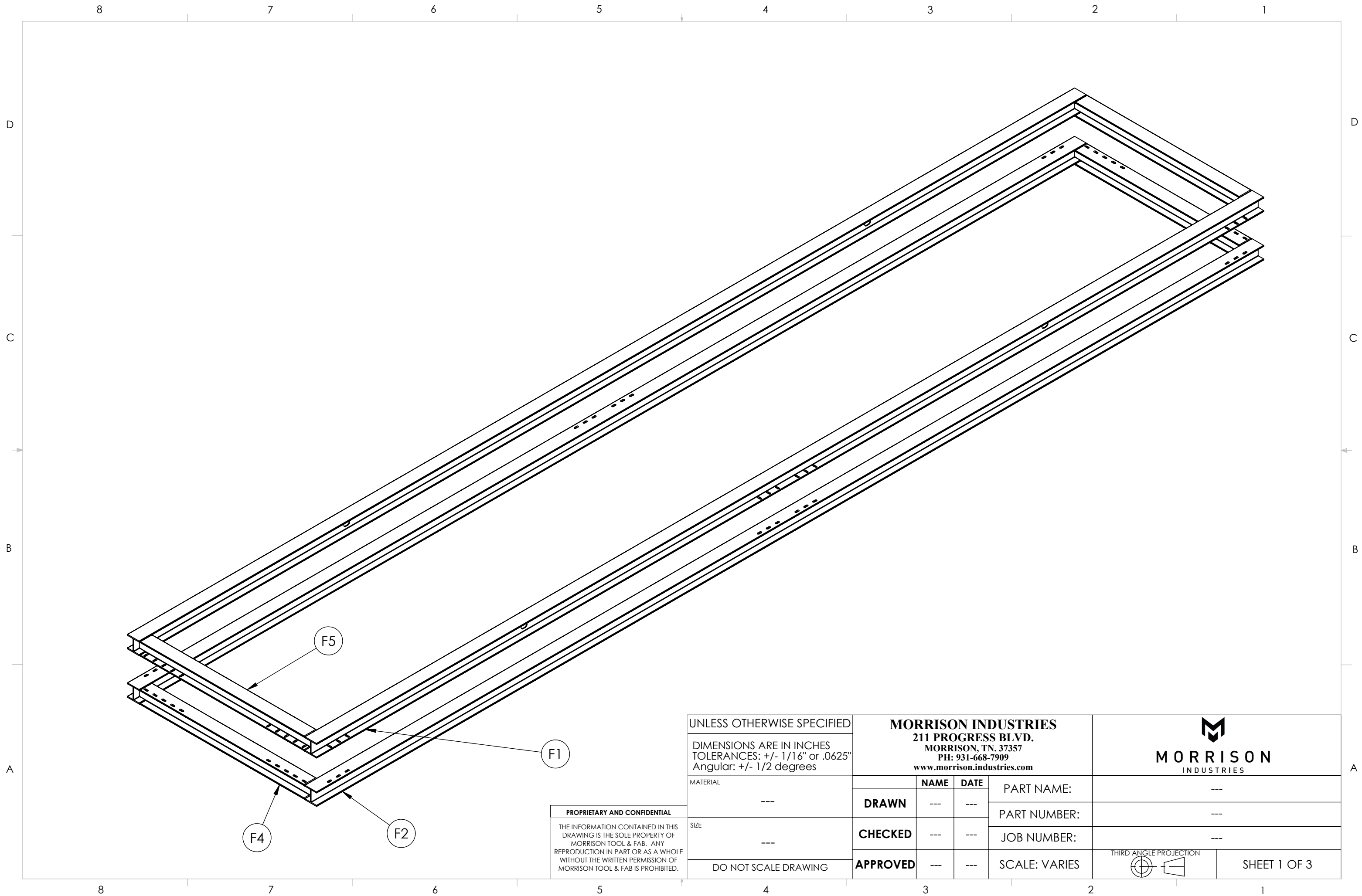
B

B

A

A

8 7 6 5 4 3 2 1



UNLESS OTHERWISE SPECIFIED
 DIMENSIONS ARE IN INCHES
 TOLERANCES: +/- 1/16" or .0625"
 Angular: +/- 1/2 degrees

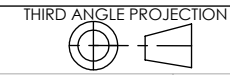
MORRISON INDUSTRIES
 211 PROGRESS BLVD.
 MORRISON, TN, 37357
 PH: 931-668-7909
 www.morrisonindustries.com



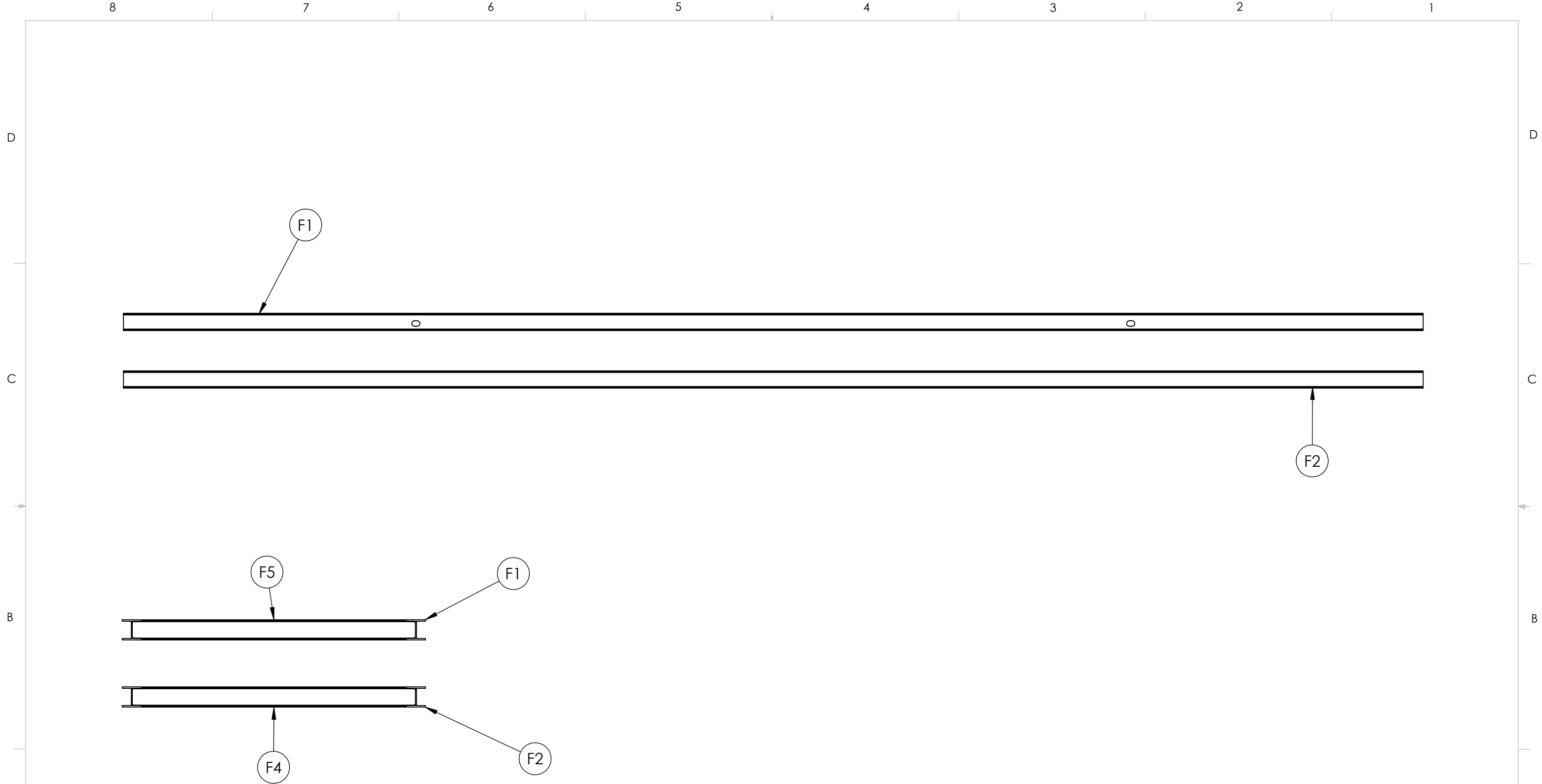
PROPRIETARY AND CONFIDENTIAL
 THE INFORMATION CONTAINED IN THIS
 DRAWING IS THE SOLE PROPERTY OF
 MORRISON TOOL & FAB. ANY
 REPRODUCTION IN PART OR AS A WHOLE
 WITHOUT THE WRITTEN PERMISSION OF
 MORRISON TOOL & FAB IS PROHIBITED.

MATERIAL	---	NAME	---	DATE	---
SIZE	---	DRAWN	---	CHECKED	---
DO NOT SCALE DRAWING	---	APPROVED	---	---	---

PART NAME:	---
PART NUMBER:	---
JOB NUMBER:	---
SCALE: VARIES	---



SHEET 1 OF 3



PROPRIETARY AND CONFIDENTIAL
 THE INFORMATION CONTAINED IN THIS DRAWING IS THE SOLE PROPERTY OF MORRISON TOOL & FAB. ANY REPRODUCTION IN PART OR AS A WHOLE WITHOUT THE WRITTEN PERMISSION OF MORRISON TOOL & FAB IS PROHIBITED.

UNLESS OTHERWISE SPECIFIED
 DIMENSIONS ARE IN INCHES
 TOLERANCES: +/- 1/16" or .0625"
 Angular: +/- 1/2 degrees

MATERIAL: ---

SIZE: ---

DO NOT SCALE DRAWING

MORRISON INDUSTRIES
 211 PROGRESS BLVD.
 MORRISON, TN, 37357
 PH: 931-668-7909
 www.morrisonindustries.com

	NAME	DATE	
DRAWN	---	---	PART NAME: ---
CHECKED	---	---	PART NUMBER: ---
APPROVED	---	---	JOB NUMBER: ---
			SCALE: VARIES

MORRISON INDUSTRIES

THIRD ANGLE PROJECTION

SHEET 2 OF 3

ITEM NO.	PART NO.	QTY.
F1	24119-F1	2
F5	24119-F5	2
F3	24119-F3	6
F2	24119-F2	2
F4	24119-F4	2

D

C

B

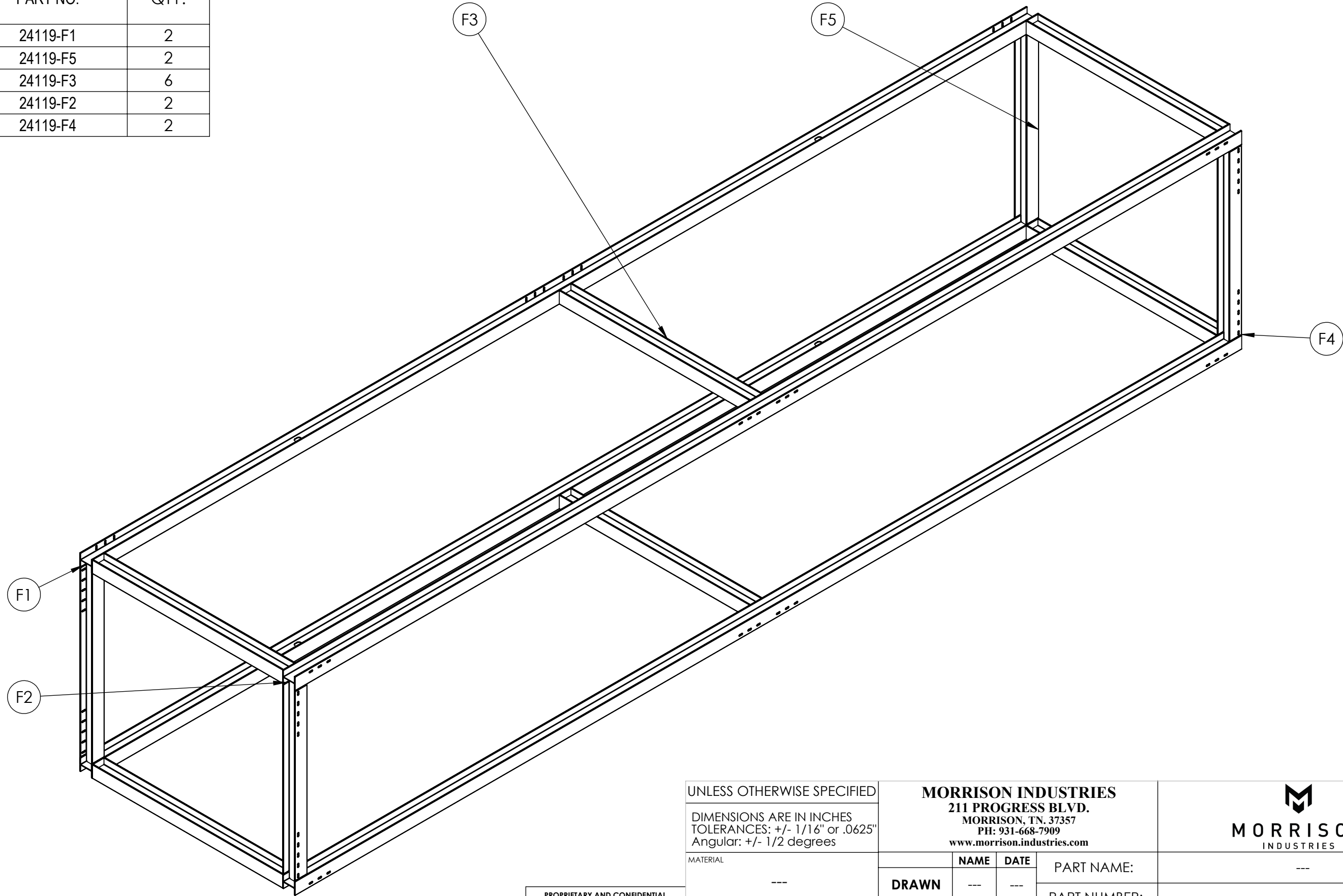
A

D

C

B

A




UNLESS OTHERWISE SPECIFIED
 DIMENSIONS ARE IN INCHES
 TOLERANCES: +/- 1/16" or .0625"
 Angular: +/- 1/2 degrees

MORRISON INDUSTRIES
 211 PROGRESS BLVD.
 MORRISON, TN, 37357
 PH: 931-668-7909
 www.morrisonindustries.com


MORRISON
 INDUSTRIES

MATERIAL	---	NAME	---	DATE	---	PART NAME:	---
SIZE	---	DRAWN	---	---	---	PART NUMBER:	---
DO NOT SCALE DRAWING	---	CHECKED	---	---	---	JOB NUMBER:	---
	---	APPROVED	---	---	---	SCALE: VARIES	---

	---	---	---	---	---	THIRD ANGLE PROJECTION	
							

THIRD ANGLE PROJECTION

SHEET 3 OF 3

PROPRIETARY AND CONFIDENTIAL
 THE INFORMATION CONTAINED IN THIS DRAWING IS THE SOLE PROPERTY OF MORRISON TOOL & FAB. ANY REPRODUCTION IN PART OR AS A WHOLE WITHOUT THE WRITTEN PERMISSION OF MORRISON TOOL & FAB IS PROHIBITED.

8

7

6

5

4

3

2

1