

# MEPNN Supplier Scouting Opportunity Synopsis

## Section 1: General Information

Scouting Number	2024-339
Item to be Scouted	Ball Y-Clevis
Days to be scouted	30
Response Due By	11/30/2024
Description	<p>Ball Y-clevises are used to attach ball and socket insulators to other associated hardware.</p> <p>The bent bolt in the Y-clevis section provides an additional point of articulation.</p> <p>Material:            Body-Galvanized Steel,            Bent Bolt &amp; Nut-Galvanized Steel,            Cotter Pin-Stainless Steel;</p> <p>For use with ANSI class 52-3 &amp; 52-5 insulators.</p>
Notify Requester Immediately	
State item to be used in	Kansas

## Section 2: Technical Information

Type of supplier being sought	Manufacturer
Reason	BABA
Describe the manufacturing processes (elaborate to provide as much detail as possible)	Including but limited to cutting and shaping, forging or casting, and machining.
Provide dimensions / size / tolerances / performance specifications for the item	<p>See attached files for dimensions and tolerances.</p> <p>Strength Rating - 30,000 lbs. minimum</p>
List required materials needed to make the product, including materials of product components	<p>Material - Galvanized Forged Steel            Material - Pin (Clevis) Galvanized Steel            Material - Pin (Cotter) Stainless Steel</p> <p>Hot Dip Galvanized per ASTM A-153</p>
Are there applicable certification requirements?	No
Are there applicable regulations?	Yes
Details	<p>Compliant with Build America, Buy America Act (BABA).</p> <p>Office of Management and Budget (OMB) Memorandum M-24-02</p>
Are there any other standards, requirements, etc.?	No
NAICS 1	332510 Hardware manufacturing
NAICS 2	
Additional Technical Comments	<p>Attach ball and socket insulators to other associated hardware</p> <p>For use with ANSI class 52-3 &amp; 52-5 insulators</p>

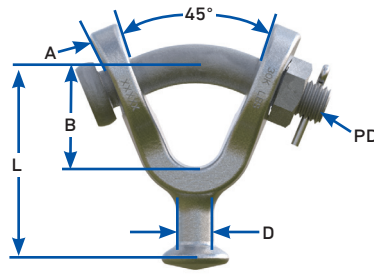
## Section 4: Business Information

Estimated potential business volume	3,600 items
Estimated target price / unit cost information (if unavailable explain)	\$27.00 per each
When is it needed by?	August of 2025
Describe packaging requirements	Boxed with estimated number of 20-30 per box and boxes placed on pallets
Where will this item be shipped?	Great Bend, Kansas

## Additional Comments

Is there other information you would like to include?	<p>Looking for BABA compliant material for a project that falls under the Department of Energy's Grid Resilience and Innovation Partnerships (GRIP) program.</p> <p>Point of Contact information for questions including BABA/Buy American compliance: Department of Energy / Grid Resilience and Innovation Partnerships (GRIP) program Brian Mollohan-Federal Project Manager, Logan Jordan – BABA Specialist Mollohan, Brian L. Brian.Mollohan@netl.doe.gov -or- Jordan, Logan T. Logan.Jordan@netl.doe.gov please copy scouting@nist.gov on all correspondence.</p> <p>Hubbell Power Systems, Maclean Power Systems, and Preformed Line Products have all replied that the Y-clevis Ball they supply is not BABA compliant.</p>
---	---

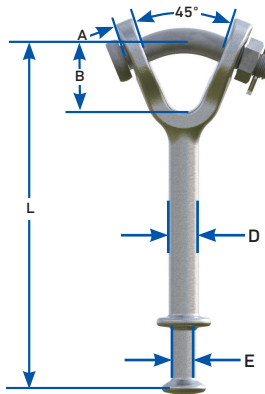
## BALL Y-CLEVIS



Component	Material
Body	Forged Steel, Hot Dip Galvanized
Hardware	Galvanized Steel
Cotter Pin	Stainless Steel

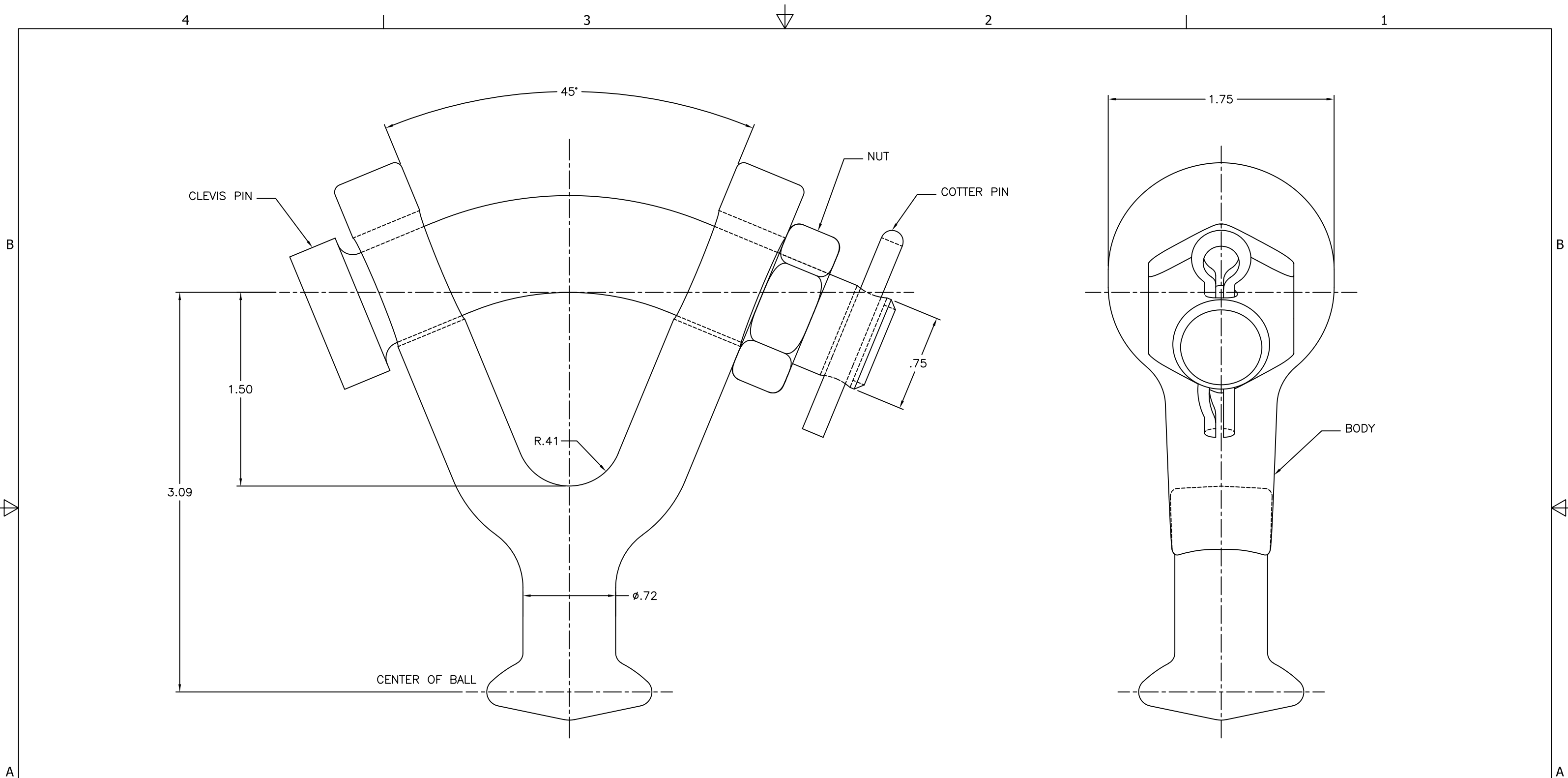
Catalog Number	General Dimensions					For Use with Insulators per ANSI Class Spec. C-29.2-71	Vertical Ultimate Strength	Weight
	in (mm)							
	A	B	D	L	PD		lbf (kN)	lb (kg)
BYC-30	5/8 (15)	1-9/16 (40)	11/16 (18)	3-5/8 (96)	3/4 (19)	52-3 and 52-5	30,000 (133)	2.2 (1.0)
BYC-50	3/4 (19)	1-5/8 (40)	7/8 (23)	4-7/16 (112)	7/8 (22)	52-8 and 52-11	50,000 (222)	4 (1.8)

## BALL Y-CLEVIS LINK



Component	Material
Body	Forged Steel, Hot Dip Galvanized
Hardware	Galvanized Steel
Cotter Pin	Stainless Steel

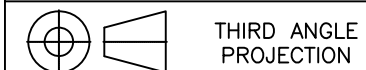
Catalog Number	General Dimensions						For Use with Insulators per ANSI Class Spec. C-29.2-71	Vertical Ultimate Strength	Weight
	in (mm)								
	A	B	D	E	L	PD		lbf (kN)	lb (kg)
BYCL-30	5/8 (15)	1-5/8 (42)	7/8 (22)	11/16 (18)	10 (253)	3/4 (19)	30,000 (133)	3.4 (1.5)	
BYCL-50	3/4 (19)	1-5/8 (40)	15/16 (24)	7/8 (23)	11-7/16 (290)	7/8 (22)	50,000 (222)	5.5 (2.5)	



**NOTES:**

1. MATERIAL: BODY - GALV. FORGED STEEL  
COTTER PIN - STAINLESS STEEL  
CLEVIS PIN & NUT - GALV. STEEL
2. HOT DIP GALVANIZED PER ASTM A153.
3. DIMENSIONS IN INCHES.
4. ULTIMATE STRENGTH: 30,000 LBS.
5. WEIGHT: 1.78 LBS. APPROX.

EC #	DATE	CHG BY	LEB CKD BY	PTB APPD BY
--	--	--	LEB	PTB
DESC OF DWG: DRAWING CREATED IN AUTOCAD				
<b>PRELIMINARY ONLY</b>				
REASON (S) FOR CHANGE: --				
DISPOSITION OF MAT'L: --				

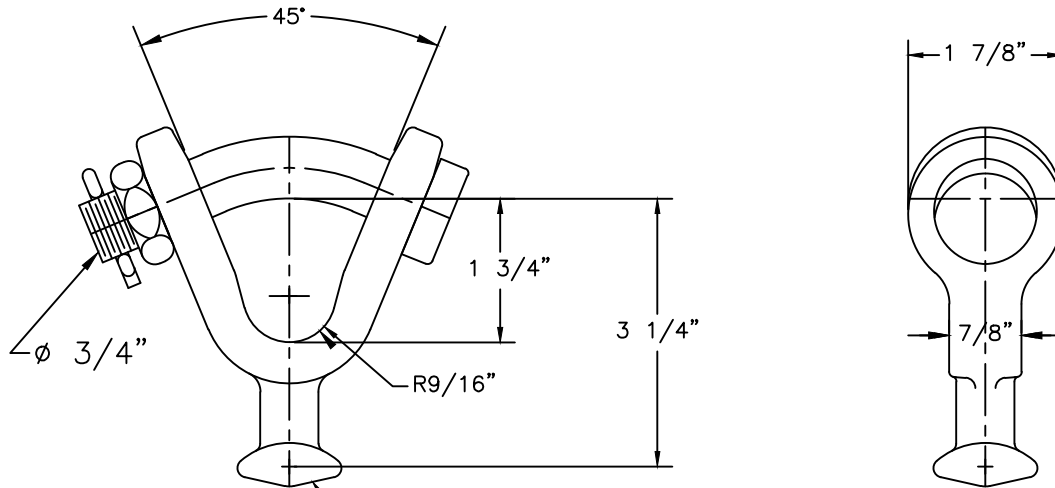


CONFIDENTIAL: THIS DRAWING AND ITS CONTENTS ARE CONFIDENTIAL AND THE EXCLUSIVE PROPERTY OF HUBBELL POWER SYSTEMS. NO PUBLICATION, DISTRIBUTION, OR COPIES MAY BE MADE WITHOUT THE WRITTEN CONSENT OF HUBBELL POWER SYSTEMS. HUBBELL POWER SYSTEMS UNPUBLISHED ALL RIGHTS RESERVED UNDER THE COPYRIGHT LAWS.

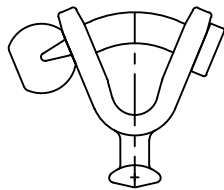


**HUBBELL® POWER SYSTEMS**

TITLE			
BALL Y-CLEVIS 30K LBS. ULT.			
CATALOG NUMBER: YBC30			
SIZE	DWG NO.	PART / ASSY NO.	REV
B	CUTSHEET	--	F
SCALE: NS	DRN BY: SV	DATE: 04/16/20	SHEET 1 OF 1



—BALL FITS INSULATOR  
CLASS ANSI 52-3 & 52-5



YCB-65A-S  
W/SPHERE NUT

ASSEMBLY NUMBER	RATED STRENGTH	CHARPY LEVEL	STANDARD PACK	WEIGHT
YCB-65A	35,000 LBS	N.A.	25	1.74
YCB-65A-CH1	35,000 LBS	1	25	1.74
YCB-65A-CH2	35,000 LBS	2	25	1.74

NOTES:

- MATERIAL — BODY: FORGED STEEL  
HARDWARE: HOT DIP GALVANIZED PER ASTM A-153  
COTTER PIN: AISI 302 STAINLESS STEEL
- MARKING: MPS, YCB-65A, 35K, & 52-5

CH1: CHARPY LEVEL 1 MEETS MIN ENERGY ABSORPTION OF 20J AT -20°C  
(15 FT-LBS AT -4°F)

CH2: CHARPY LEVEL 2 MEETS MIN ENERGY ABSORPTION OF 30J AT -30°C  
(22 FT-LBS AT -22°F)



**MACLEAN POWER SYSTEMS**  
A Maclean-fogg Company

YCB Y-CLEVIS BALL  
CATALOG NO: YCB-65A

NO.	DATE	DESCRIPTION	BY	CKD
2	11/05/18	ADDED CH2 ITEM AND NOTE	MBG	
1	2/15/18	WAS BC8792-1, ADDED CHARPY ITEMS	BS	

REVISIONS

DATE: 6/3/14	SCALE: NONE	NO.	R/2	SH.1
OWN: BS	BY: WCL	APR: WCL	AC-8792-1	OF 1