

MEPNN Supplier Scouting Opportunity Synopsis

Section 1: General Information

| | |
|--------------------|--|
| Scouting Number | 2025-353 |
| Item to be Scouted | Aluminum Extrusions |
| Days to be scouted | 30 |
| Response Due By | 10/17/2025 |
| Description | Looking for a supplier of two different extrusion profiles that will serve as pressure vessel components in our Nitrogen Generation system. Additionally, they have secondary processes including some tight tolerance machining and |

Section 2: Technical Information

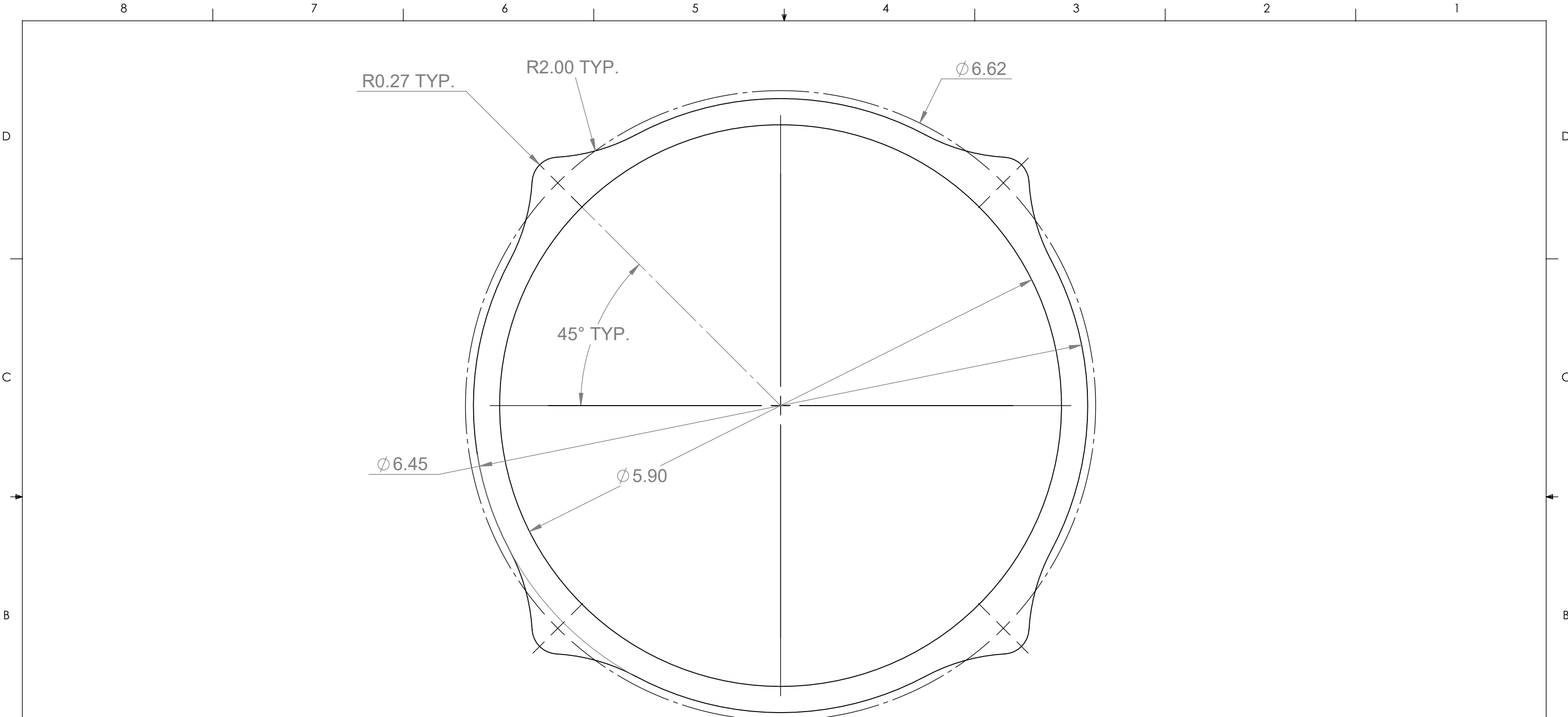
| | |
|---|--|
| Type of supplier being sought | Manufacturer |
| Reason | 2nd Supplier |
| Describe the manufacturing processes (elaborate to provide as much detail as possible) | Extrusion with cut to length, various holes with some being tapped, with relatively tight tolerances for use with gas seals such as O-rings. Additionally, the part is requested to be bright dipped and anodized. Bright dip may not be needed if surface finish requirements can be met. |
| Provide dimensions / size / tolerances / performance specifications for the item | Part one (based on 112255) is a tube about 6 inches in diameter. It will be cut to about 60 inch length and have features to allow for drill and tapping at the ends, and a portion of the diameter is bored to a tight tolerance for O-ring seals. Part two (based on 113100) is an "H shaped" manifold about 7 inches wide and 3 inches tall that will be cut to several different lengths and several holes added, some with tapping. Drawings can be provided. |
| List required materials needed to make the product, including materials of product components | The parts are specified with 6463-T5 Aluminum, but we are open to any grade that can produce the tolerancing and finishing needs |
| Are there applicable certification requirements? | No |
| Are there applicable regulations? | No |
| Are there any other standards, requirements, etc.? | No |
| Additional Technical Comments | It is preferred to get machining and anodizing either on site or close to the supplier, to limit shipment and logistic challenges. However, we look forward to all quoting opportunities. |

Section 4: Business Information

| | |
|---|---|
| Estimated potential business volume | These are for a new platform, so the volumes may have upside. The tube based on part 112255 is expected to be at least 2000 ft per year, coming in around 15k pounds. The H manifold based on part 113100 is expected to be at least 500 ft per year, coming in around 3k pounds. |
| Estimated target price / unit cost information (if unavailable explain) | We have similar tube shapes that are around \$28 per foot and H channels that are around \$21 per foot, final machined and finished price. We would be looking to be close to or better than that. However, we have no baseline quotes on these particular items. |
| When is it needed by? | Looking for 12-14 week delivery of final parts |
| Describe packaging requirements | Designed by supplier. Delivered undamaged. Specifics discussed in negotiation. |
| Where will this item be shipped? | Wilmington, NC |

Additional Comments

Is there other information you would like to include?

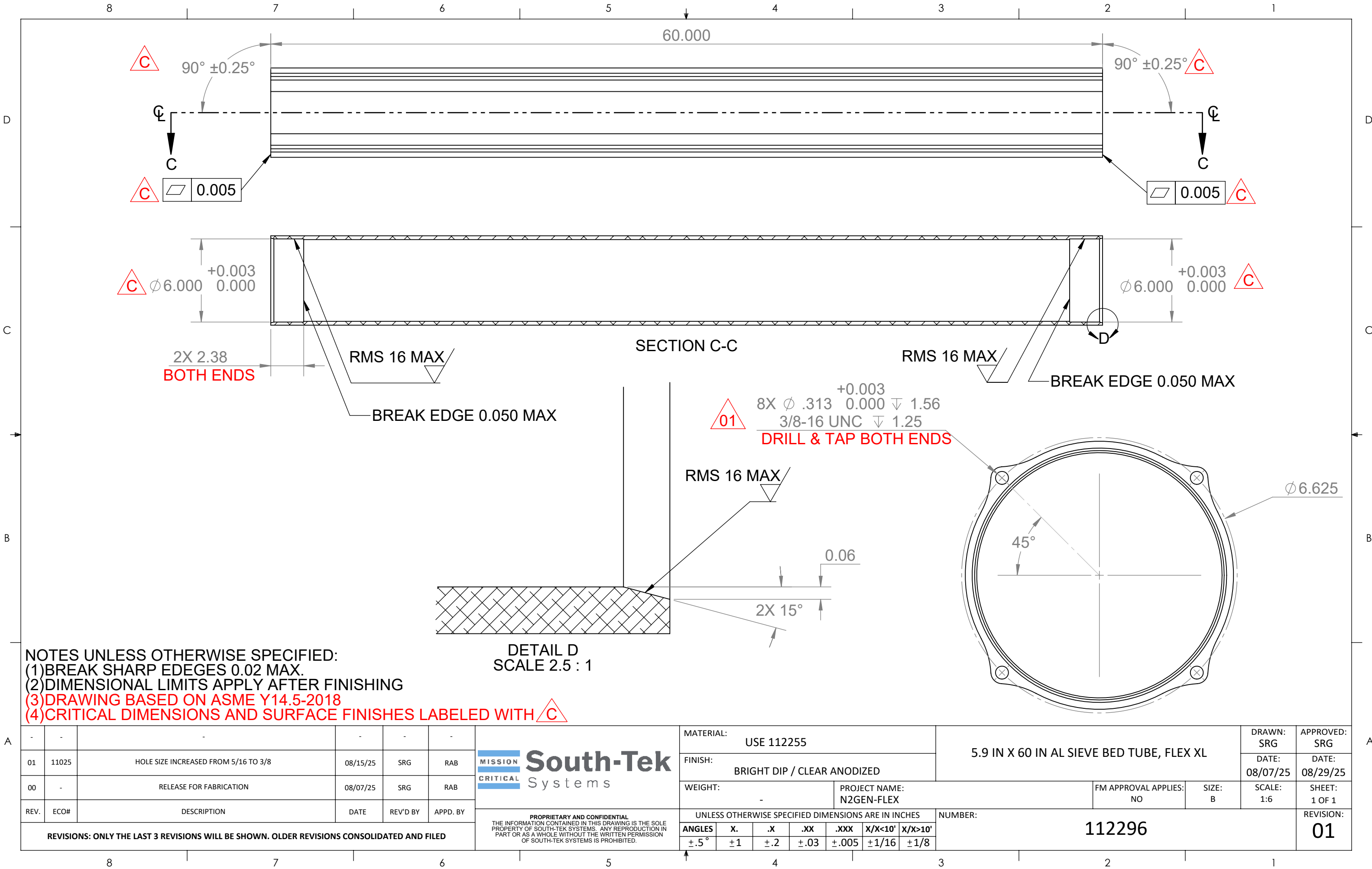


EXTRUSION PROFILE

NOTES UNLESS OTHERWISE SPECIFIED:
(1)STRAIGHTNESS 0.0125 MAX PER FOOT.
(2)TWIST 0.50 DEG MAX PER FOOT.
(3)DRAWING BASED ON ASME Y14.5-2018

A

| | | | | | | | | | | | | | | | |
|--|-------|-------------------|----------|----------|----------|---|---|----|----------------------------------|----------------------------|------------|---------------|-------------------|-------------------|---|
| - | - | - | - | - | - | <div><div>MISSION</div><div>CRITICAL</div><div>South-Tek</div><div>Systems</div></div> <div>PROPRIETARY AND CONFIDENTIAL THE INFORMATION CONTAINED IN THIS DRAWING IS THE SOLE PROPERTY OF SOUTH-TEK SYSTEMS. ANY REPRODUCTION IN PART OR AS A WHOLE WITHOUT THE WRITTEN PERMISSION OF SOUTH-TEK SYSTEMS IS PROHIBITED.</div> | MATERIAL: 6463-T5 ALUMINUM | | 5.9 IN AL SIEVE BED TUBE, FLEX | | | | DRAWN: SRG | APPROVED: SRG | A |
| 01 | 11025 | REMOVED SHEET 2 | 08/07/25 | SRG | RB | | FINISH: RAW | | | | | | DATE: 07/01/25 | DATE: 08/29/25 | |
| 00 | - | RELEASE FOR QOUTE | 07/01/25 | SRG | JM | | WEIGHT: - | | PROJECT NAME: MULTI BED UNITS | FM APPROVAL APPLIES: NO | SIZE: B | SCALE: 1:1 | SHEET: 1 OF 1 | | |
| REV. | ECO# | DESCRIPTION | DATE | REV'D BY | APPD. BY | | UNLESS OTHERWISE SPECIFIED DIMENSIONS ARE IN INCHES | | NUMBER: 112255 | | | | REVISION: 01 | | |
| REVISIONS: ONLY THE LAST 3 REVISIONS WILL BE SHOWN. OLDER REVISIONS CONSOLIDATED AND FILED | | | | | | | ANGLES | X. | .X | .XX | .XXX | X/X<10' | X/X>10' | | |
| | | | | | | | ±.5° | ±1 | ±.2 | ±.03 | ±.005 | ±1/16 | ±1/8 | | |



NOTES UNLESS OTHERWISE SPECIFIED:
(1)BREAK SHARP EDEGES 0.02 MAX.
(2)DIMENSIONAL LIMITS APPLY AFTER FINISHING
(3)DRAWING BASED ON ASME Y14.5-2018
(4)CRITICAL DIMENSIONS AND SURFACE FINISHES LABELED WITH △C

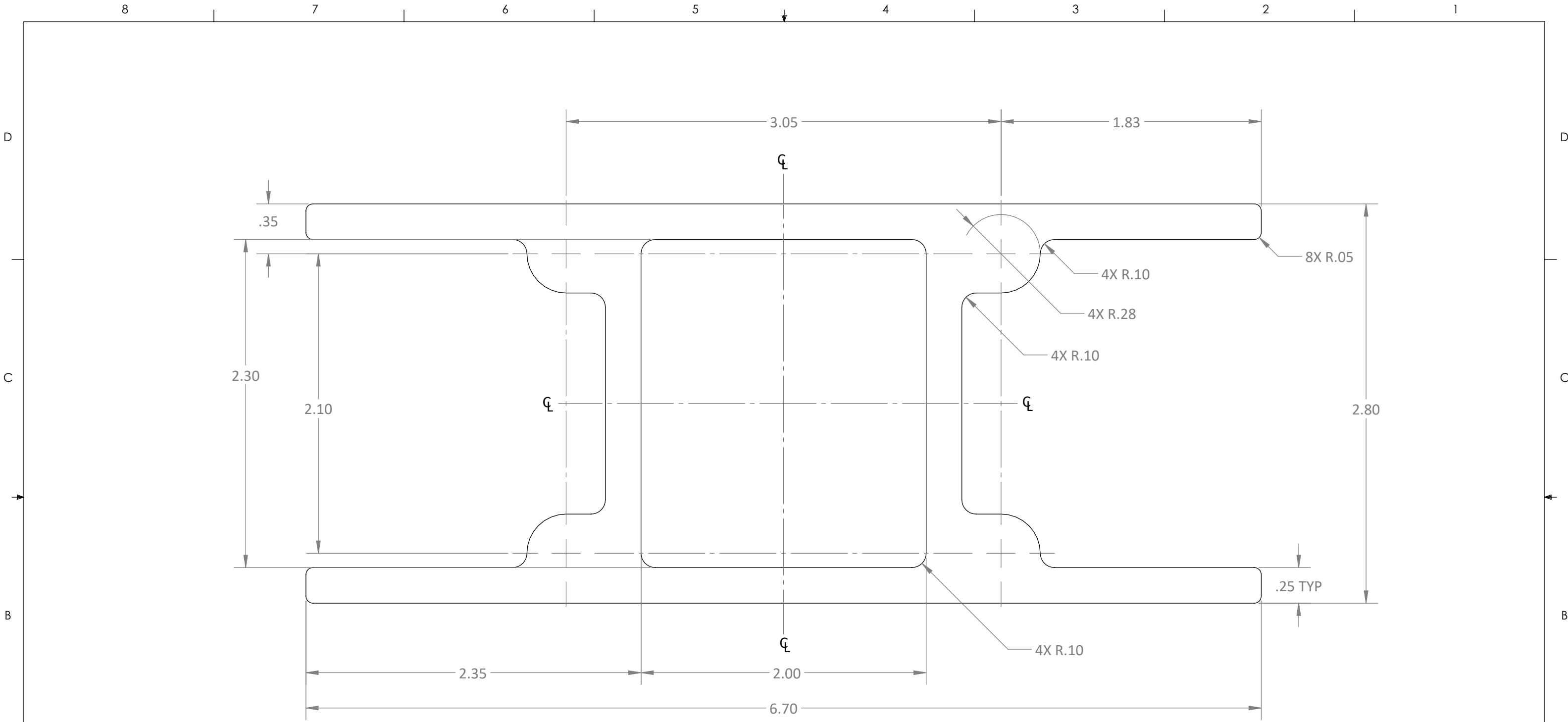
| | | | | | |
|--|-------|--------------------------------------|----------|----------|----------|
| - | - | - | - | - | - |
| 01 | 11025 | HOLE SIZE INCREASED FROM 5/16 TO 3/8 | 08/15/25 | SRG | RAB |
| 00 | - | RELEASE FOR FABRICATION | 08/07/25 | SRG | RAB |
| REV. | ECO# | DESCRIPTION | DATE | REV'D BY | APPD. BY |
| REVISIONS: ONLY THE LAST 3 REVISIONS WILL BE SHOWN. OLDER REVISIONS CONSOLIDATED AND FILED | | | | | |

MISSION
CRITICAL

South-Tek
Systems

PROPRIETARY AND CONFIDENTIAL
THE INFORMATION CONTAINED IN THIS DRAWING IS THE SOLE
PROPERTY OF SOUTH-TEK SYSTEMS. ANY REPRODUCTION IN
PART OR AS A WHOLE WITHOUT THE WRITTEN PERMISSION
OF SOUTH-TEK SYSTEMS IS PROHIBITED.

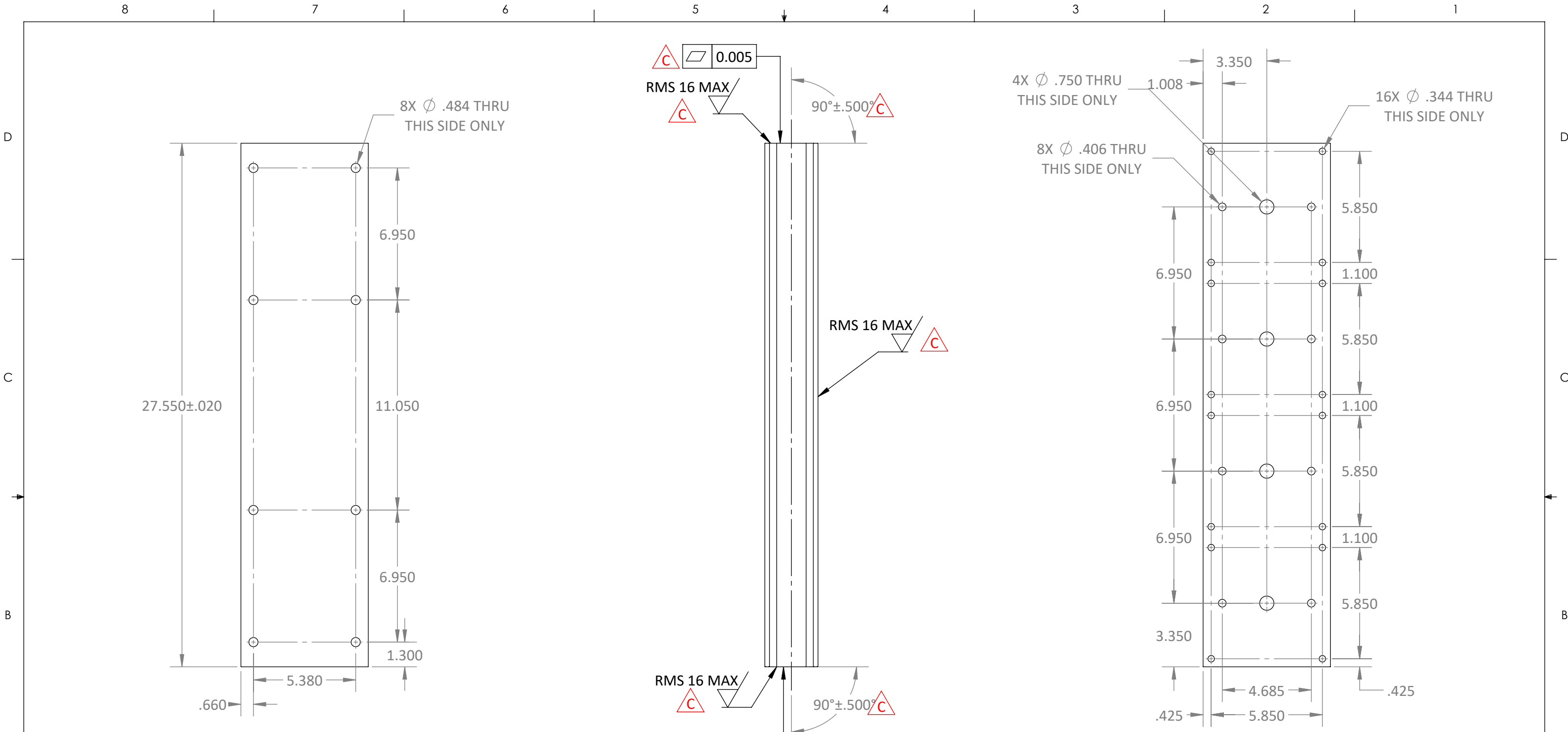
| | | | | | | | | | | | | | | | |
|---|----|-----|------|---------------|---------|---------|---|----------------------|--|-------|----------|--------|-----------|-----------|--|
| MATERIAL: | | | | | | | 5.9 IN X 60 IN AL SIEVE BED TUBE, FLEX XL | | | | DRAWN: | | APPROVED: | | |
| USE 112255 | | | | | | | | | | | SRG | | SRG | | |
| FINISH: | | | | | | | | | | | DATE: | | DATE: | | |
| BRIGHT DIP / CLEAR ANODIZED | | | | | | | | | | | 08/07/25 | | 08/29/25 | | |
| WEIGHT: | | | | PROJECT NAME: | | | | FM APPROVAL APPLIES: | | SIZE: | | SCALE: | | SHEET: | |
| - | | | | N2GEN-FLEX | | | | NO | | B | | 1:6 | | 1 OF 1 | |
| UNLESS OTHERWISE SPECIFIED DIMENSIONS ARE IN INCHES | | | | | | | NUMBER: | | | | | | | REVISION: | |
| ANGLES | X. | .X | .XX | .XXX | X/X<10' | X/X>10' | 112296 | | | | | | | 01 | |
| ±.5° | ±1 | ±.2 | ±.03 | ±.005 | ±1/16 | ±1/8 | | | | | | | | | |



NOTES UNLESS OTHERWISE SPECIFIED:
(1)STRAIGHTNESS 0.0125 MAX PER FOOT.
(2)TWIST 0.50 DEG MAX PER FOOT.
(3)DRAWING BASED ON ASME Y14.5-2018

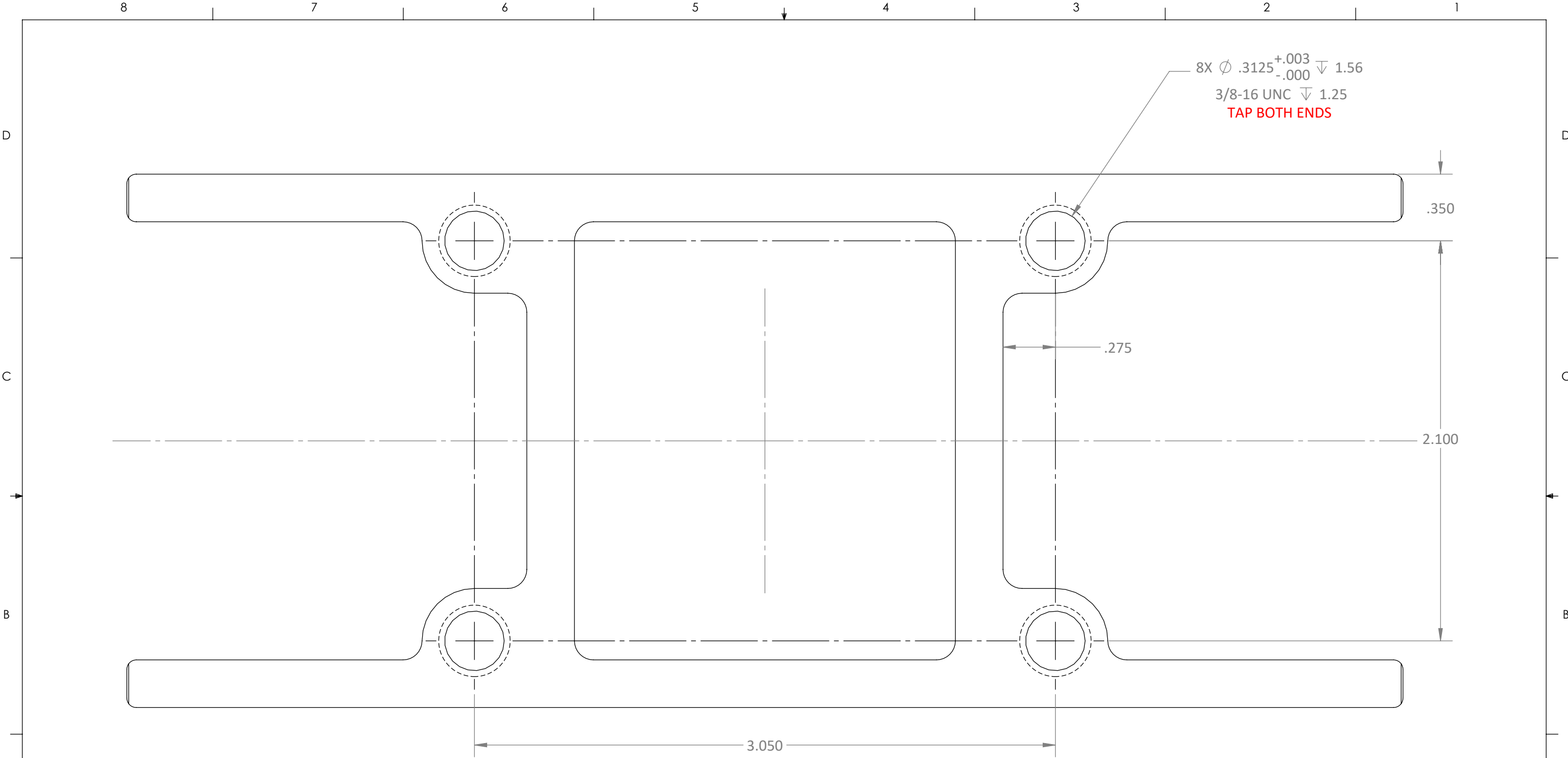
| | | | | | | | | | | | | | | | | |
|--|------|-------------------|---------|----------|----------------|---|---|----|-------------------|----------------------------------|--|---------|----------------------------|------------|---------------------|------------------|
| - | - | - | - | - | - | <div><div>MISSION</div><div>CRITICAL</div><div>South-Tek Systems</div></div> <div>PROPRIETARY AND CONFIDENTIAL THE INFORMATION CONTAINED IN THIS DRAWING IS THE SOLE PROPERTY OF SOUTH-TEK SYSTEMS. ANY REPRODUCTION IN PART OR AS A WHOLE WITHOUT THE WRITTEN PERMISSION OF SOUTH-TEK SYSTEMS IS PROHIBITED.</div> | MATERIAL: 6463-T5 ALUMINUM | | | | N2GEN FLEX MANIFOLD EXTRUSION PROFILE, 5.9 BEDS | | | | DRAWN: SRG | APPROVED: SRG |
| | | | | | FINISH: RAW | | | | DATE: 06/29/23 | DATE: 08/29/25 | | | | | | |
| A0 | - | RELEASE FOR QUOTE | 8/26/25 | SRG | RAB | | WEIGHT: | | | PROJECT NAME: MULTI BED UNITS | | | FM APPROVAL APPLIES: NO | SIZE: B | SCALE: 1.5:1 | SHEET: 1 OF 1 |
| REV. | ECO# | DESCRIPTION | DATE | REV'D BY | APPD. BY | | UNLESS OTHERWISE SPECIFIED DIMENSIONS ARE IN INCHES | | | | NUMBER: 113100 | | | | REVISION: 00 | |
| REVISIONS: ONLY THE LAST 3 REVISIONS WILL BE SHOWN. OLDER REVISIONS CONSOLIDATED AND FILED | | | | | | | ANGLES | X. | .X | .XX | .XXX | X/X<10' | X/X>10' | | | |





NOTES UNLESS OTHERWISE SPECIFIED:
(1)BREAK SHARP EDGES 0.02 MAX.
(2)DIMENSIONAL LIMITS APPLY AFTER FINISHING
(3)DRAWING BASED ON ASME Y14.5-2018
(4)CRITICAL DIMENSIONS AND SURFACE FINISHES LABELED WITH 

| | | | | | | | | | | | | | | | | | | | | | | |
|--|------|-------------------|--|----------|----------|---|--|---|--------------------------------------|----------------------------------|----------------------|-------------------|----------------------------|-------------------|------------|---------------|------------------|--|---|--|---|--|
| A | | | | | | <div><div>MISSION</div><div>CRITICAL</div><div>South-Tek</div><div>Systems</div></div> <div>PROPRIETARY AND CONFIDENTIAL THE INFORMATION CONTAINED IN THIS DRAWING IS THE SOLE PROPERTY OF SOUTH-TEK SYSTEMS. ANY REPRODUCTION IN PART OR AS A WHOLE WITHOUT THE WRITTEN PERMISSION OF SOUTH-TEK SYSTEMS IS PROHIBITED.</div> | MATERIAL: MAKE FROM 113100 | | 4 BED AL EXTRUDED MANIFOLD, 5.9 BEDS | | | DRAWN: BS | | APPROVED: SRG | | | | | | | | |
| | | | | | | | FINISH: BRIGHT DIP / CLEAR ANODIZED | | | | | DATE: 08/19/25 | | DATE: 08/29/25 | | | | | | | | |
| A0 | | RELEASE FOR QUOTE | | 08/19/25 | SRG | | RAB | WEIGHT: - | | PROJECT NAME: MULTI BED UNITS | | | FM APPROVAL APPLIES: NO | | SIZE: B | SCALE: 1:5 | SHEET: 1 OF 2 | | | | | |
| REV. | ECO# | DESCRIPTION | | DATE | REV'D BY | | APPD. BY | UNLESS OTHERWISE SPECIFIED DIMENSIONS ARE IN INCHES | | | NUMBER: 113100-04 | | | REVISION: 00 | | | | | | | | |
| REVISIONS: ONLY THE LAST 3 REVISIONS WILL BE SHOWN. OLDER REVISIONS CONSOLIDATED AND FILED | | | | | | | ANGLES | | X. | .X | .XX | .XXX | X/X<10' | X/X>10' | | | | | | | | |
| | | | | | | | ±.5° | | ±1 | ±.2 | ±.03 | ±.005 | ±1/16 | ±1/8 | | | | | | | | |
| | | | | | | | 8 | | 7 | | 6 | | 5 | | 4 | | 3 | | 2 | | 1 | |



A

| | | | | | | | | | | | | | | | |
|--|------|-------------------|----------|----------|----------|---|---|-------------------------------|--------------------------------------|-------------------------|---------|------------|----------------|---------------|---|
| | | | | | | <div><div>MISSION</div><div>CRITICAL</div><div>South-Tek Systems</div></div> <div>PROPRIETARY AND CONFIDENTIAL THE INFORMATION CONTAINED IN THIS DRAWING IS THE SOLE PROPERTY OF SOUTH-TEK SYSTEMS. ANY REPRODUCTION IN PART OR AS A WHOLE WITHOUT THE WRITTEN PERMISSION OF SOUTH-TEK SYSTEMS IS PROHIBITED.</div> | MATERIAL: MAKE FROM 113100 | | 4 BED AL EXTRUDED MANIFOLD, 5.9 BEDS | | | | DRAWN: BS | APPROVED: SRG | A |
| | | | | | | | FINISH: BRIGHT DIP / CLEAR ANODIZED | DATE: 08/19/25 | | | | | DATE: 08/29/25 | | |
| A0 | | RELEASE FOR QUOTE | 08/19/25 | SRG | RAB | | WEIGHT: - | PROJECT NAME: MULTI BED UNITS | | FM APPROVAL APPLIES: NO | SIZE: B | SCALE: 2:1 | SHEET: 2 OF 2 | | |
| REV. | ECO# | DESCRIPTION | DATE | REV'D BY | APPD. BY | | UNLESS OTHERWISE SPECIFIED DIMENSIONS ARE IN INCHES | | NUMBER: 113100-04 | | | | REVISION: 00 | | |
| REVISIONS: ONLY THE LAST 3 REVISIONS WILL BE SHOWN. OLDER REVISIONS CONSOLIDATED AND FILED | | | | | | | ANGLES | X. | .X | .XX | .XXX | X/X<10' | X/X>10' | | |
| | | | | | | | ±.5° | ±1 | ±.2 | ±.03 | ±.005 | ±1/16 | ±1/8 | | |

8

7

6

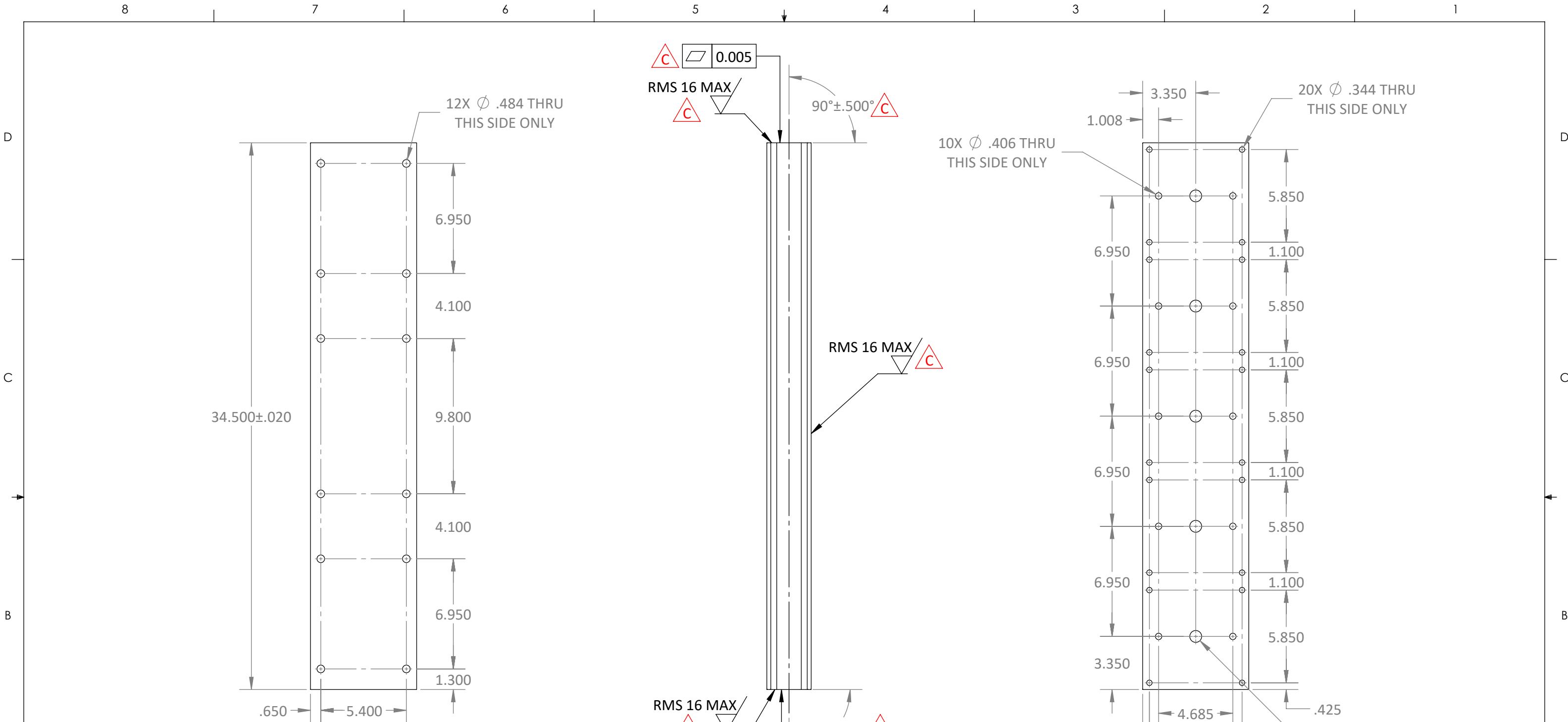
5

4

3

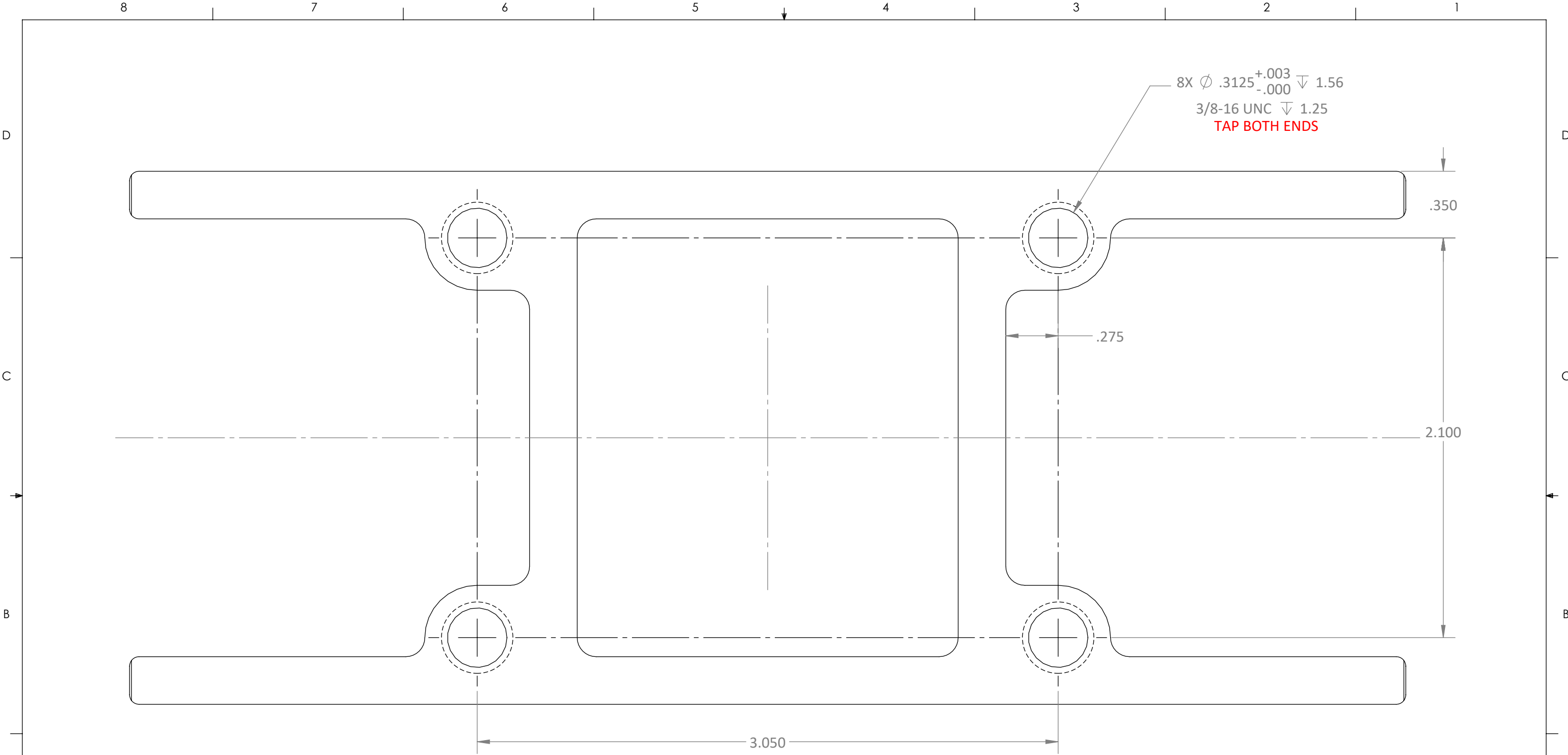
2

1

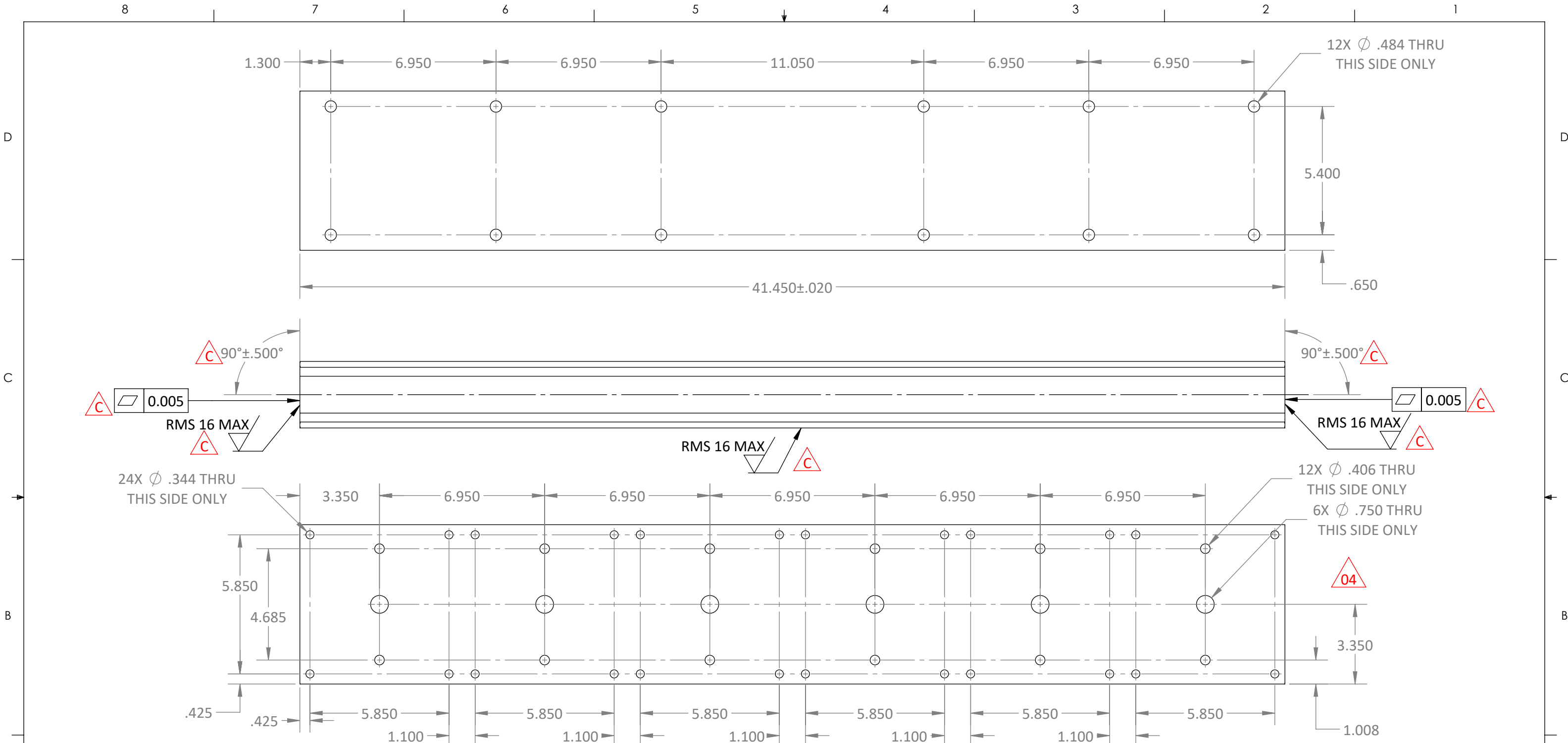


NOTES UNLESS OTHERWISE SPECIFIED:
(1)BREAK SHARP EDGES 0.02 MAX.
(2)DIMENSIONAL LIMITS APPLY AFTER FINISHING
(3)DRAWING BASED ON ASME Y14.5-2018
(4)CRITICAL DIMENSIONS AND SURFACE FINISHES LABELED WITH 

| | | | | | | | | | | | | | | | |
|---|--|------|-------------------|---------|----------|--|--|---|--------------------------------------|----------------------------------|-------|----------------------------|-------------------|-------------------|------------------|
| A | | | | | | <div><div>MISSION</div><div>CRITICAL</div><div>South-Tek</div><div>Systems</div></div> <div>THE INFORMATION CONTAINED IN THIS DRAWING IS THE SOLE PROPERTY OF SOUTH-TEK SYSTEMS. ANY REPRODUCTION IN PART OR AS A WHOLE WITHOUT THE WRITTEN PERMISSION OF SOUTH-TEK SYSTEMS IS PROHIBITED.</div> | MATERIAL: MAKE FROM 113100 | | 5 BED AL EXTRUDED MANIFOLD, 5.9 BEDS | | | | DRAWN: BS | APPROVED: SRG | |
| | | | | | | | FINISH: BRIGHT DIP / CLEAR ANODIZED | | | | | | DATE: 08/19/25 | DATE: 08/29/25 | |
| | A0 | | RELEASE FOR QUOTE | 8/26/25 | SRG | | RAB | WEIGHT: - | | PROJECT NAME: MULTI BED UNITS | | FM APPROVAL APPLIES: NO | SIZE: B | SCALE: 1:6 | SHEET: 1 OF 2 |
| | REV. | ECO# | DESCRIPTION | DATE | REV'D BY | | APPD. BY | UNLESS OTHERWISE SPECIFIED DIMENSIONS ARE IN INCHES | | NUMBER: 113100-05 | | | | REVISION: 00 | |
| | REVISIONS: ONLY THE LAST 3 REVISIONS WILL BE SHOWN. OLDER REVISIONS CONSOLIDATED AND FILED | | | | | | ANGLES | | X. | .X | .XX | .XXX | X/X<10' | X/X>10' | |
| | | | | | | ±.5° | | ±1 | ±.2 | ±.03 | ±.005 | ±1/16 | ±1/8 | | |

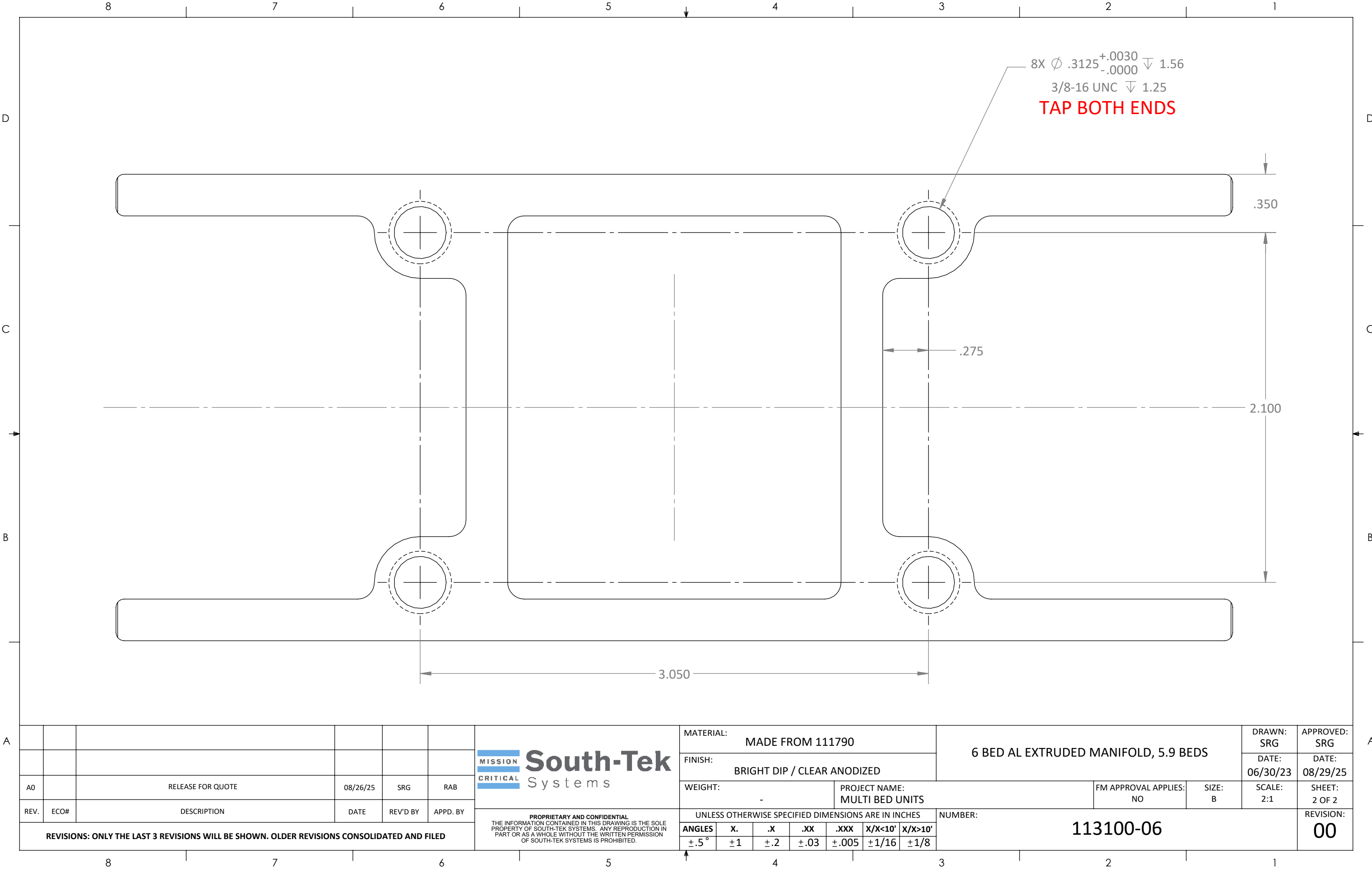


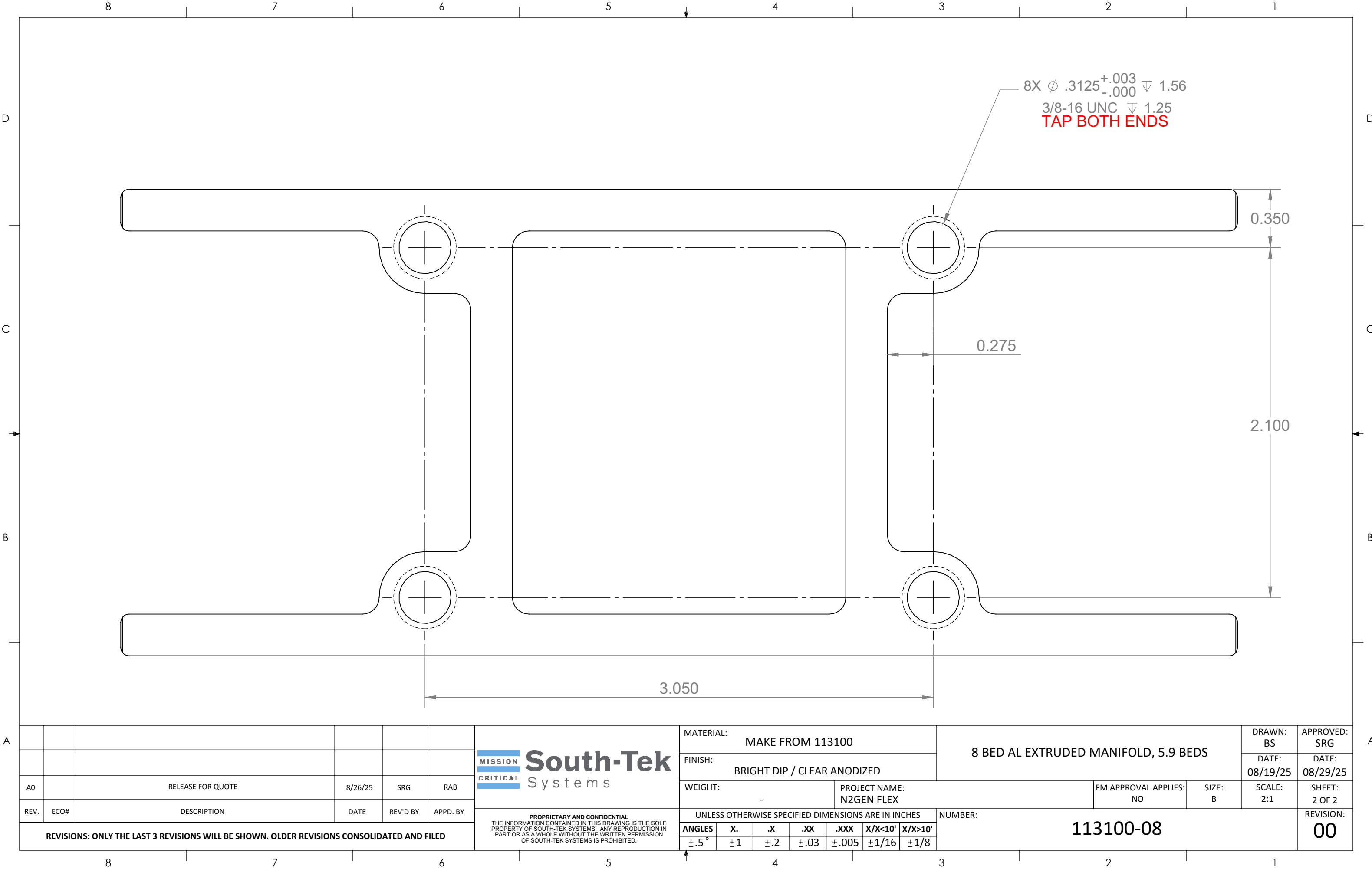
| | | | | | | | | | | | | | | | | |
|---|--|------|-------------------|---------|----------|---|----------------------------|---|--------------------------------------|-------------------------------|-------------------|-------------------------|----------------|----------------|---|---------------|
| A | | | | | | <div><div>MISSION</div><div>CRITICAL</div><div>South-Tek Systems</div></div> <div>PROPRIETARY AND CONFIDENTIAL THE INFORMATION CONTAINED IN THIS DRAWING IS THE SOLE PROPERTY OF SOUTH-TEK SYSTEMS. ANY REPRODUCTION IN PART OR AS A WHOLE WITHOUT THE WRITTEN PERMISSION OF SOUTH-TEK SYSTEMS IS PROHIBITED.</div> | MATERIAL: MAKE FROM 113100 | | 5 BED AL EXTRUDED MANIFOLD, 5.9 BEDS | | | | DRAWN: BS | APPROVED: SRG | A | |
| | | | | | | | | FINISH: BRIGHT DIP / CLEAR ANODIZED | | | | | DATE: 08/19/25 | DATE: 08/29/25 | | |
| | A0 | | RELEASE FOR QUOTE | 8/26/25 | SRG | | RAB | WEIGHT: - | | PROJECT NAME: MULTI BED UNITS | | FM APPROVAL APPLIES: NO | SIZE: B | SCALE: 2:1 | | SHEET: 2 OF 2 |
| | REV. | ECO# | DESCRIPTION | DATE | REV'D BY | | APPD. BY | UNLESS OTHERWISE SPECIFIED DIMENSIONS ARE IN INCHES | | | NUMBER: 113100-05 | | | | | REVISION: 00 |
| | REVISIONS: ONLY THE LAST 3 REVISIONS WILL BE SHOWN. OLDER REVISIONS CONSOLIDATED AND FILED | | | | | | ANGLES | X. | .X | .XX | .XXX | X/X<10' | X/X>10' | | | |
| | | | | | | ±.5° | ±1 | ±.2 | ±.03 | ±.005 | ±1/16 | ±1/8 | | | | |

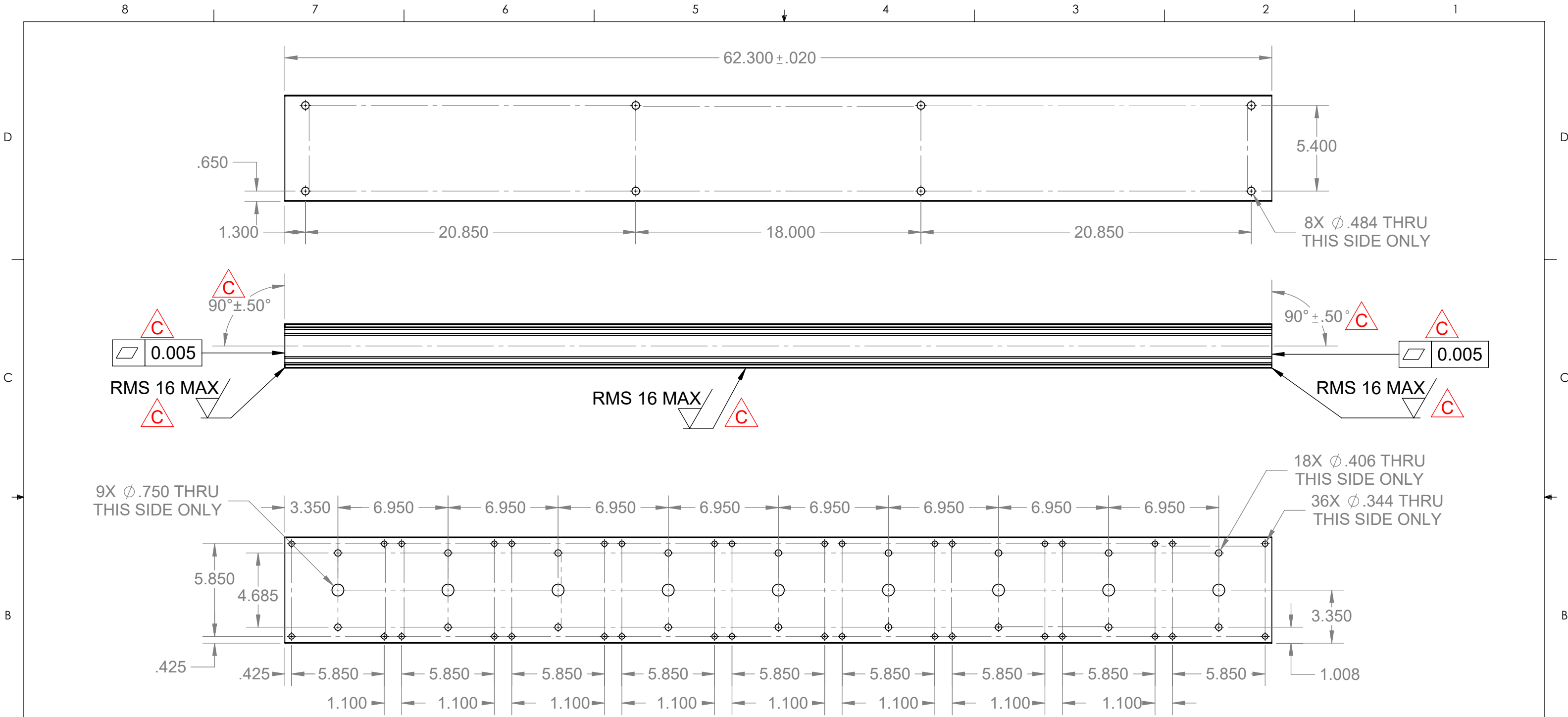


NOTES UNLESS OTHERWISE SPECIFIED:
(1)BREAK SHARP EDGES 0.02 MAX.
(2)DIMENSIONAL LIMITS APPLY AFTER FINISHING
(3)DRAWING BASED ON ASME Y14.5-2018
(4)CRITICAL DIMENSIONS AND SURFACE FINISHES LABELED WITH △C

| | | | | | | | | | | | | | | | | | | | | | | | | | | | | | |
|---|--|------|-------------------|----------|----------|---|-------------------------------|---|--------------------------------------|-----|---------|----------------------------|-------------------|------|---------------|------------------|-----------|---|--|----|---|--|--|---|--|--|---|--|--|
| A | | | | | | <div><div>MISSION</div><div>CRITICAL</div><div>South-Tek Systems</div></div> <div>PROPRIETARY AND CONFIDENTIAL THE INFORMATION CONTAINED IN THIS DRAWING IS THE SOLE PROPERTY OF SOUTH-TEK SYSTEMS. ANY REPRODUCTION IN PART OR AS A WHOLE WITHOUT THE WRITTEN PERMISSION OF SOUTH-TEK SYSTEMS IS PROHIBITED.</div> | MATERIAL: MADE FROM 113100 | | 6 BED AL EXTRUDED MANIFOLD, 5.9 BEDS | | | DRAWN: SRG | APPROVED: SRG | A | | | | | | | | | | | | | | | |
| | | | | | | | | FINISH: BRIGHT DIP / CLEAR ANODIZED | | | | DATE: 06/30/23 | DATE: 08/29/25 | | | | | | | | | | | | | | | | |
| | A0 | | RELEASE FOR QUOTE | 08/26/25 | SRG | | RAB | WEIGHT: - | PROJECT NAME: MULTI BED UNITS | | | FM APPROVAL APPLIES: NO | SIZE: B | | SCALE: 1:4 | SHEET: 1 OF 2 | | | | | | | | | | | | | |
| | REV. | ECO# | DESCRIPTION | DATE | REV'D BY | | APPD. BY | UNLESS OTHERWISE SPECIFIED DIMENSIONS ARE IN INCHES | | | NUMBER: | | | | REVISION: | | | | | | | | | | | | | | |
| | REVISIONS: ONLY THE LAST 3 REVISIONS WILL BE SHOWN. OLDER REVISIONS CONSOLIDATED AND FILED | | | | | | ANGLES | | | X. | .X | .XX | .XXX | | X/X<10' | X/X>10' | 113100-06 | | | 00 | | | | | | | | | |
| | | | | | | ±.5° | | | ±1 | ±.2 | ±.03 | ±.005 | ±1/16 | ±1/8 | | | | | | | | | | | | | | | |
| | | | | | | 8 | | | 7 | | | 6 | | | 5 | | | 4 | | | 3 | | | 2 | | | 1 | | |

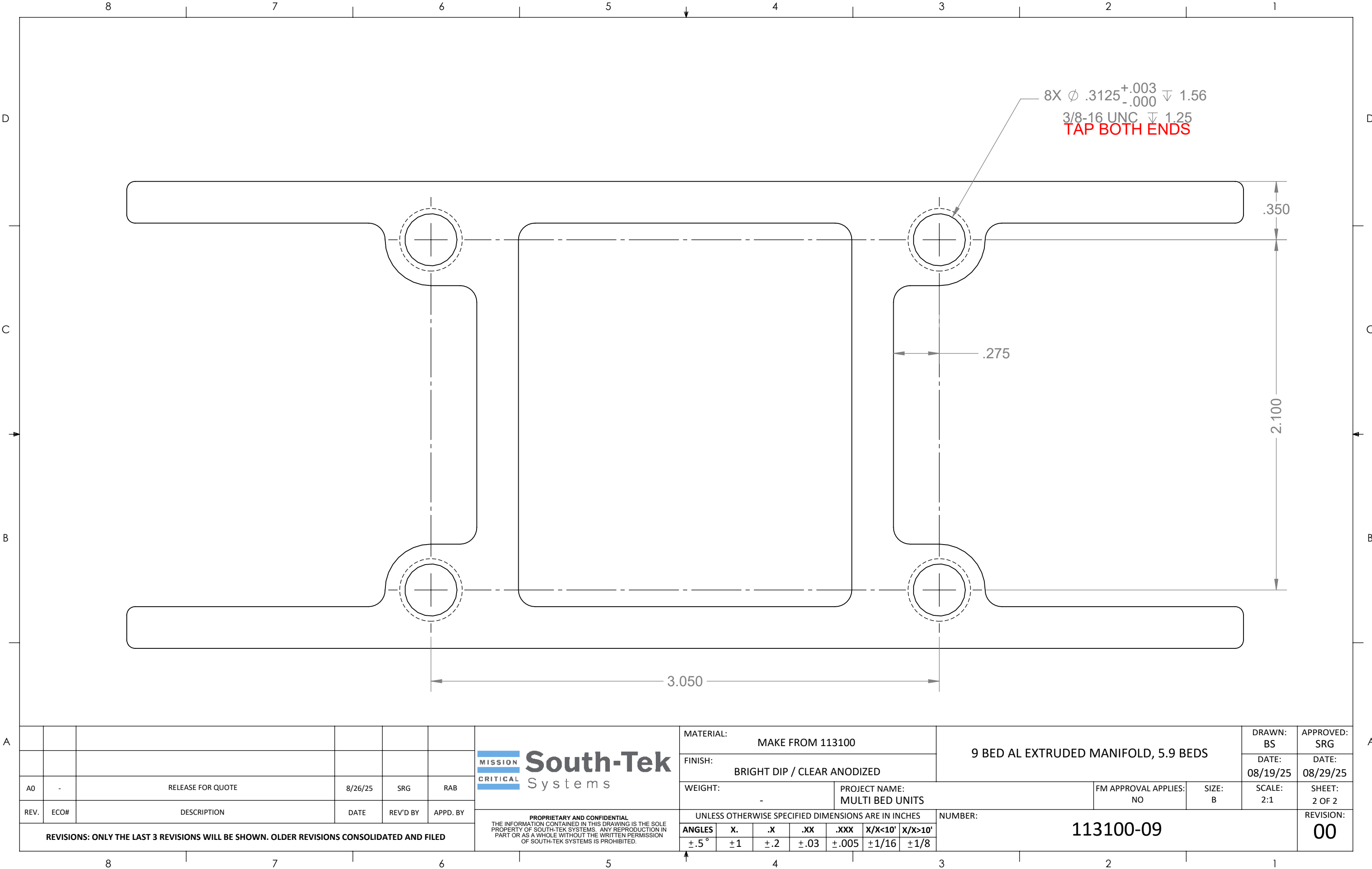






NOTES UNLESS OTHERWISE SPECIFIED:
(1) BREAK SHARP EDGES 0.02 MAX.
(2) DIMENSIONAL LIMITS APPLY AFTER FINISHING
(3) DRAWING BASED ON ASME Y14.5-2018
(4) CRITICAL DIMENSIONS AND SURFACE FINISHES LABELED WITH △C

| | | | | | | | | | | | | | | | | | |
|---|--|------|-------------------|---------|----------|--|--|-------------------------------------|--------------------------------------|-------------------|-------------------------|----------------|----------------|---------------|---------|---------|--|
| A | | | | | | <div><div>MISSION</div><div>CRITICAL</div><div>South-Tek Systems</div></div> | MATERIAL: MAKE FROM 113100 | | 9 BED AL EXTRUDED MANIFOLD, 5.9 BEDS | | | DRAWN: BS | APPROVED: SRG | A | | | |
| | | | | | | | | FINISH: BRIGHT DIP / CLEAR ANODIZED | | | | DATE: 08/19/25 | DATE: 08/29/25 | | | | |
| | A0 | - | RELEASE FOR QUOTE | 8/26/25 | SRG | RAB | WEIGHT: - | PROJECT NAME: MULTI BED UNITS | | | FM APPROVAL APPLIES: NO | SIZE: B | SCALE: 1:6 | SHEET: 1 OF 2 | | | |
| | REV. | ECO# | DESCRIPTION | DATE | REV'D BY | APPD. BY | UNLESS OTHERWISE SPECIFIED DIMENSIONS ARE IN INCHES | | | NUMBER: 113100-09 | | | REVISION: 00 | | | | |
| | REVISIONS: ONLY THE LAST 3 REVISIONS WILL BE SHOWN. OLDER REVISIONS CONSOLIDATED AND FILED | | | | | | PROPRIETARY AND CONFIDENTIAL THE INFORMATION CONTAINED IN THIS DRAWING IS THE SOLE PROPERTY OF SOUTH-TEK SYSTEMS. ANY REPRODUCTION IN PART OR AS A WHOLE WITHOUT THE WRITTEN PERMISSION OF SOUTH-TEK SYSTEMS IS PROHIBITED. | | | ANGLES | X. | .X | .XX | .XXX | X/X<10' | X/X>10' | |
| | | | | | | | | | ±.5° | ±1 | ±.2 | ±.03 | ±.005 | ±1/16 | ±1/8 | | |
| | | | | | | | | | | | | | | | | | |
| | | | | | | | | | | | | | | | | | |
| | | | | | | | | | | | | | | | | | |
| | | | | | | | | | | | | | | | | | |
| | | | | | | | | | | | | | | | | | |
| | | | | | | | | | | | | | | | | | |
| | | | | | | | | | | | | | | | | | |
| | | | | | | | | | | | | | | | | | |
| | | | | | | | | | | | | | | | | | |
| | | | | | | | | | | | | | | | | | |
| | | | | | | | | | | | | | | | | | |
| | | | | | | | | | | | | | | | | | |
| | | | | | | | | | | | | | | | | | |
| | | | | | | | | | | | | | | | | | |
| | | | | | | | | | | | | | | | | | |
| | | | | | | | | | | | | | | | | | |
| | | | | | | | | | | | | | | | | | |
| | | | | | | | | | | | | | | | | | |
| | | | | | | | | | | | | | | | | | |
| | | | | | | | | | | | | | | | | | |
| | | | | | | | | | | | | | | | | | |
| | | | | | | | | | | | | | | | | | |
| | | | | | | | | | | | | | | | | | |
| | | | | | | | | | | | | | | | | | |
| | | | | | | | | | | | | | | | | | |
| | | | | | | | | | | | | | | | | | |
| | | | | | | | | | | | | | | | | | |
| | | | | | | | | | | | | | | | | | |
| | | | | | | | | | | | | | | | | | |
| | | | | | | | | | | | | | | | | | |
| | | | | | | | | | | | | | | | | | |
| | | | | | | | | | | | | | | | | | |
| | | | | | | | | | | | | | | | | | |
| | | | | | | | | | | | | | | | | | |
| | | | | | | | | | | | | | | | | | |
| | | | | | | | | | | | | | | | | | |
| | | | | | | | | | | | | | | | | | |
| | | | | | | | | | | | | | | | | | |
| | | | | | | | | | | | | | | | | | |
| | | | | | | | | | | | | | | | | | |
| | | | | | | | | | | | | | | | | | |
| | | | | | | | | | | | | | | | | | |
| | | | | | | | | | | | | | | | | | |
| | | | | | | | | | | | | | | | | | |
| | | | | | | | | | | | | | | | | | |
| | | | | | | | | | | | | | | | | | |
| | | | | | | | | | | | | | | | | | |
| | | | | | | | | | | | | | | | | | |
| | | | | | | | | | | | | | | | | | |
| | | | | | | | | | | | | | | | | | |
| | | | | | | | | | | | | | | | | | |
| | | | | | | | | | | | | | | | | | |
| | | | | | | | | | | | | | | | | | |
| | | | | | | | | | | | | | | | | | |
| | | | | | | | | | | | | | | | | | |
| | | | | | | | | | | | | | | | | | |
| | | | | | | | | | | | | | | | | | |
| | | | | | | | | | | | | | | | | | |
| | | | | | | | | | | | | | | | | | |
| | | | | | | | | | | | | | | | | | |
| | | | | | | | | | | | | | | | | | |
| | | | | | | | | | | | | | | | | | |
| | | | | | | | | | | | | | | | | | |
| | | | | | | | | | | | | | | | | | |
| | | | | | | | | | | | | | | | | | |
| | | | | | | | | | | | | | | | | | |
| | | | | | | | | | | | | | | | | | |
| | | | | | | | | | | | | | | | | | |
| | | | | | | | | | | | | | | | | | |
| | | | | | | | | | | | | | | | | | |
| | | | | | | | | | | | | | | | | | |
| | | | | | | | | | | | | | | | | | |
| | | | | | | | | | | | | | | | | | |
| | | | | | | | | | | | | | | | | | |
| | | | | | | | | | | | | | | | | | |
| | | | | | | | | | | | | | | | | | |
| | | | | | | | | | | | | | | | | | |
| | | | | | | | | | | | | | | | | | |
| | | | | | | | | | | | | | | | | | |
| | | | | | | | | | | | | | | | | | |
| | | | | | | | | | | | | | | | | | |
| | | | | | | | | | | | | | | | | | |
| | | | | | | | | | | | | | | | | | |
| | | | | | | | | | | | | | | | | | |
| | | | | | | | | | | | | | | | | | |
| | | | | | | | | | | | | | | | | | |
| | | | | | | | | | | | | | | | | | |
| | | | | | | | | | | | | | | | | | |
| | | | | | | | | | | | | | | | | | |
| | | | | | | | | | | | | | | | | | |
| | | | | | | | | | | | | | | | | | |
| | | | | | | | | | | | | | | | | | |
| | | | | | | | | | | | | | | | | | |
| | | | | | | | | | | | | | | | | | |
| | | | | | | | | | | | | | | | | | |
| | | | | | | | | | | | | | | | | | |
| | | | | | | | | | | | | | | | | | |
| | | | | | | | | | | | | | | | | | |
| | | | | | | | | | | | | | | | | | |
| | | | | | | | | | | | | | | | | | |
| | | | | | | | | | | | | | | | | | |
| | | | | | | | | | | | | | | | | | |
| | | | | | | | | | | | | | | | | | |
| | | | | | | | | | | | | | | | | | |
| | | | | | | | | | | | | | | | | | |
| | | | | | | | | | | | | | | | | | |
| | | | | | | | | | | | | | | | | | |
| | | | | | | | | | | | | | | | | | |
| | | | | | | | | | | | | | | | | | |
| | | | | | | | | | | | | | | | | | |
| | | | | | | | | | | | | | | | | | |
| | | | | | | | | | | | | | | | | | |
| | | | | | | | | | | | | | | | | | |
| | | | | | | | | | | | | | | | | | |
| | | | | | | | | | | | | | | | | | |
| | | | | | | | | | | | | | | | | | |
| | | | | | | | | | | | | | | | | | |
| | | | | | | | | | | | | | | | | | |
| | | | | | | | | | | | | | | | | | |
| | | | | | | | | | | | | | | | | | |
| | | | | | | | | | | | | | | | | | |
| | | | | | | | | | | | | | | | | | |
| | | | | | | | | | | | | | | | | | |
| | | | | | | | | | | | | | | | | | |
| | | | | | | | | | | | | | | | | | |
| | | | | | | | | | | | | | | | | | |
| | | | | | | | | | | | | | | | | | |
| | | | | | | | | | | | | | | | | | |



A

| | | | | | | | | | | | | | | | | |
|--|------|-------------------|---------|----------|----------|--|--|--|--------------------------------------|-------------------------|---------|------------|----------------|----------------|---------|--|
| | | | | | | <div><div>MISSION</div><div>CRITICAL</div></div> <div>South-Tek</div> <div>Systems</div> | MATERIAL: MAKE FROM 113100 | | 9 BED AL EXTRUDED MANIFOLD, 5.9 BEDS | | | | DRAWN: BS | APPROVED: SRG | A | |
| | | | | | | | FINISH: BRIGHT DIP / CLEAR ANODIZED | | | | | | DATE: 08/19/25 | DATE: 08/29/25 | | |
| A0 | - | RELEASE FOR QUOTE | 8/26/25 | SRG | RAB | | WEIGHT: - | | PROJECT NAME: MULTI BED UNITS | FM APPROVAL APPLIES: NO | SIZE: B | SCALE: 2:1 | SHEET: 2 OF 2 | | | |
| REV. | ECO# | DESCRIPTION | DATE | REV'D BY | APPD. BY | | UNLESS OTHERWISE SPECIFIED DIMENSIONS ARE IN INCHES | | NUMBER: 113100-09 | | | | REVISION: 00 | | | |
| REVISIONS: ONLY THE LAST 3 REVISIONS WILL BE SHOWN. OLDER REVISIONS CONSOLIDATED AND FILED | | | | | | | PROPRIETARY AND CONFIDENTIAL THE INFORMATION CONTAINED IN THIS DRAWING IS THE SOLE PROPERTY OF SOUTH-TEK SYSTEMS. ANY REPRODUCTION IN PART OR AS A WHOLE WITHOUT THE WRITTEN PERMISSION OF SOUTH-TEK SYSTEMS IS PROHIBITED. | | ANGLES | X. | .X | .XX | .XXX | X/X<10' | X/X>10' | |
| | | | | | | | | | ±.5° | ±1 | ±.2 | ±.03 | ±.005 | ±1/16 | ±1/8 | |