

MEPNN Supplier Scouting Opportunity Synopsis

Section 1: General Information

Scouting Number	2025-375
Item to be Scouted	Reduced Pressure Detector Check Assembly
Days to be scouted	30
Response Due By	01/02/2026
Description	Need approximately 25 Reduced Pressure Detector Check Assemblies for use in potable municipal water system to prevent cross-contamination. Need by May 2026

Section 2: Technical Information

Type of supplier being sought	Manufacturer
Reason	BABA
Describe the manufacturing processes (elaborate to provide as much detail as possible)	Reduced Pressure Detector Check Assemblies (RPDA) are produced using a combination of casting, machining, forging, welding, coating, and assembly processes.
Provide dimensions / size / tolerances / performance specifications for the item	Designed for no more than 175 PSI, all bare iron and steel must be coated, must meet University of Southern California Foundation for Cross-Connection Control and Hydraulic Research (USC standards), must include a factory installed bypass meter and reduced pressure principal assembly that reads in cubic feet per second, and must be Buy America Act compliant. Please see attached document for additional information.
List required materials needed to make the product, including materials of product components	May include but is not limited to bronze, ductile iron, stainless steel, epoxy resin and/or elastomers.
Are there applicable certification requirements?	Yes
Details	University of Southern California Foundation for Cross-Connection Control and Hydraulic Research (USC standards) and Buy American Domestic content requirements
Are there applicable regulations?	No
Are there any other standards, requirements, etc.?	Yes
Details	Must meet University of Southern California Foundation for Cross-Connection Control and Hydraulic Research and Buy American Domestic content requirements. https://fccchr.usc.edu/list.html
Additional Technical Comments	

Section 4: Business Information

Estimated potential business volume	25 total
Estimated target price / unit cost information (if unavailable explain)	Best available, as this is related to BABA, acceptable pricing is to be determined in negotiation.
When is it needed by?	May 2026
Describe packaging requirements	Best available. Delivered undamaged. Specifics discussed in negotiation.
Where will this item be shipped?	Riverside, California

Additional Comments

Is there other information you would like to include?

Agency providing funds: US EPA.

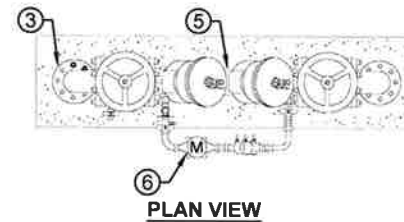
Point of Contact: Sam Niederberger. Niederberger.Sam@epa.gov

MATERIALS:

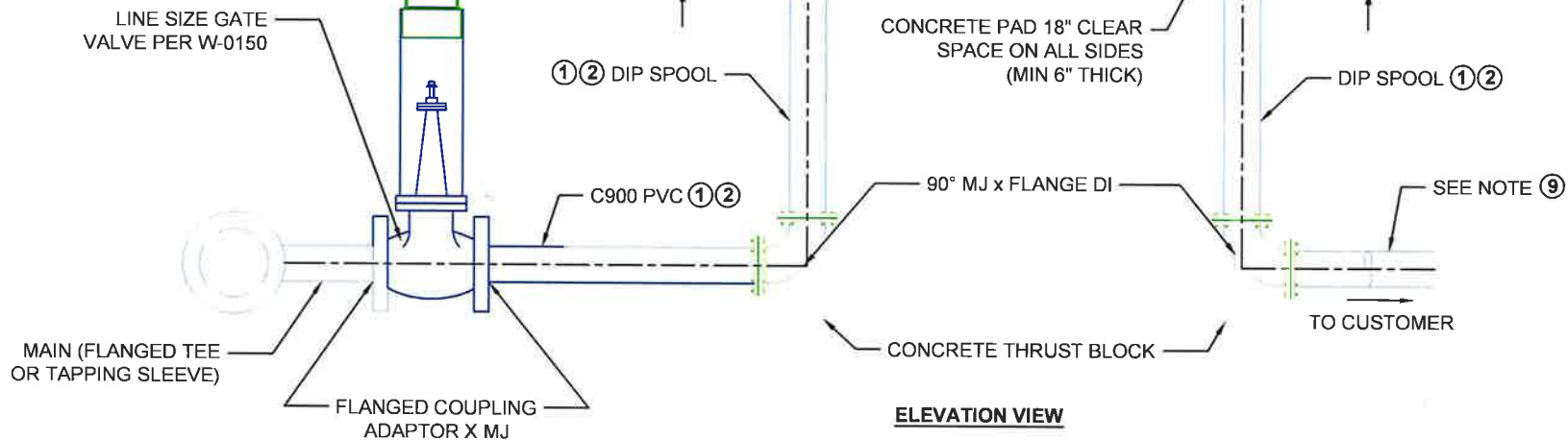
- ALL PIPES AND FITTINGS SHALL BE DESIGNED FOR 175 P.S.I. (WMWD SYSTEM WORKING PRESSURE).
- ALL BARE STEEL OR IRON SHALL BE COATED AND PROTECTED AS PER SPECIFICATIONS PRIOR TO PLACING BACKFILL.
- LOCATION OF BACKFLOW ASSEMBLY TO BE APPROVED BY LOCAL JURISDICTION PRIOR TO INSTALLATION.
- EASEMENT TO BE GRANTED TO WMWD FOR METER READING PURPOSES.
- DOUBLE CHECK DETECTOR ASSEMBLY BACKFLOW PREVENTER ASSEMBLY WITH $\frac{3}{4}$ " BYPASS METER APPROVED BY USC.
- FACTORY INSTALLED BYPASS METER ASSEMBLY COMPRISING OF APPROVED METER AND DOUBLE CHECK DETECTOR ASSEMBLY PER WMWD STANDARD SPECIFICATION METER TO BE USED FOR FIRE SYSTEMS ONLY. METER READS IN CUBIC FEET AND MODEL TO BE APPROVED BY WMWD.
- ADJUSTABLE PIPE SUPPORT FOR ASSEMBLIES 6-INCH DIAMETER AND LARGER PER W-1568.
- MIN 12" TO MAX 36" VERTICAL CLEARANCE MUST BE PROVIDED FROM BOTTOM OF ASSEMBLY TO TOP OF CONCRETE PAD.
- PIPELINE MATERIAL AFTER BACKFLOW ASSEMBLY TO BE APPROVED BY LOCAL JURISDICTION.

NOTES:

- SITE PLAN AND TYPE OF DOUBLE CHECK DETECTOR ASSEMBLY TO BE APPROVED BY WMWD PRIOR TO INSTALLATION.
- THE DOUBLE CHECK DETECTOR ASSEMBLY SHOULD BE INSTALLED AS CLOSE AS PRACTICAL TO THE SERVICE CONNECTION WITH NO OUTLET CONNECTIONS OR TEES.
- ALL WELDS TO BE FULL WELD, DOUBLE-PASS.
- TRIPAK BLUE 2000 BOLTS REQUIRED. ALL FLANGES BOLTED IN THE FIELD.
- ALL DUCTILE IRON (DI) JOINTS SHALL BE RESTRAINED.
- RETAINING WALLS MAY BE REQUESTED DEPENDING ON SLOPE OR LOCATION FOR PROTECTION PURPOSES.
- FIRE SYSTEM USING ONSITE PUMP IS REQUIRED TO INSTALL BYPASS METERING LOOP AND INSERTION FLOW METER FOR EACH PUMP.



PLAN VIEW



ELEVATION VIEW



REVISIONS					
NO.	DATE	INITIAL	DESCRIPTION	APP'D	DATE

APPROVED DATE: _____

Paula Blythe

DIRECTOR OF OPERATIONS

APPROVED DATE: _____

Derek Kawaii

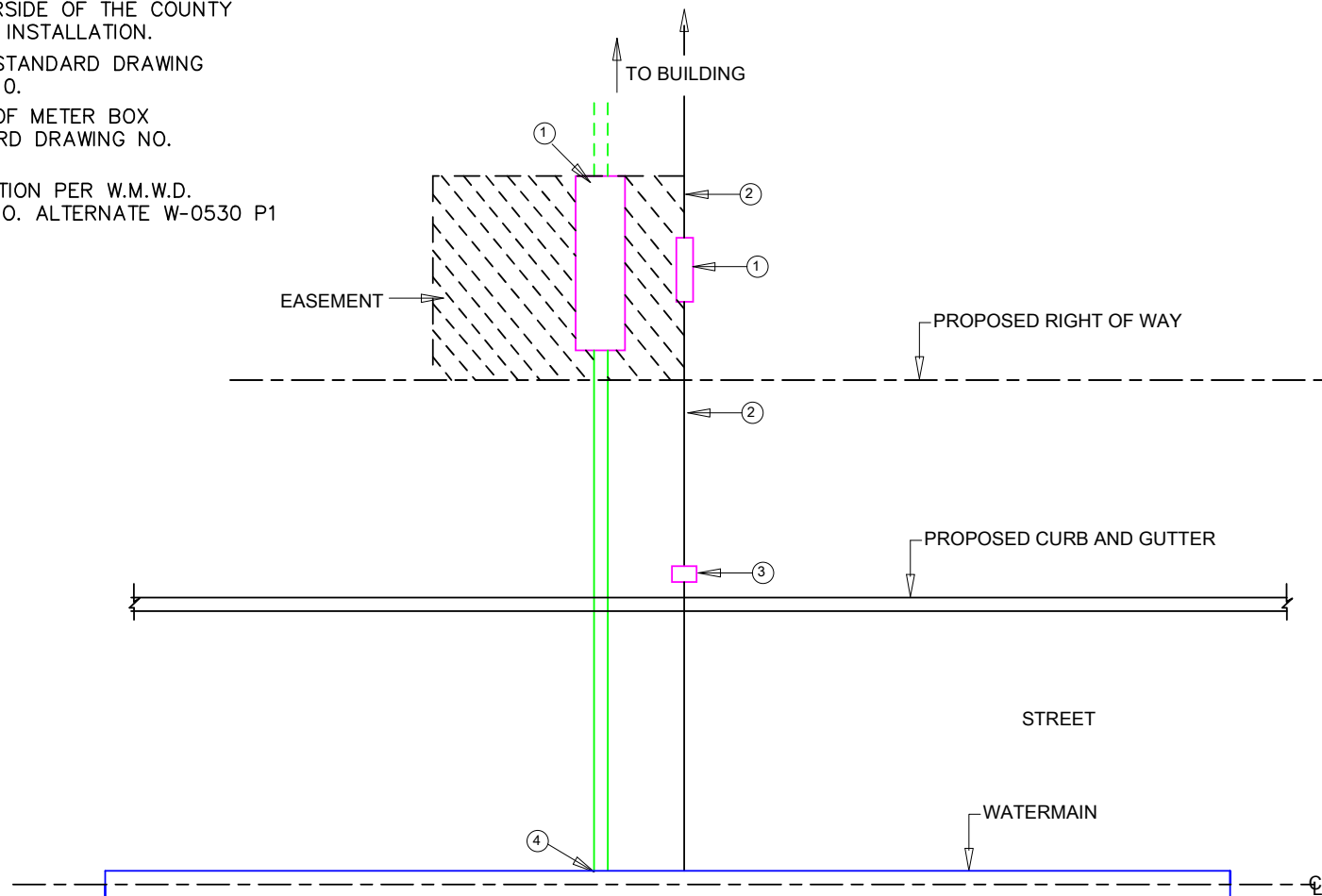
DIRECTOR OF ENGINEERING

STANDARD DRAWING
DOUBLE CHECK DETECTOR ASSEMBLY
BACKFLOW PREVENTER 4", 6", 8", OR 12"

STD. DWG. NO.

W-0530

- ① SIZE AND TYPE OF R.P. BACKFLOW DEVICE TO BE APPROVED BY W.M.W.D. BEFORE INSTALLATION. LOCATION TO BE APPROVED BY THE CITY OF RIVERSIDE OF THE COUNTY OF RIVERSIDE BEFORE INSTALLATION.
- ② PIPING PER W.M.W.D. STANDARD DRAWING NO. W-0520 OR W-0110.
- ③ LOCATION AND TYPE OF METER BOX PER W.M.W.D. STANDARD DRAWING NO. W-0110.
- ④ FIRE SERVICE CONNECTION PER W.M.W.D. STANDARD DRAWING NO. ALTERNATE W-0530 P1



DIRECTOR OF ENGINEERING

STD. DWG.
NO.

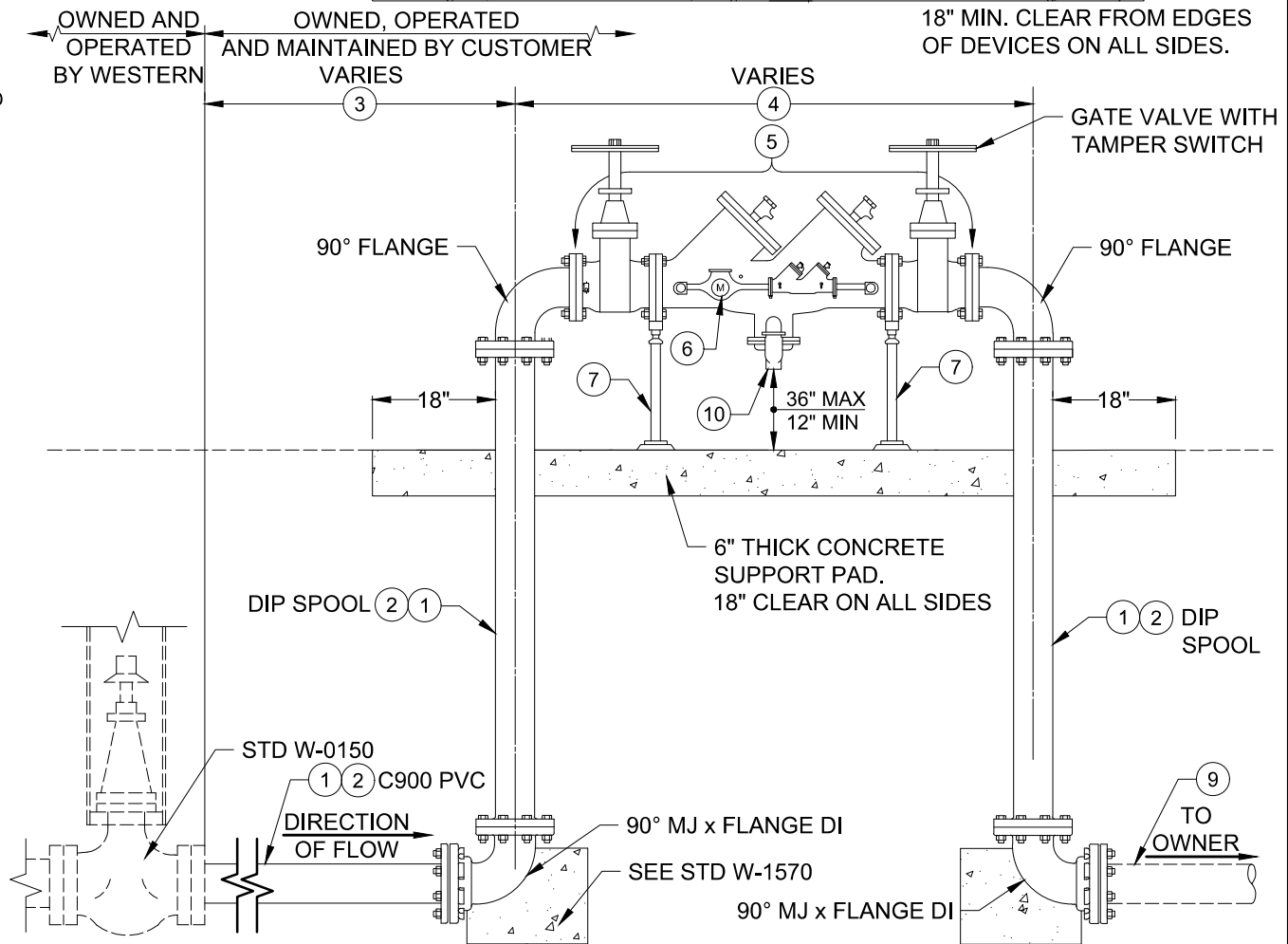
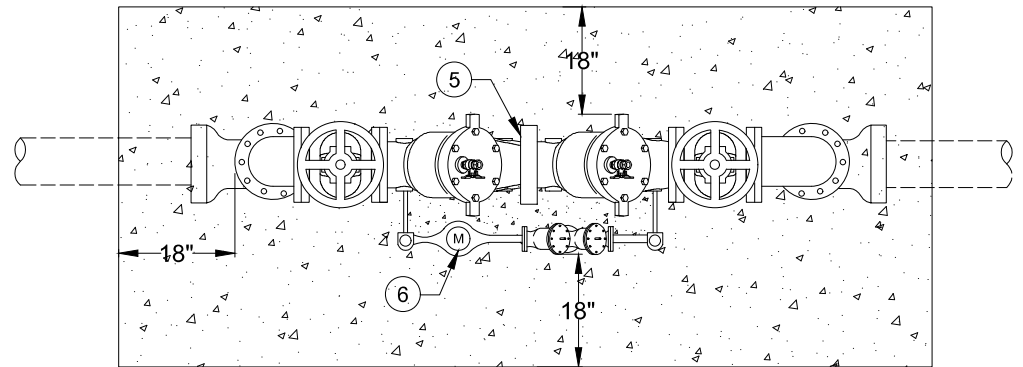
W-0530p2

MATERIAL NOTES

- 1 ALL PIPES AND FITTINGS SHALL BE DESIGNED FOR MORE THAN 175 P.S.I (COLD) WATER WORKING PRESSURE.
- 2 ALL BARE STEEL OR IRON SHALL BE COATED AND PROTECTED AS PER SPECIFICATIONS PRIOR TO PACING BACKFILL.
- 3 LOCATION OF REDUCED BACKFLOW DETECTOR ASSEMBLY (RPDA) DEVICE TO BE APPROVED BY LOCAL JURISDICTION PRIOR TO INSTALLATION.
- 4 EASEMENT TO BE GRANTED TO WMWD FOR METER READING PURPOSES.
- 5 REDUCED PRESSURE BACK FLOW PREVENTER ASSEMBLY WITH BYPASS METER APPROVED BY USC.
- 6 FACTORY INSTALLED BYPASS METER ASSEMBLY COMPRISING OF APPROVED METER AND REDUCED PRESSURE PRINCIPAL ASSEMBLY PER WMWD STANDARD SPECIFICATION METER TO BE USED FOR FIRE SYSTEMS ONLY. METER READS IN CUBIC FEET AND MODEL TO BE APPROVED BY WMWD.
- 7 ADJUSTABLE PIPE SUPPORT SECURED TO CONCRETE PAD FOR ASSEMBLIES 6-INCH DIAMETER AND LARGER PER W-1568.
- 8 MINIMUM 12-INCH TO MAX 36-INCH VERTICAL CLEARANCE MUST BE PROVIDED FROM BOTTOM OF RELIEF VALVE TO TOP OF CONCRETE PAD.
- 9 PIPELINE MATERIAL AFTER BACK FLOW DEVICE TO BE APPROVED BY LOCAL JURISDICTION.
- 10 RPDA RELIEF VALVE.

NOTES

1. SITE PLAN AND TYPE OF RPDA TO BE APPROVED BY WESTERN PRIOR TO INSTALLATION.
2. THE RPDA SHALL BE INSTALLED AS CLOSE AS PRACTICAL TO THE SERVICE CONNECTION WITH NO OUTLET CONNECTIONS OR TEE.
3. ALL WELDS TO BE FULL WELD, DOUBLE-PASS.
4. TRIPAK BLUE 2000 BOLTS REQUIRED ALL FLANGES BOLTED IN THE FIELD.
5. ALL DUCTILE IRON (DI) JOINTS SHALL BE RESTRAINED.
6. RETAINING WALLS MAY BE REQUESTED DEPENDING ON SLOPE OR LOCATION FRO PROTECTION PURPOSES.
7. FIRE SYSTEM USING ONSITE PUMP IS REQUIRED TO INSTALL BYPASS METERING LOOP AND INSERTION FLOW METER FOR EACH PUMP.
8. CUSTOMER SHALL SUPPLY AND INSTALL A USC APPROVED LEAD FREE COMPACT RPDA TO STATE REGULATIONS, APPLICABLE UNIFORM PLUMBING CODE AND SPECIFICATIONS OF WESTERN APPROVED MATERIAL LIST. SELECTED RPDA DEVICE NEEDS TO BE APPROVED BY WESTERN CROSS CONNECTION DEPARTMENT PRIOR TO INSTALLATION.
9. UPON INSTALLATION AND PRIOR TO WATER DELIVERY, THE RPDA SHALL BE INSPECTED, TESTED AND CERTIFIED BY A AWWA CERTIFIED BACK FLOW TESTER THAT IS LISTED ON THE WESTERN APPROVED BACK FLOW TESTER LIST. COMPLETED TEST REPORTS SHALL BE FORWARDED TO THE WESTERN CROSS CONNECTION CONTROL / BACK FLOW DEPARTMENT.



14205 MERIDIAN PARKWAY
RIVERSIDE, CA 92518

APPROVED DATE: 04/30/25

Paul Bayne

EXECUTIVE DIRECTOR OF OPERATIONS

APPROVED DATE: 04/30/25

Dave Kanab

DIRECTOR OF ENGINEERING

STANDARD DRAWING
REDUCED PRESSURE DETECTOR
ASSEMBLY BACKFLOW PREVENTOR
4" AND LARGER

STD. DWG.
NO.

W-0531

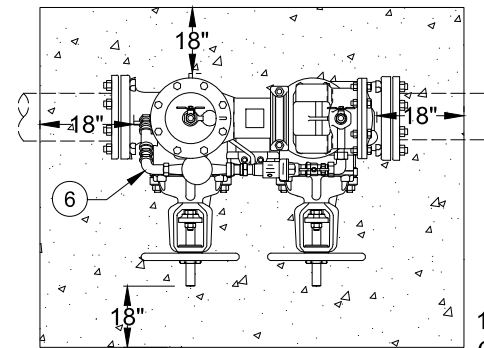
SHEET 1 OF 1

MATERIAL NOTES

- 1- ALL PIPES AND FITTINGS SHALL BE DESIGNED FOR MORE THAN 175 P.S.I (COLD) WATER WORKING PRESSURE.
- 2- ALL BARE STEEL OR IRON SHALL BE COATED AND PROTECTED AS PER SPECIFICATIONS PRIOR TO PACING BACKFILL.
- 3- LOCATION OF BACK FLOW ASSEMBLY DEVICE TO BE APPROVED BY LOCAL JURISDICTION PRIOR TO INSTALLATION.
- 4- EASEMENT TO BE GRANTED TO WESTERN FOR METER READING PURPOSES.
- 5- APPROVED N-PATTERN REDUCED PRESSURE BACK FLOW PREVENTER ASSEMBLY WITH RISING STEM RESILIENT WEDGE GATE VALVES, VALVES SHALL BE PROVIDED AS AN INTEGRAL PART OF BACK FLOW ASSEMBLY.
- 6- FACTORY INSTALLED BY-PASS METER ASSEMBLY COMPRISING OF APPROVED METER AND REDUCED PRESSURE PRINCIPAL ASSEMBLY PER WESTERN STANDARD SPECIFICATION METER TO BE USED FOR FIRE SYSTEMS ONLY. METER READS IN CUBIC FEET AND MODEL TO BE APPROVED BY WESTERN.
- 7- 4" x 3" DI REDUCER, F.E. x F.E. FOR 3" DOUBLE CHECK BACK FLOW ASSEMBLY.
- 8- MINIMUM 12-INCH TO MAX 36-INCH VERTICAL CLEARANCE MUST BE PROVIDED FROM BOTTOM OF RELIEF VALVE TO TOP OF CONCRETE PAD.
- 9- PIPELINE MATERIAL AFTER BACK FLOW DEVICE TO BE APPROVED BY LOCAL JURISDICTION.

NOTES

1. SITE PLAN AND TYPE OF REDUCED PRESSURE DETECTOR ASSEMBLY TO BE APPROVED BY WESTERN PRIOR TO INSTALLATION.
2. THE REDUCED PRESSURE DETECTOR ASSEMBLY SHOULD BE INSTALLED AS CLOSE AS PRACTICAL TO THE SERVICE CONNECTION WITH NO OUTLET CONNECTIONS OR TEE.
3. ALL WELDS TO BE FULL WELD, DOUBLE-PASS.
4. TRIPAK BLUE 2000 BOLTS REQUIRED ALL FLANGES BOLTED IN THE FIELD.
5. ALL DUCTILE IRON (DI) JOINTS SHALL BE RESTRAINED.
6. RETAINING WALLS MAY BE REQUESTED DEPENDING ON SLOPE OR LOCATION FRO PROTECTION PURPOSES.
7. FIRE SYSTEM USING ONSITE PUMP IS REQUIRED TO INSTALL BYPASS METERING LOOP AND INSERTION FLOW METER FOR EACH PUMP.
8. CUSTOMER SHALL SUPPLY AND INSTALL A USC APPROVED LEAD FREE COMPACT REDUCED PRESSURE DETECTOR ASSEMBLY (RPDA) TO STATE REGULATIONS, APPLICABLE UNIFORM PLUMBING CODE AND SPECIFICATIONS OF WESTERN APPROVED MATERIAL LIST. SELECTED BACK FLOW DEVICE NEEDS TO BE APPROVED BY WESTERN CROSS CONNECTION DEPARTMENT PRIOR TO INSTALLATION.
9. UPON INSTALLATION AND PRIOR TO WATER DELIVERY, THE RPDA SHALL BE INSPECTED , TESTED AND CERTIFIED BY AWWA CERTIFIED BACK FLOW TESTER THAT IS LISTED ON THE WESTERN APPROVED BACK FLOW TESTER LIST. COMPLETED TEST REPORTS SHALL BE FORWARDED TO THE WESTERN CROSS CONNECTION CONTROL / BACK FLOW DEPARTMENT.



18" MIN. CLEAR FROM EDGES
OF DEVICES ON ALL SIDES.

